

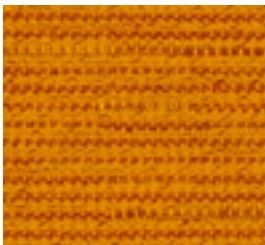


High Performance Textiles

At Herman Miller, we work for a better world around you by designing furnishings that improve the human experience wherever people work, heal, learn, and live. Our new high performance textiles solve the problems our customers face in office and healthcare environments: cleanability, microbial and bacterial resistance, moisture resistance, and breathability.

Our growing collection of high performance textiles exceed ACT standards for heavy duty use. They each have their own performance attributes that offer various benefits for healthcare environments, cafeterias, collaborative spaces, and other high traffic areas.

Striving for a better world impacts how we develop product. Since the necessity for fluorochemical solutions to enable stain and moisture resistance is an ongoing challenge with high performance textiles, we have identified three technologies that offer the best environmentally optimized solutions available today. These technologies were employed in the design and engineering of Jump Rope, Quilty, Checkmate, Spools, and Bingo textiles.



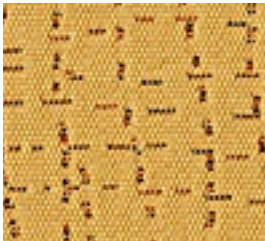
Jump Rope

Jump Rope

13 colors
Seating, Price Category 4

100% polyester with YES Essentials
Stain repel and release, antimicrobial, moisture barrier

Jump Rope is our latest offering to exceed the the Association for Contract Textiles (ACT) standard for heavy-duty use. Jump Rope is engineered with YES Essentials, a superior finishing technology designed to facilitate cleaning, inhibit microbial growth and provide a barrier to moisture and liquids. Unlike vinyl textiles often used for high-traffic areas, Jump Rope's bouclé construction provides a luxurious feel while remaining breathable.



Quilty

Quilty

13 colors
Seating, Systems & Furniture, Price Category 4
MBDC Silver Certified, SCS Indoor Advantage Gold

100% antimony-free polyester with GreenShield
Stain repel and release, antimicrobial

Herman Miller is the first company to introduce GreenShield, a nanotechnology finish. Nanotechnology is engineering on the molecular level and in this case mimics the surface of the lotus leaf with a 'micro-roughness.' Undetectable to the human touch, GreenShield induces water and oil to roll off the surface of Quilty and never penetrate the fabric.

GreenShield's nanoparticles use one-sixth the chemistry required of other surface treatments. GreenShield is the first finish certified by SCS (Scientific Certification Systems) as a low fluorocarbon treatment.



Checkmate

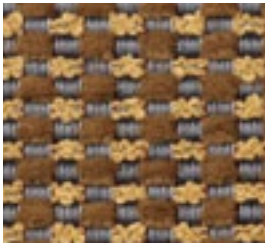
Checkmate

13 colors
Seating, Price Category 3

51% recycled polyester, 49% polyester with YES Essentials
Stain repel and release, antimicrobial, moisture barrier

YES Essentials was developed for the automotive industry and can be found in recent Chrysler, Jeep, and Dodge vehicles. YES Essentials uses a silver-ion based antimicrobial additive. Silver is a powerful antimicrobial metal ion that interferes with microbial cell growth. We have identified silver-ion based antimicrobial technology as a preferred high performance technology.

Checkmate's performance is enhanced with the addition of a moisture barrier applied to the back of the fabric. This renders it impermeable; yet unlike vinyl textiles often used in high traffic areas, Checkmate remains breathable.



Spools

Spools

13 colors
Seating, Price Category 4
MBDC Silver Certified, SCS Indoor Advantage Gold

51% recycled polyester, 49% polyester with Crypton Green
Stain repel and release, antimicrobial, moisture barrier

Spools employs Crypton Green, an environmentally optimized silver-ion based antimicrobial technology. Crypton has been pioneering in the development of high performance finishes for fifteen years. Crypton Green has the added benefit of a special coating that provides a moisture barrier feature while remaining breathable.



Bingo

Bingo

29 colors
Seating, Price Category 4

100% polyurethane with antimicrobial finish
Stain repel and release, antimicrobial, moisture barrier

We developed Bingo to offer an environmentally better alternative to vinyl without sacrificing performance. Bingo utilizes polyurethane, a plastic with superior environmental characteristics compared to PVC (polyvinyl chloride). Bingo is designed to resist liquids and has the added benefit of easy clean-up. Unlike vinyl, Bingo is breathable.

	5100 Jump Rope	6500 Quility	5600 Checkmate	8Y00 Spools	7Y00 Bingo
Content	100% polyester	100% antimony-free polyester	51% recycled polyester, 49% polyester	51% recycled polyester, 49% polyester	100% polyurethane
Finish	YES Essentials	GreenShield	YES Essentials	Crypton Green	Antimicrobial
Stain repel and release	Yes	Yes	Yes	Yes	Yes
Antimicrobial	Yes	Yes	Yes	Yes	Yes
Moisture barrier	Yes	No	Yes	Yes	Yes

MBDC Certification

MBDC developed Cradle to Cradle Certification as a means to measure environmentally-intelligent design based on a broad range of factors. Factors measured include material reutilization, energy efficiency, and water use and handling in manufacturing.

SCS Indoor Advantage Certification

Scientific Certification Systems is a leading third party provider of certification, auditing, and testing services. Basis for rating is Chronic Reference Exposure Levels (CRELs). Qualification for the Indoor Advantage Gold certification requires that products not exceed a specified CREL measure.

Stain repel and release

Stain repel and release finishes help to prevent liquids from penetrating the textile and enhance cleanability.

Antimicrobial

Antimicrobial finishes help to prevent the spread of bacteria and other dangerous microbes.

Moisture barrier

A moisture barrier is a finish applied as a film or coating to the back of a textile. Moisture barriers prevent penetration of liquids, enhance cleanability, and prolong furniture life.

© The Herman Miller logo is a registered trademark of Herman Miller, Inc.
© Crypton is a registered trademark of Crypton, Inc., YES Essentials is a registered trademark of Milliken & Company, and Chrysler, Dodge and Jeep are registered trademarks of Chrysler, LLC
GreenShield is a trademark of G3 Technology Innovations, LLC
Cradle to Cradle Certified is a certification mark of MBDC
© 2010 Herman Miller, Inc.