



Brisa Distressed

Ultrafabrics

Composition:

100% Polyurethane Surface

65% Polyester, 35% Rayon backing

Application:

Width: 137cm

Weight: 315g/square metre

Price band 6

Standards:

Abrasion Resistance: ASTM D4157 / 300,000 Double Rubs (Wyzenbeek). BS 2543 / 160,000 Rubs (Martindale)

Flammability: • ASTM E84 (Adhered) - Class A. CA TB 117-2013 - Pass •

FMVSS 302 & 95/28 Annex IV – Pass. NFPA 260 - Class 1. UFAC - Class 1

Light Fastness: AATCC 16.3, 200 Hours, Grade 4-5

Fastness to Rubbing: AATCC 8, Class 5 Wet & Dry

Colour Matching: Batch to batch variations in shade may occur within commercial tolerances.

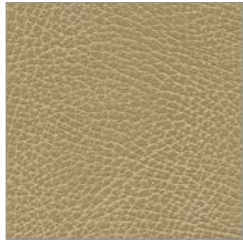
Maintenance: Vacuum regularly. Wipe clean with a damp cloth.



Prairie
70504 535-4512



Pelt
70502 535-3870



Buckskin
70503 535-3134



Coyote
70514 535-3274



Shield
70505 535-3273



Manilla
70506 535-3021



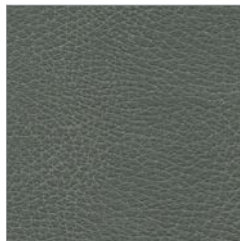
Koala
70507 535-3271



Railroad
70508 535-3232



Steerhide
70520 535-3974

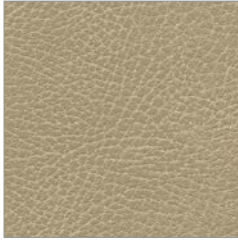


Iron
70521 535-5679



Stormy
70522 535-5773

Brisa Distressed



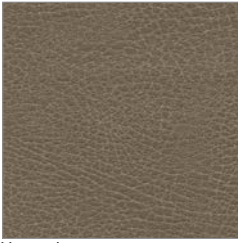
Desert Tan 535-3340
70515



Navajo Ivory 535-3480
70516



Muslin 535-3869
70517



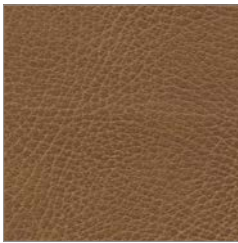
Moccasin 535-3871
70518



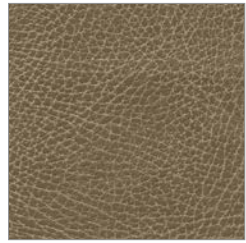
Lasso 535-3972
70519



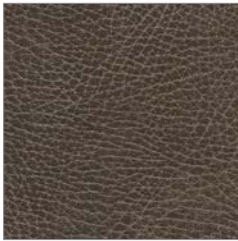
Chamois 535-3024
70510



Waylan 535-3980
70509



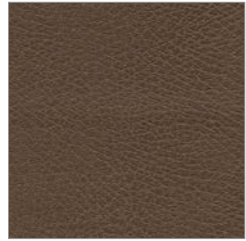
Saddle 535-3137
70511



Brison 535-3201
70512



French Roast 535-3231
70513



Bridle 535-3976
70501