

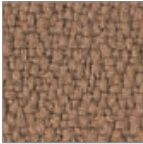
HermanMiller

Celle® colour choices



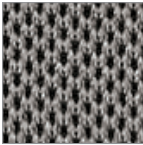
Seat upholstery

Price Band 0



Phoenix
70

Price Band 2



Unity/Nexus
1D



Rhythm
30

Cellular seat and back finishes



Graphite
G1

Armpad finishes



Black
BK

Frame/base finishes



Graphite
G1

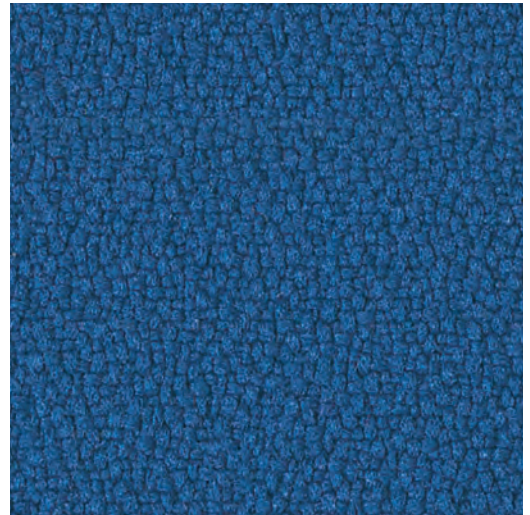
Full colour palette on following pages.

Phoenix by Camira

Composition:
polyester 100%

Application:
Width: 140cm +/- 2% Usable
Weight: 285g/m² +/- 5% (400g/linear metre +/- 5%)
Price Band 0

Standards:
Abrasion Resistance: 100,000 Martindale cycles
Flammability: BS EN 1021-1:2006, BS EN 1021-2:2006, BS EN 7176 :2007
Light Fastness: 6 (ISO 105-B02: 1999)
Fastness to Rubbing: Wet: 4 Dry: 4 (ISO 105 – X12:2002)



Curacao
70005

YP005



Havana
70009

YP009



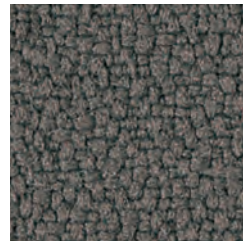
Sombrero
70046

YP046



Paseo
70019

YP019



Blizzard
70081

YP081



Sandstorm
70107

YP107



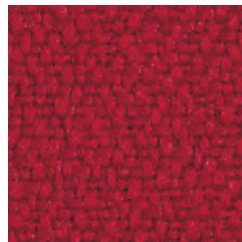
Guyana
70051

YP051



Belize
70105

YP105



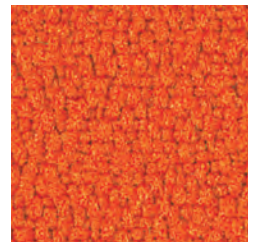
Calypso
70106

YP106



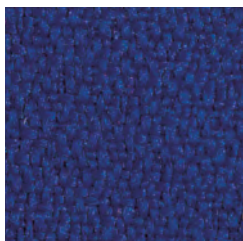
Lobster
70076

YP076



Olympic
70113

YP113



Ocean
70100

YP100



Costa
70026

YP026



Tarot
70084

YP084



Scuba
70082

YP109



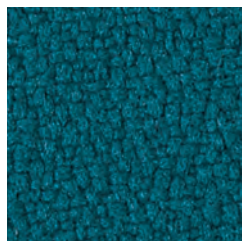
Bluebell
70097

YP097



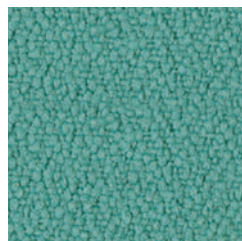
Apple
70108

YP108



Montserrat
70011

YP011



Campeche
70112

YP112



Taboo
70045

YP045



Solano
70110

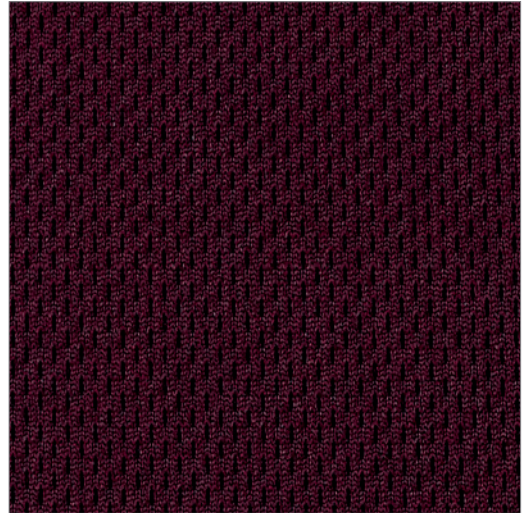
YP110

Rhythm by Herman Miller

Composition:
Polyester 100%

Application:
Width: 54" Non-Directional
Price Band 2

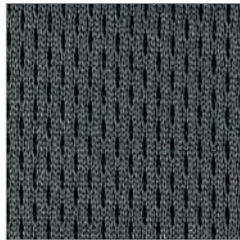
Standards:
Flammability: CA TB 117, NFPA 260
Light Fastness: Grade 4, 40 hours
Abrasion: Wyzenbeek, 200,000 double rubs



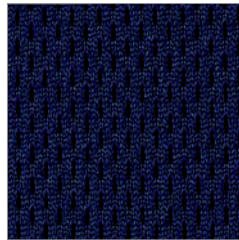
Mulberry
3011



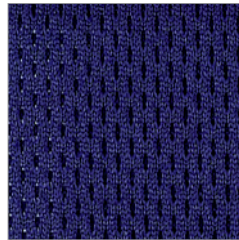
Black
3014



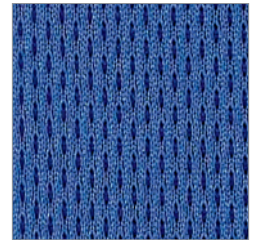
Charcoal
3015



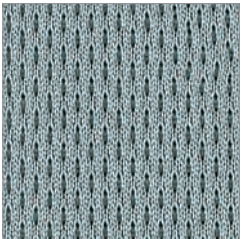
Twilight
3007



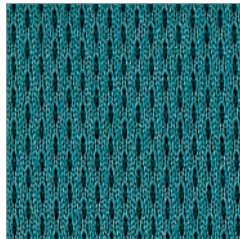
Iris
3006



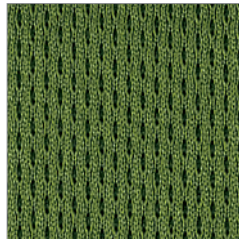
Berry Blue
3005



Bayou
3004



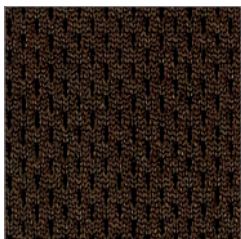
Peacock
3003



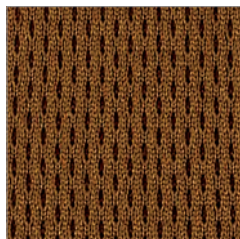
Green Apple
3002



Kiwi Green
3001



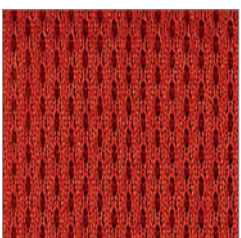
Mink
3013



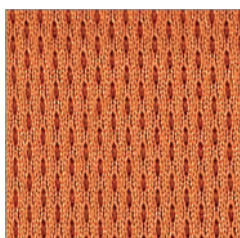
Molasses
3010



Khaki
3012



Poppy
3009



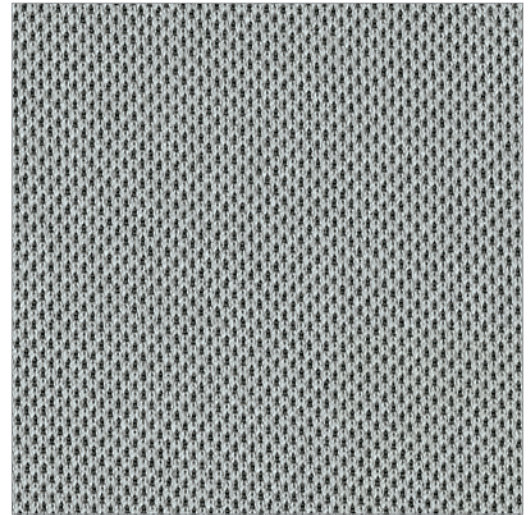
Pumpkin
3008

Unity/Nexus by Camira

Composition:
Polyester 100%

Application:
Width 170cm +/- 2% Usable
Weight: 300g/m² +/- 5% (530g/linear metre +/- 5%)
price Band 2

Standards:
BS 2543: 1995/2004
Flammability: BS 476 part 7 class 1,
Light Fastness: 5 (ISO 105-B02: 1999)
Fastness to Rubbing: Wet: 4 Dry: 4 (ISO 105 – X12:2002)



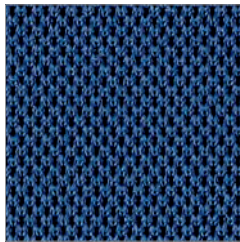
Storm
ID07

UNY07



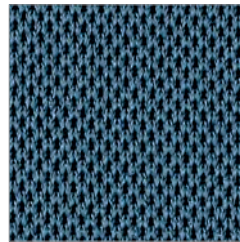
Oceanic
ID15

UNY15



Pacific
ID03

UNY03



Denim
ID08

UNY08



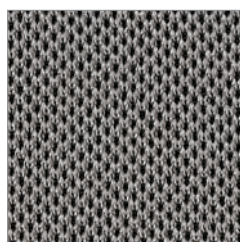
Black
ID13

UNY13



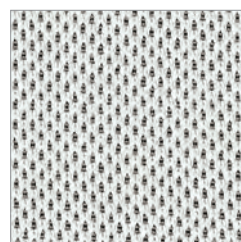
Graphite
ID11

UNY11



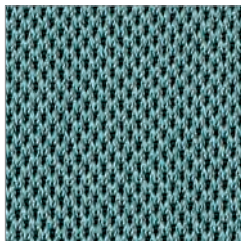
Pewter
ID01

UNY01



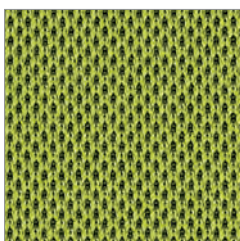
Chalk
ID12

UNY12



Petrol
ID10

UNY10



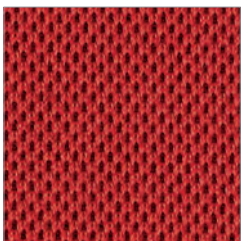
Kiwi
ID05

UNY05



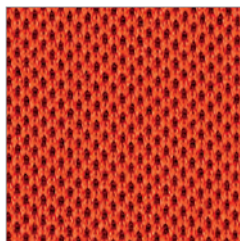
Limestone
ID02

UNY02



Russian
ID16


UNY16



Berry
ID04

UNY04

For more information, please visit hermanmiller.com or call +44 1225 794000

Colour samples are limited by the printing process and are indicative only.
© Herman Miller and  are registered trade marks of Herman Miller, Inc.
©2020 Herman Miller Ltd, UK. All rights reserved.