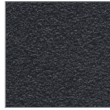


HermanMiller

Stem colour choices



Structure finishes



Thorium Grey
71



Metallic Silver
MS

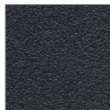


Soft White
LU



Chalk White
X1

Steel cladding finishes



Thorium Grey
71



Metallic Silver
MS



Berry
72



Kiwi
73



Sky
74



Soft White
LU



Chalk White
X1

Back painted glass door and top finishes



Black
BDB

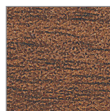


White
BDC

Melamine door and top finishes



Charcoal Ash
I4



Natural Walnut
RY



Smoked Cherry
I3



Havana Cherry
0C



Natural Beech
RZ



Napoli Oak
0B



Light Ash
I2



Maple
A8



Folkstone Grey
8Q



Soft White
LU



Chalk White
X1

**Veneer
door and top
finishes**



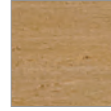
Walnut on Ash
EV



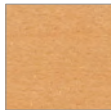
Walnut open grain
OUG



Oak open grain
OKG



Oak on Ash
EU



Maple open grain
Z5G



Clear on Ash
ET

**Acrylic door
finishes**



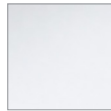
Glacier Green frosted
LFA



Chilli Red frosted
CFA



Stone Grey frosted
SFA

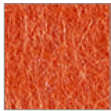


White frosted
WFA

**Acoustic liners
EchoPanel**



Lettuce
Z1J04



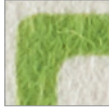
Mandarin
Z1J01



Off White
Z1J03

Backpanel upholstery

Price Band 0



EchoPanel
Mura Quattro
Z1P

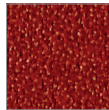
Price Band 1



Cara
4B

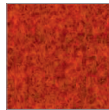


Lucia
7V

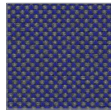


Resonance
5T

Price Band 2



Blazer Lite
Z1C



Field
1FD

Price Band 3



Hero
ZH1

Price Band 4



Messenger 4
84

For more information, please visit hermanmiller.com or call +44 (0)845 226 7201.