



Logic Reach™

Your people work everywhere. Now your power and data do, too. Logic Reach is a power distribution system that's as versatile as your people are, powering all the places and ways they work throughout an open office. With just three components, it connects furnishings to power and data in the shortest way possible—a straight line.

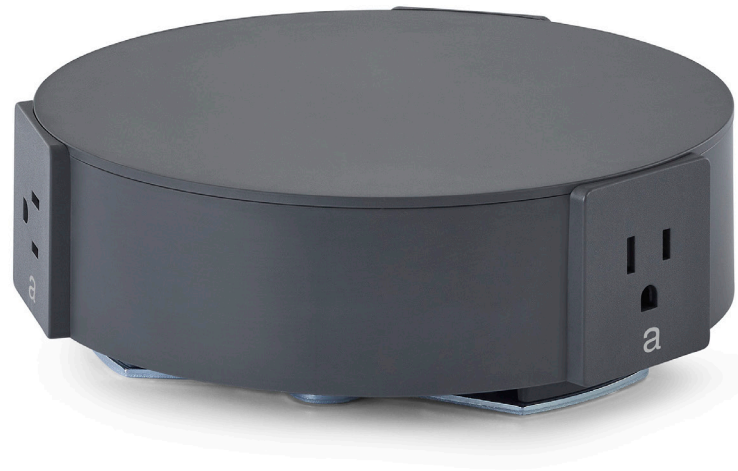
Benefits

- Seamlessly connects islands of furniture in an open office
- Smart, efficient design means components blend into any setting, making the whole system practically invisible
- Simple set-up can be completed overnight—and it's just as easy to reconfigure as it is to place

Warranty

5-year, 3-shift

hermanmiller.com/logic-reach



Key Features



- 1. Start**
 The Start taps into an existing power grid—in either architectural or movable, sub-architectural walls, and systems, like Canvas Office Landscape and Overlay.
- 2. Under-Carpet Tracks**
 Power and data can be transferred to settings across the floorplate through the Under-Carpet Tracks.
- 3. Electrical Hub**
 The Electrical Hub lies inconspicuously under or near furniture to provide power and data to furnishings and settings.

Specs

Wall Start
 Internal Wall Connection
 External Wall Connection

System Start
 Canvas Channel
 Canvas Wall
 Canvas Dock
 Canvas Vista
 Overlay

Under-Carpet Tracks
 Flat Data Track
 Round Data Track

Electrical Hub
 3 AC outlets

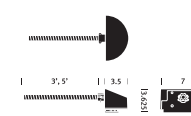
Certification
 20 amp Class A GFCI in US
 15 amp Class A GFCI in Canada

Data Cord Capacity
 Flat Data Track: 2
 Round Data Track: 8

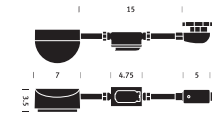
For additional details please refer to the price book.

Statement of Line

Starts



Wall Start

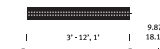


System Start

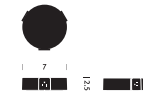


Floor Start

Under-Carpet Tracks



Electrical Hub



For the full statement of line please refer to the [price book](#).

Materials

[Click here](#) to view the complete textile and materials offering for Logic Reach.

Sustainability

[Click here](#) to see how Logic Reach meets your environmental goals.

3D Models

[View model library](#)