

# HermanMiller

## The Collection

### Eames® Square, Round, and Mobile Table Assembly

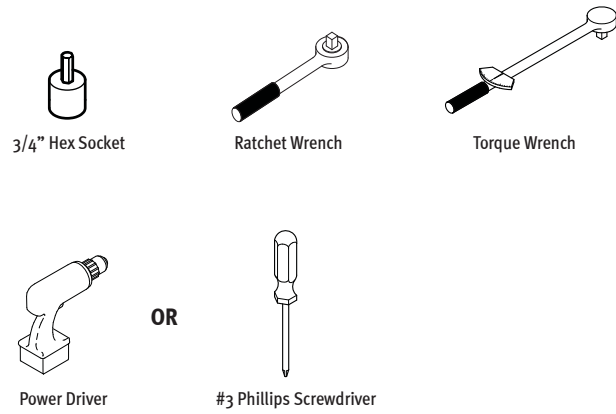


## How to assemble your table.

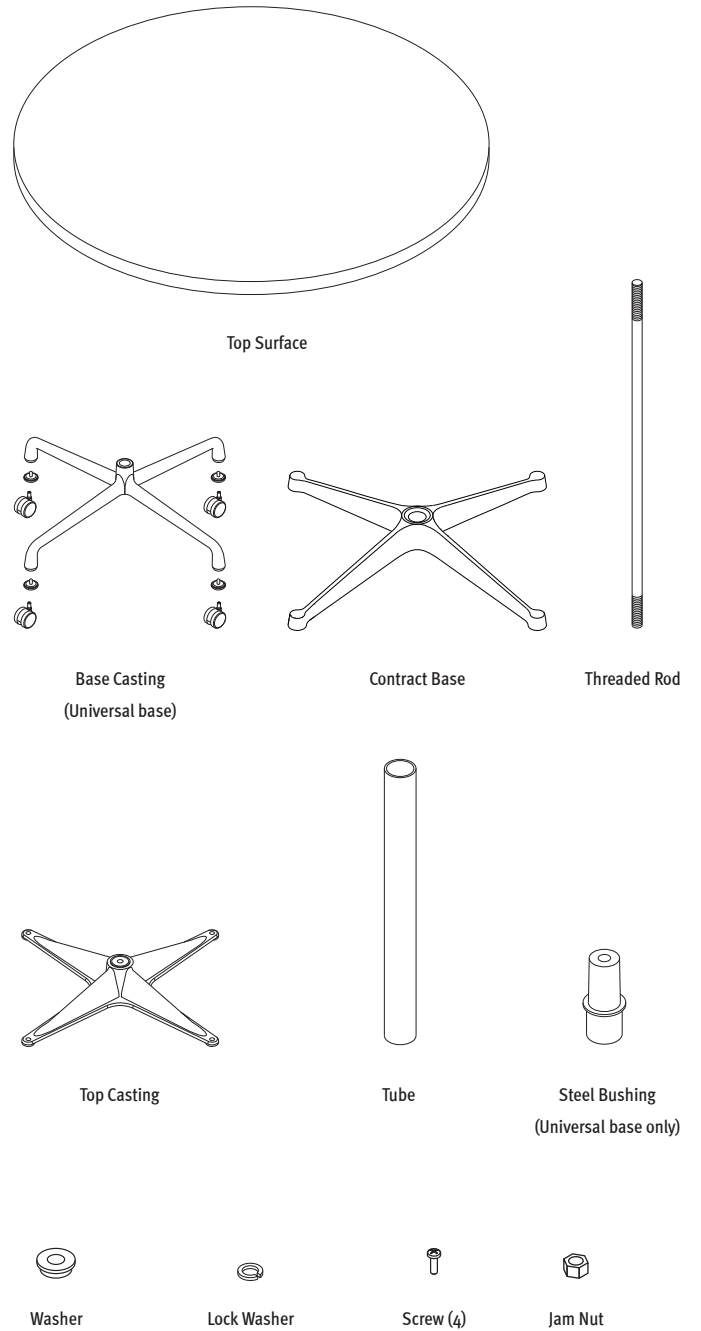
For more information about our products and services or to see a list of dealers, please visit us at [hermanmiller.com](http://hermanmiller.com) or call (800) 851 1196.

© 2013 Herman Miller, Inc., Zeeland, Michigan Printed in U.S.A. Part No. 108445 - L.  
 © Eames are among the registered trademarks of Herman Miller, Inc.

### Tools Required



### Parts Included

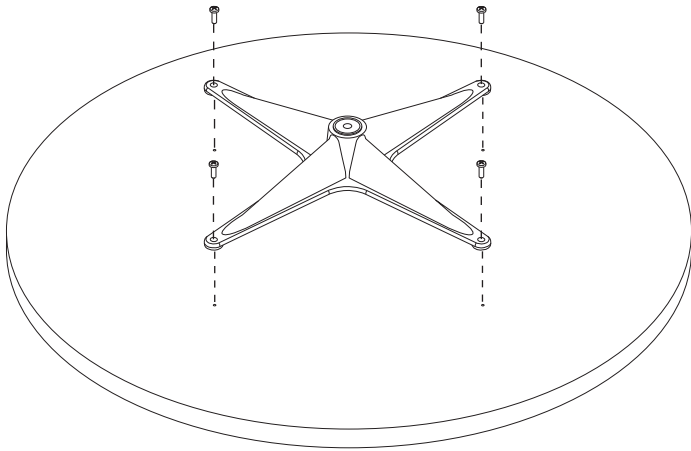


## Step 1

**1.1**  
Invert table top on a clean, Padded surface.

**1.2**  
Align top casting on table top.

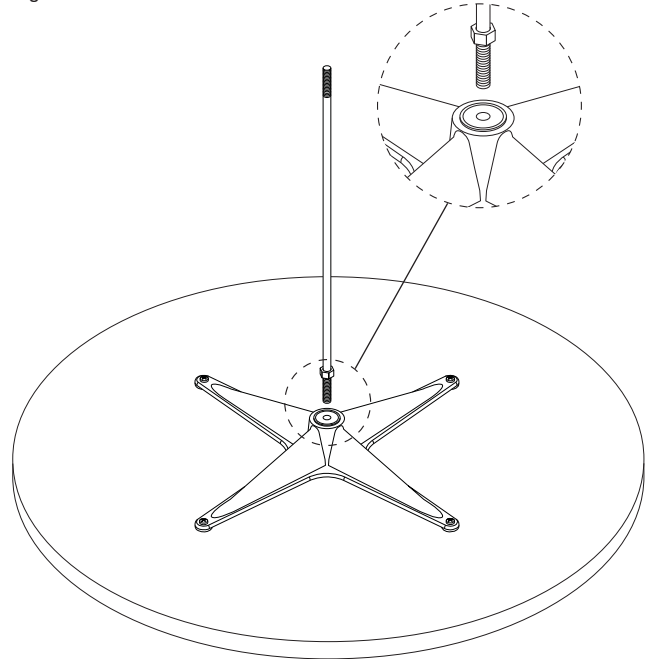
**1.3**  
Insert (4) screws and tighten..



## Step 2

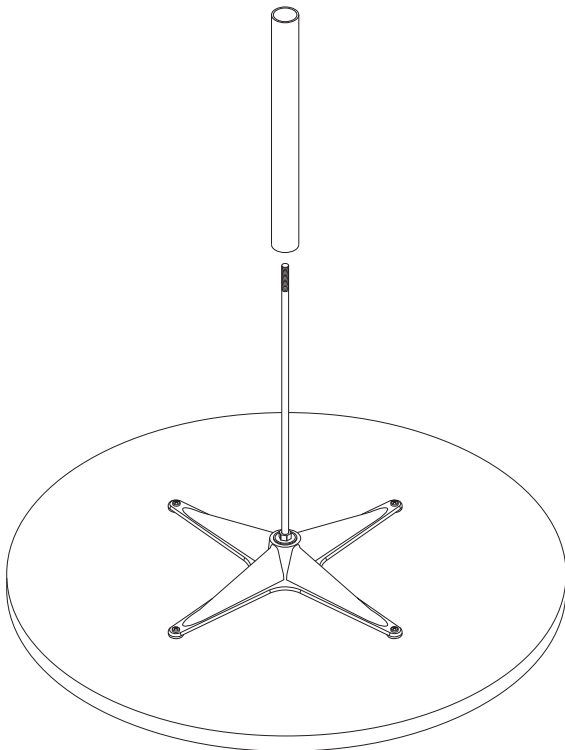
**2.1**  
Thread jam nut completely onto one end of threaded rod until jam nut will not turn.

**2.2**  
Insert rod, jam nut down, and thread completely into top casting. Tighten jam nut against top casting.



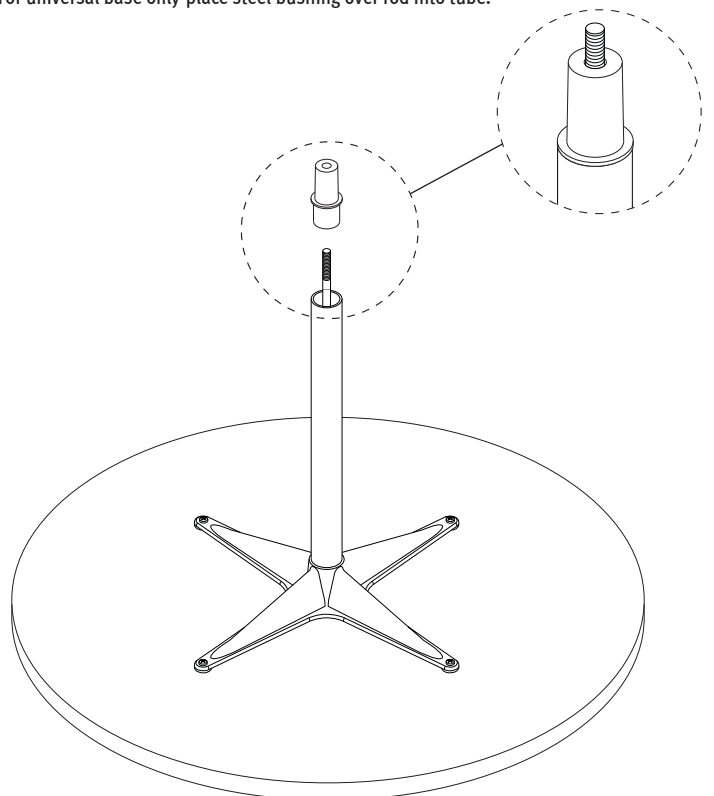
## Step 3

**3.1**  
Place tube over rod onto top casting.



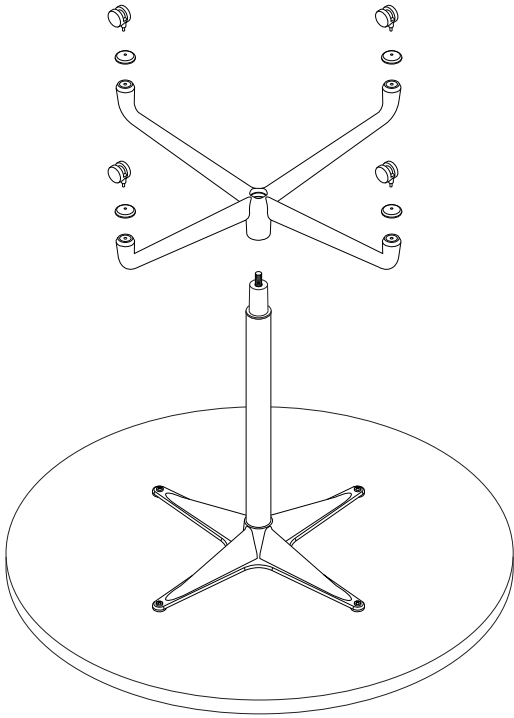
## Step 4

**4.1**  
For universal base only-place steel bushing over rod into tube.



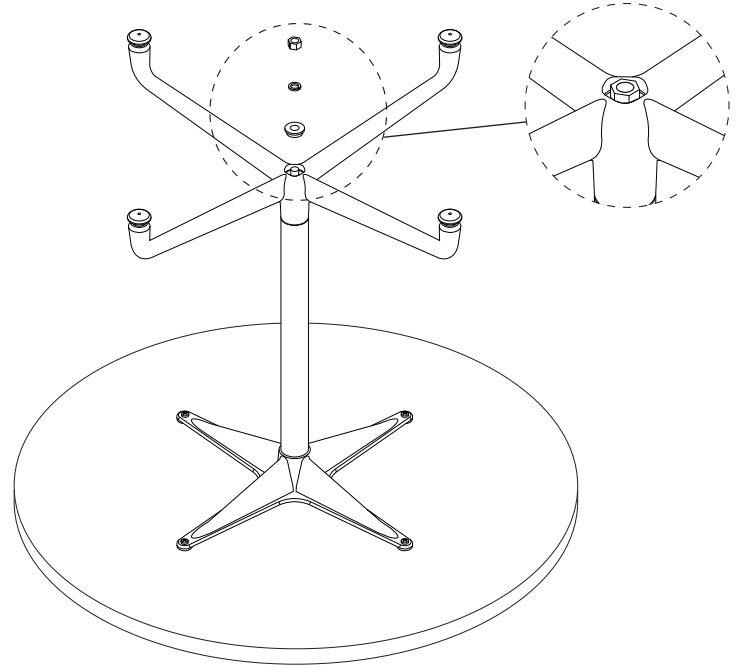
### Step 5

**5.1**  
Invert table base casting, casters/glides up, and place over tube, making sure that base casting legs are aligned approximately with top casting arms. (for mobile table only, insert casters into base).



### Step 6

**6.1**  
Assemble washer and lock washer onto threaded rod. Torque jam nut to minimum of 40 ft-lbs.



### Step 7

**7.1**  
Place table in upright position and return to service.

