

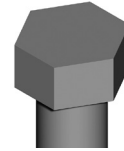


# Vivo® Stacking Frame Installation and Disassembly for Recycling Instructions

## Parts Included:



**A** Stacking Frame

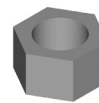


**B** 1/4-20 X 3/8 Pan Head  
Taptite Screw

Hardware Pack



**D** Washer (2)



**E** 3/8 - 16 Hex Nut



**F** 3/8 - 16 Hex  
Head Cap Screw

Hardware Pack

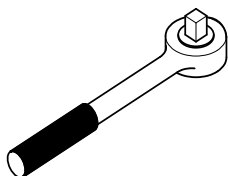


**G** Light Block



**H** Adapter Plate (2)  
(for use on 42" frames only)

## Tools Required:



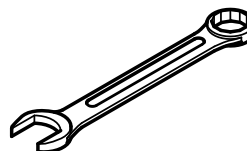
Ratchet



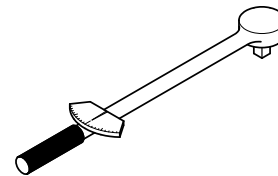
7/16" Socket



9/16" Socket



9/16" Wrench



Torque Wrench



Safety Glasses

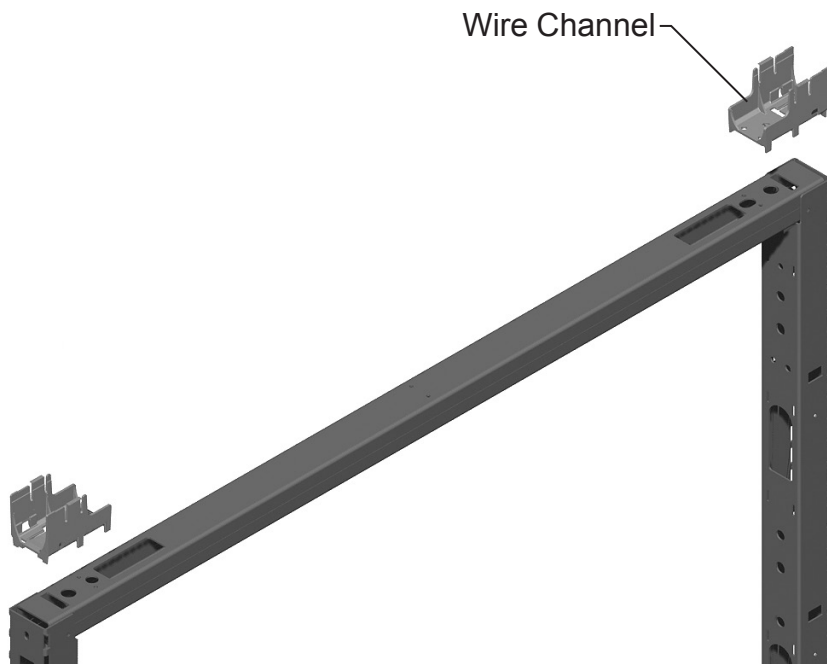
HermanMiller

Part no. 1b2gl9 rev L

© 2019 Herman Miller, Inc. Zeeland, Michigan. Printed in the U.S.A.  
© Herman Miller, Action Office and Vivo are among the registered trademarks of Herman Miller, Inc.  
™ Sense, Setu, Tu, Traverse and Sayl are among the trademarks of Herman Miller, Inc.

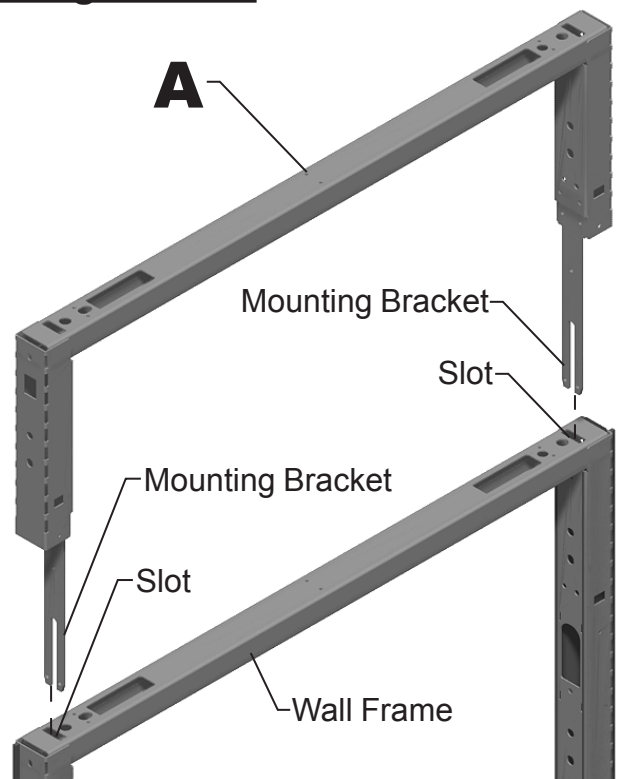
Illustrations and specifications are based on the latest product information available at the time of publication.  
The right is reserved to make changes in design and specifications at any time, without notice, and also to discontinue products.

## Assembly Instructions:



### For Stacking Frames Manufactured Prior to August 2019


2. Insert mounting brackets on stacking frame into slots in top rail of wall frame.



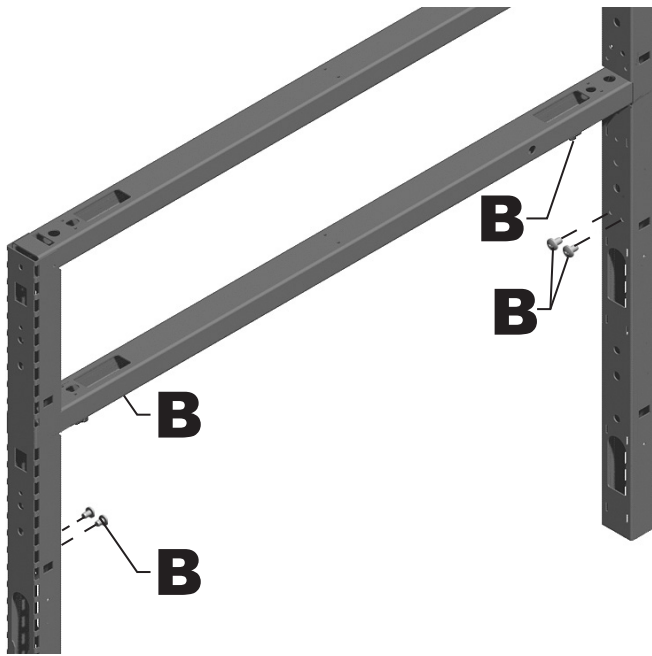
**HermanMiller**

Part no. 1b2gl9 rev L.

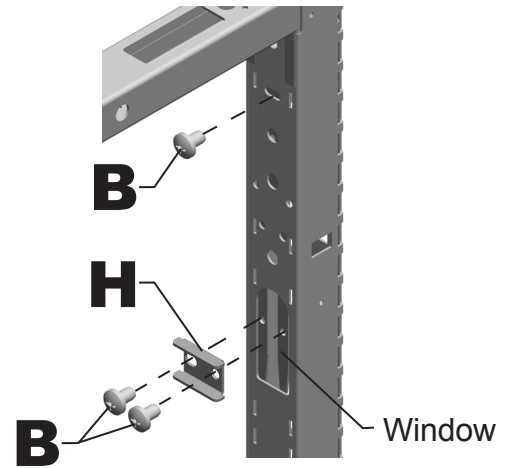
© 2019 Herman Miller, Inc. Zeeland, Michigan. Printed in the U.S.A.

©  **HermanMiller**, Action Office and Vivo are among the registered trademarks of Herman Miller, Inc.  
™ Sense, Setu, Tu, Traverse and Sayl are among the trademarks of Herman Miller, Inc.

Illustrations and specifications are based on the latest product information available at the time of publication.  
The right is reserved to make changes in design and specifications at any time, without notice, and also to discontinue products.



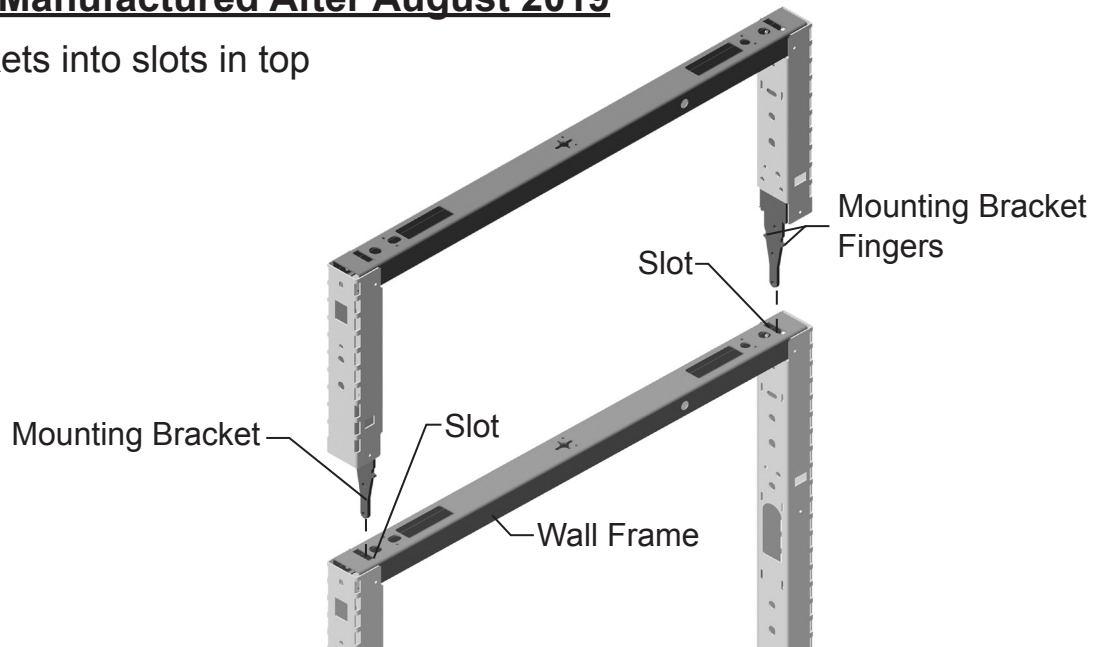
(42" Wall Frame only)



3. Secure stacking frame to wall frame with (6) screws(B). For 42" wall frame; position adaptor plate(H) into window in frame before installing washers and screws. For 42" application, install screw in frame slot followed by hole in bracket and slot in bracket.
4. **Important: Tighten Screws Securely.**

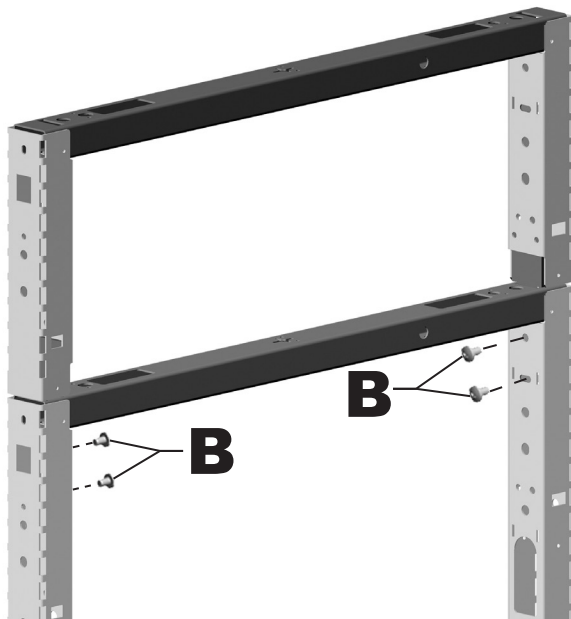
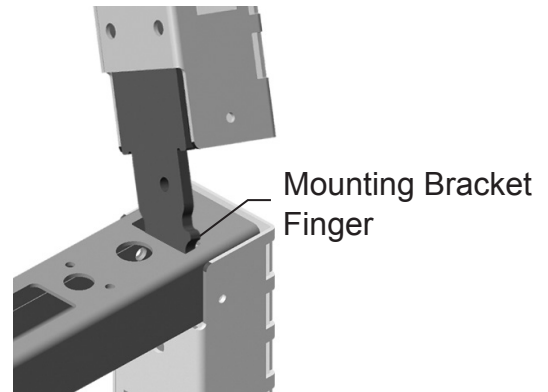
## **For Stacking Frames Manufactured After August 2019**

5. Insert Mounting Brackets into slots in top rail of wall frame.



When Mounting Bracket Fingers touch slots on Wall Frame, slightly rotate stacking Frame and insert Mounting Bracket Finger on one side into slot.

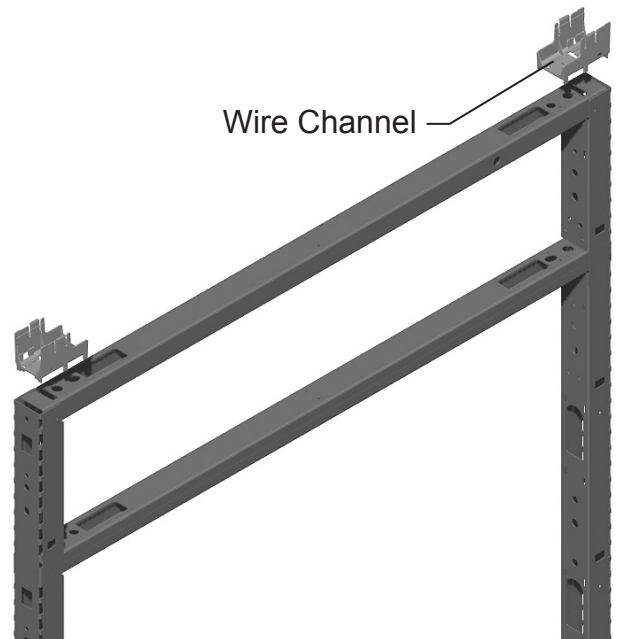
With one Mounting Bracket Finger engaged in wall frame slot, rotate Stacking Frame to vertical position while continuing to insert 2nd Mounting Bracket Finger into Slot. Fully Seat stacking Frame onto Wall Frame.

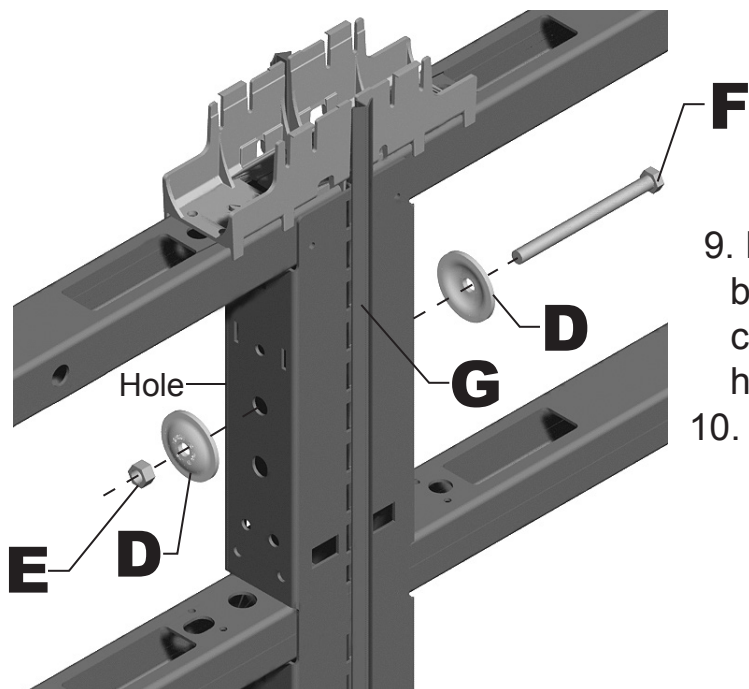


6. Secure Stacking Frame to wall frame with (4) screws (B).

7. **Important: Tighten Screws Securely.**

8. Reinstall wire channels on top of stacking frame.



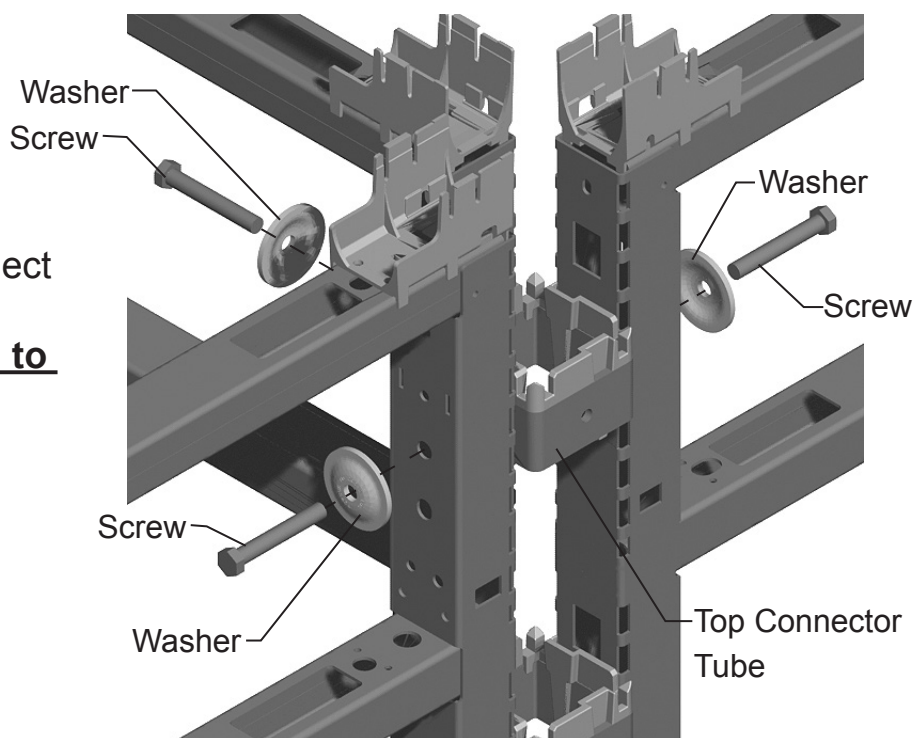


9. Make frame to frame connection with light block sandwiched between frames. Install cap screw (2) washers and hex nut in top hole.

10. **Important: Torque Screws to 200 in-lbs.**

11. Use product FT122. to connect joining stacking frames.

12. **Important: Torque Screws to 200 in-lbs.**



---

## **Disassembly for Recycling:**

### **Materials Identification and Segregation:**

Where possible, plastic components are marked with ASTM recycling codes. Use these codes to identify material type for recycling. Non marked components should be treated as mixed plastic. Ferrous metals can be identified using a small magnet for recycling. Non-ferrous metals should be separated and recycled separately.

To disassemble product, reverse steps 12 through 1.