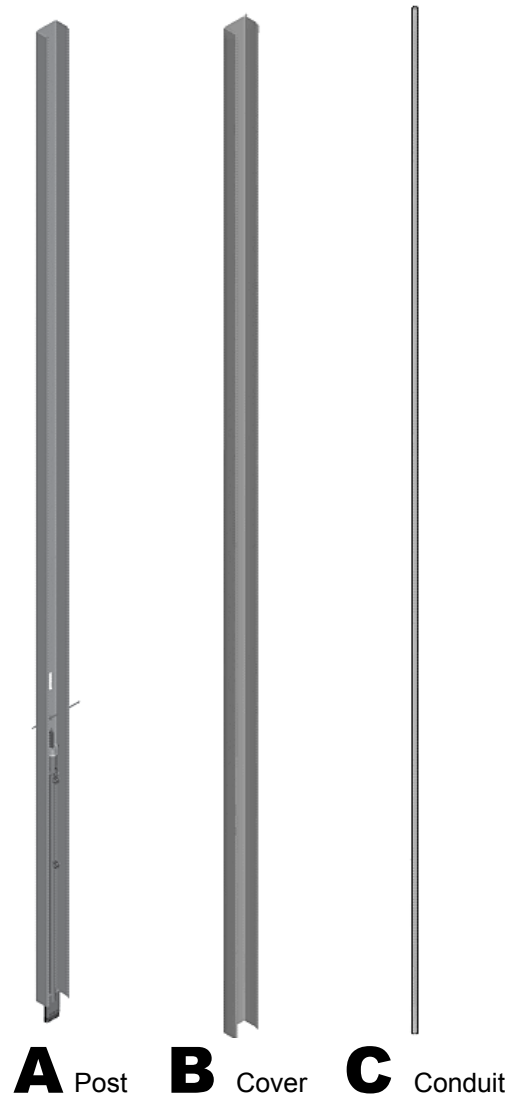




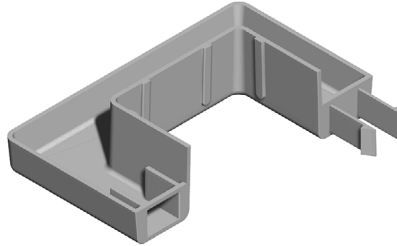
Canvas Office Landscape® Interiors Ceiling Power Entry, End of Run Installation and Disassembly for Recycling Instructions

Parts Included:

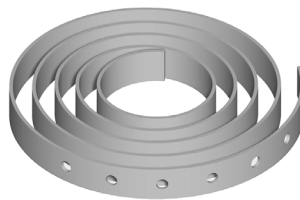


WARNING

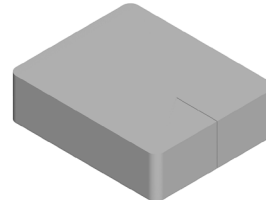
Disconnect electrical power before installation. Failure to do so can cause electrical shock and personal injury.



D Bezel Half (2)



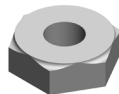
F Hanger Strap



G Air Plug



H 3/8-16 X 2 1/4 Screw (3)



I 3/8-16 Hex Nut (3)



K 1/4-20 Screw (3)



M 1/4 Flat Washer (3)



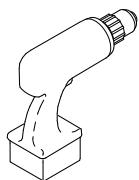
J 3/8" Flat Washer (6)



L 1/4-20 Hex Nut (3)

Hardware Pack

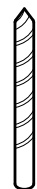
Tools Required:



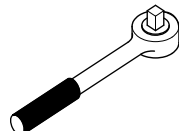
Power Driver



#2
Phillips Bit



5/16" Drill
Bit



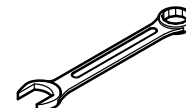
Ratchet Wrench



9/16" Socket



9/16" Wrench



7/16" Wrench



Safety Glass

IMPORTANT: Save these instructions for layout changes.

HermanMiller

Part no. 1b2gr0 rev G.

© 2016 Herman Miller, Inc. Zeeland, Michigan. Printed in the U.S.A.

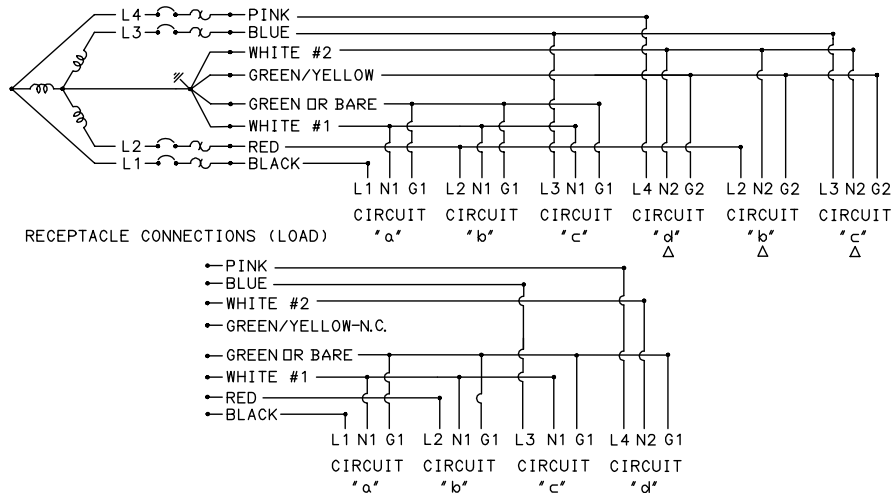
© Herman Miller and Canvas Office Landscape are among the registered trademarks of Herman Miller, Inc.

Illustrations and specifications are based on the latest product information available at the time of publication.

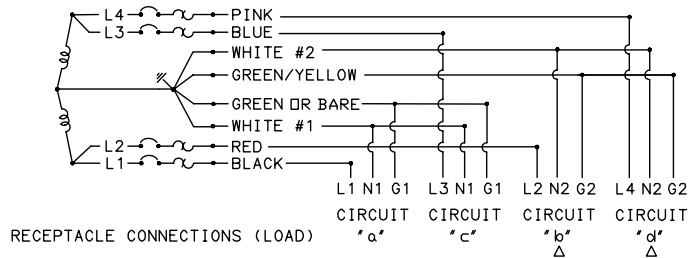
The right is reserved to make changes in design and specifications at any time, without notice, and also to discontinue products.

WIRING DIAGRAM

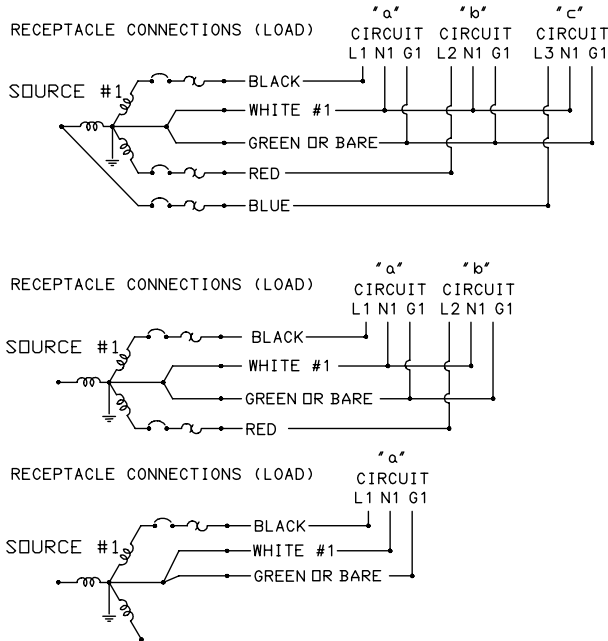
SYSTEM IS RATED FOR CONNECTION TO A GROUNDED 120/208-V, 3-PH WYE, 60-HZ 20 AMP MULTIWIRE BRANCH CIRCUIT.



SYSTEM IS RATED FOR CONNECTION TO A GROUNDED 120/240-V, 1-PH 60-HZ 20 AMP MULTIWIRE BRANCH CIRCUIT.

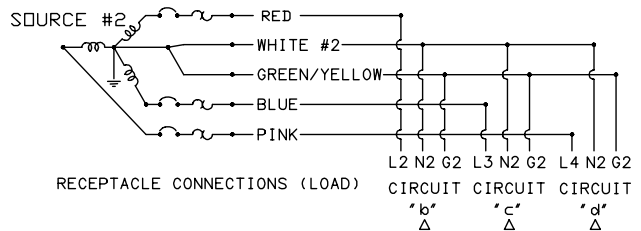
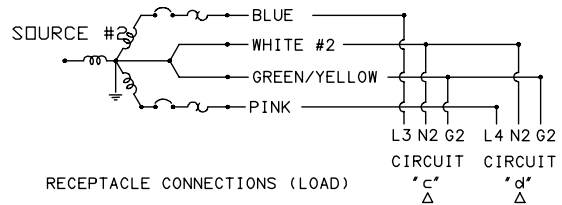
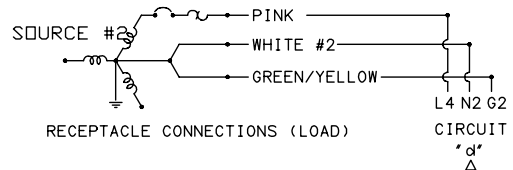


SYSTEM IS RATED FOR CONNECTION TO A MULTIPLE GROUNDED 120/280-V, 3-PH WYE, 60-HZ 20 AMP MULTIWIRE BRANCH CIRCUIT.

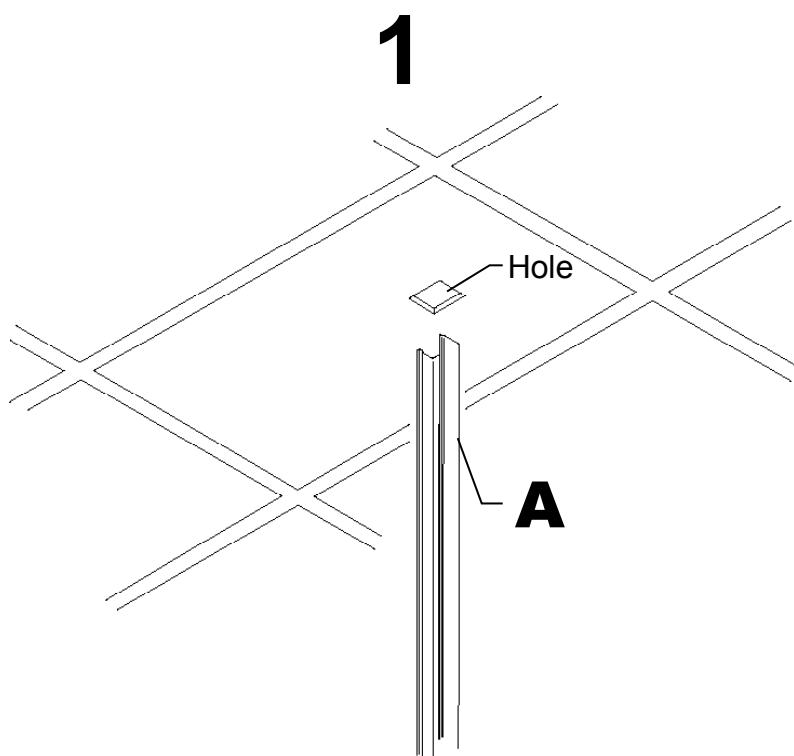


NOTES:

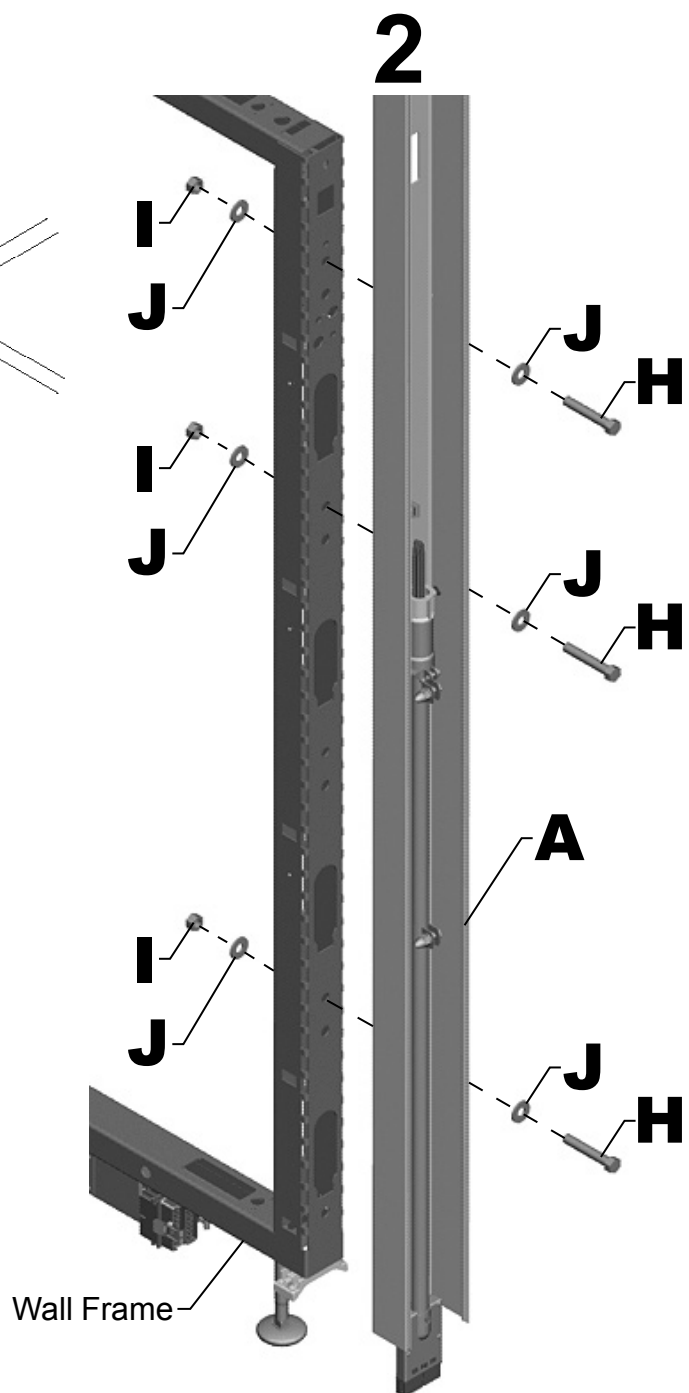
1. N1 AND N2 ARE 10 GA CONNECTORS.
2. GREEN/YELLOW CONDUCTOR CAN BE USED AS AN ISOLATED GROUND.



Assembly Instructions:



1. Cut hole in ceiling.
2. Insert Post into hole in ceiling.



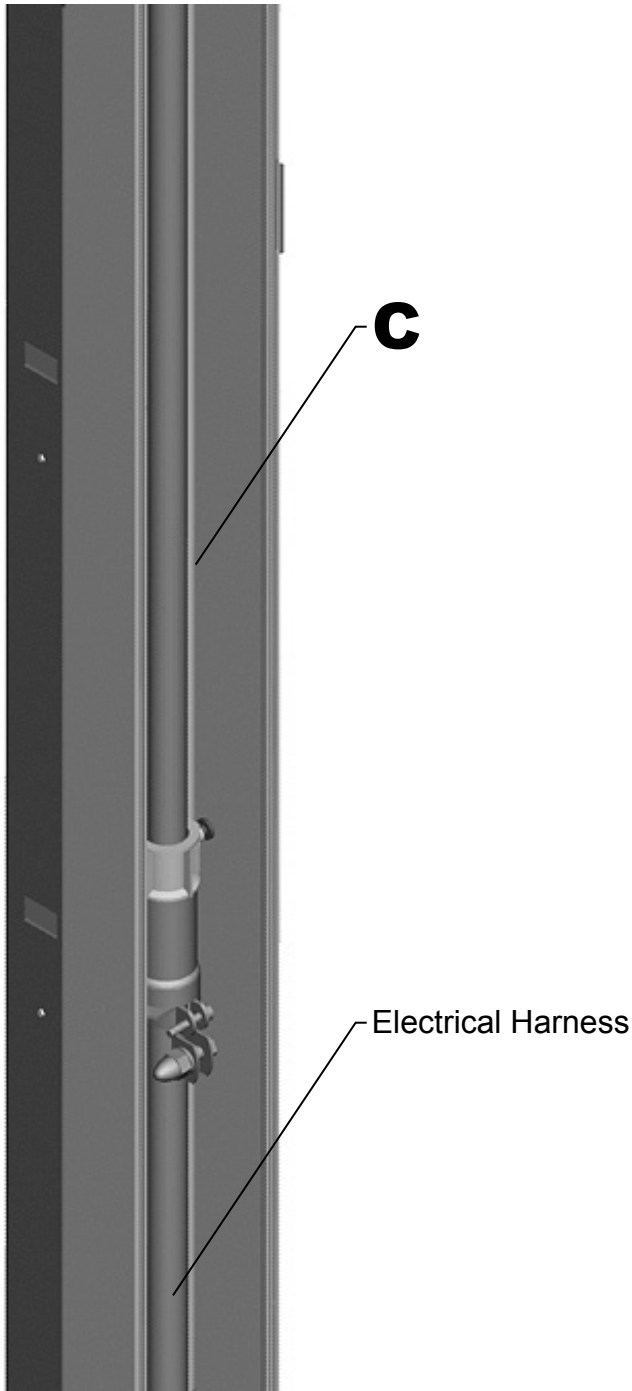
1. Attach Post (A) to Wall Frame with three Screws (H), Six Washers (J) and three Hex Nuts (I).

⚠ WARNING

Disconnect electrical power before installation. Failure to do so can cause electrical shock and personal injury.

3

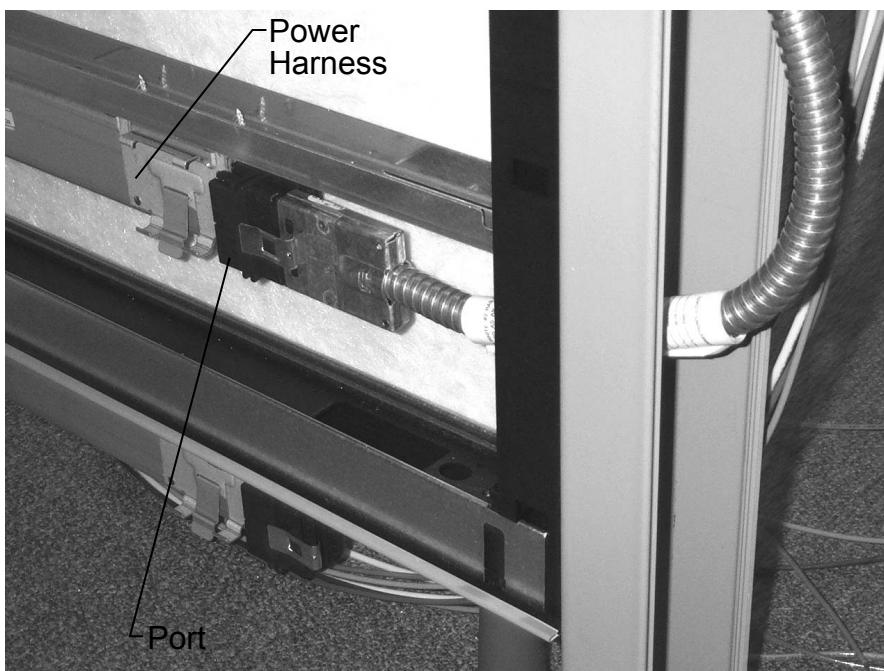
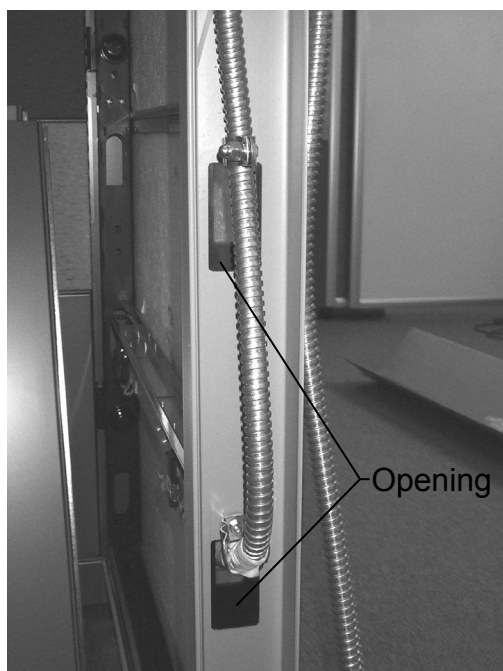
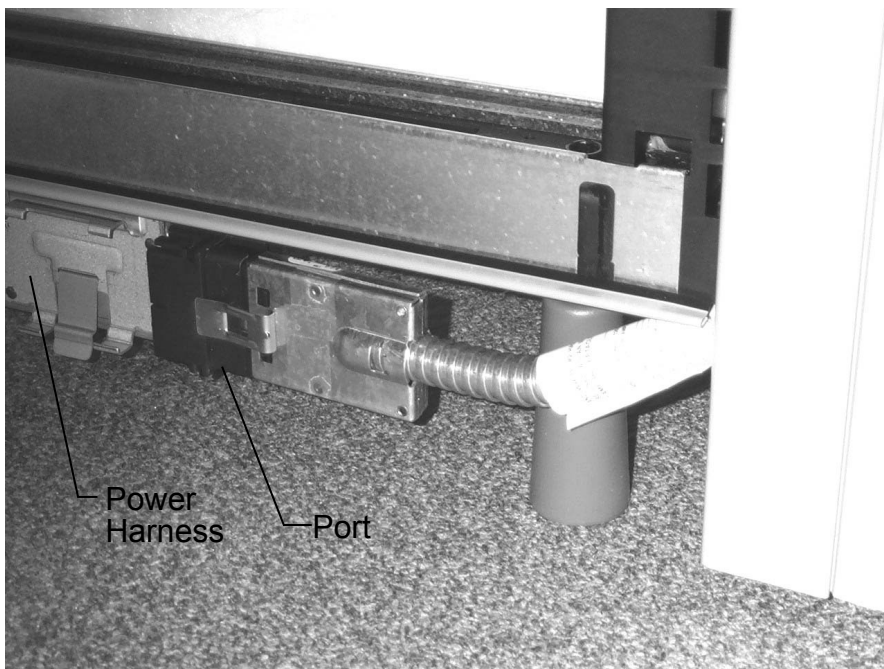
1. Run building wiring through Conduit.
2. Secure Conduit (C) to EMT Connector.
3. Connect other end of Conduit to Junction Box above ceiling.



WARNING

All electrical connections must be fully engaged and locked.
Loose connections can cause fire and / or electrical shock.

4




1. Route Harness through opening in Post and plug into Port in Power Harness of office electrical system.

HermanMiller

Part no. 1b2gr0 rev G.

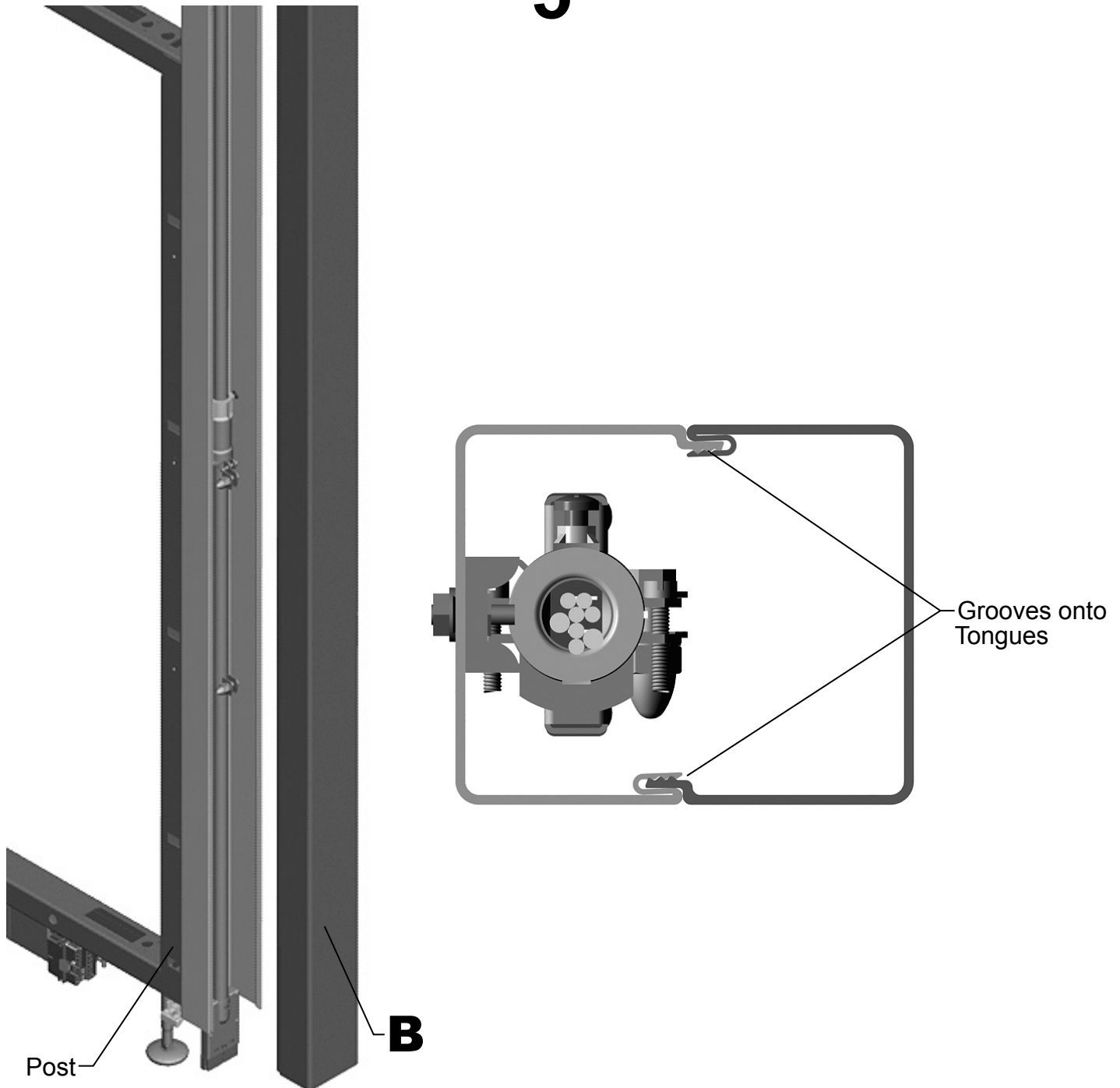
© 2016 Herman Miller, Inc. Zeeland, Michigan. Printed in the U.S.A.

©  HermanMiller and Canvas Office Landscape are among the registered trademarks of Herman Miller, Inc.

Illustrations and specifications are based on the latest product information available at the time of publication.

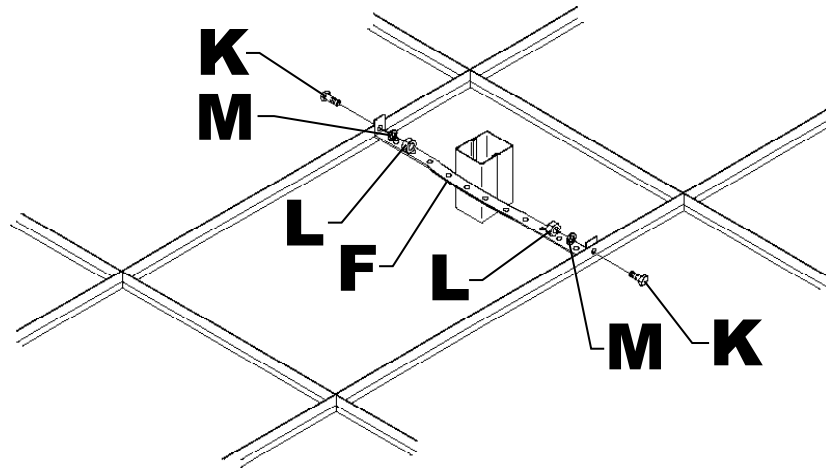
The right is reserved to make changes in design and specifications at any time, without notice, and also to discontinue products.

5



1. Assemble Pole Cover onto Post by engaging Groove and Tongue on Cover onto Tongue and Groove on Post. Start at top of Pole and work down.

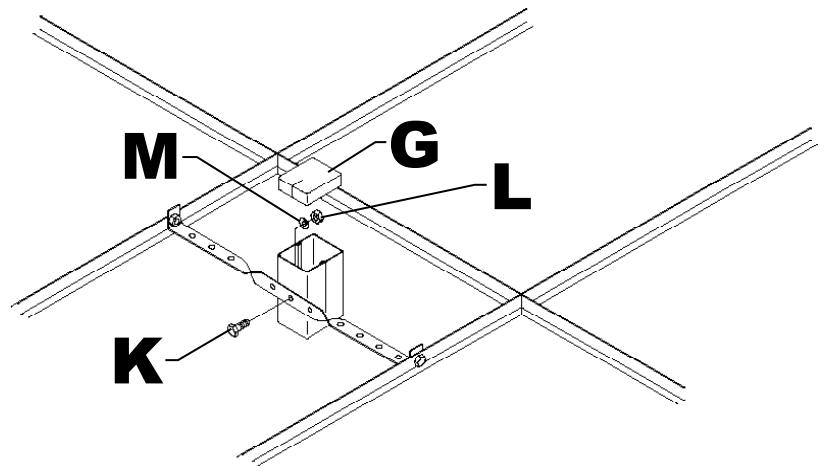
6



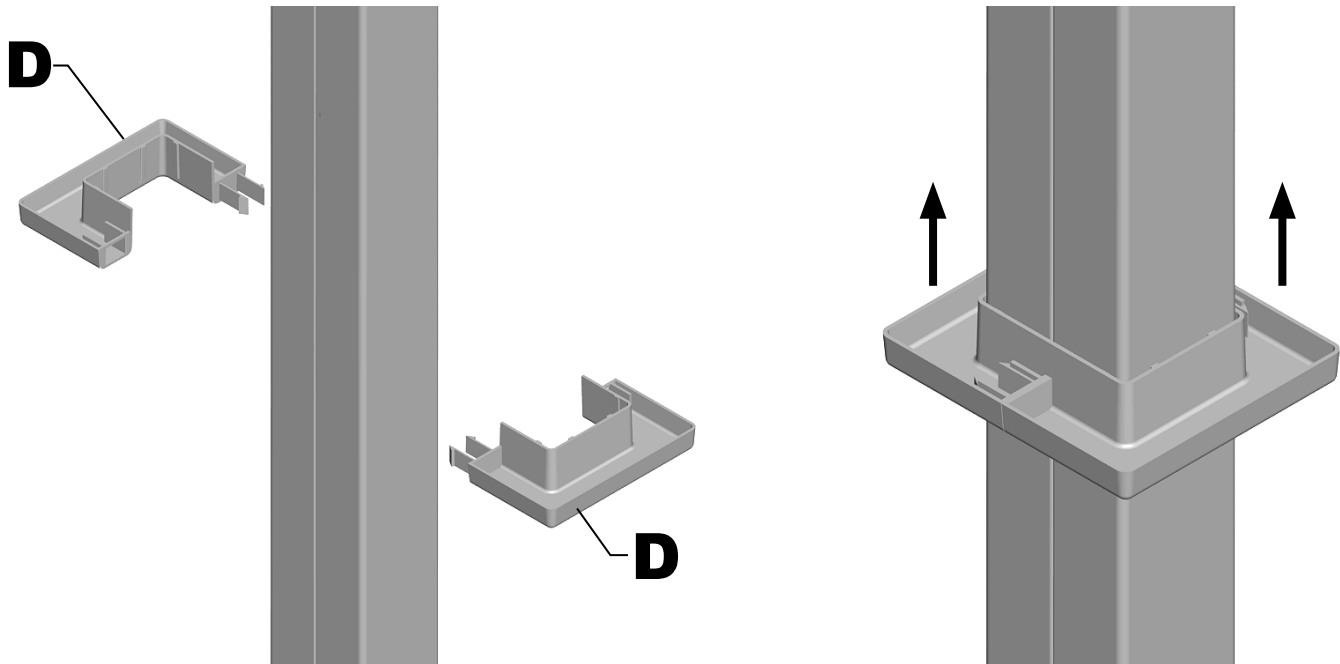
1. Drill two 5/16" holes in ceiling T-Bars directly across from each other in line with Power Pole.
2. Attach Hanger Strip (F) to T-Bars with two Screws (K), two Washers (M) and two Hex Nuts (L).

7

1. Twist Strap to lay against flat side of Power Pole.
2. Using Strap as a template, drill a 5/16" hole through Post.
3. Secure Power Pole to Strap with 1/4-20 Screw (K), Flat Washer (M) and 1/4-20 Hex Nut (L).
4. Install foam Air Plug (G) into top of Power Pole.



8



1. Assemble Bezel around Pole.
2. Slide Bezel up pole to ceiling.

Disassembly for Recycling:

Materials Identification and Segregation:

Where possible, plastic components are marked with ASTM recycling codes. Use these codes to identify material type for recycling. Non marked components should be treated as mixed plastic. Ferrous metals can be identified using a small magnet for recycling. Non-ferrous metals should be separated and recycled separately.

To disassemble product, reverse the above installation steps.