

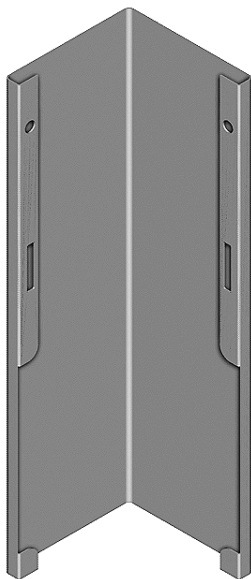


# Canvas Office Landscape® Interior Full Height & COH Connector Cover Installation and Disassembly for Recycling Instructions

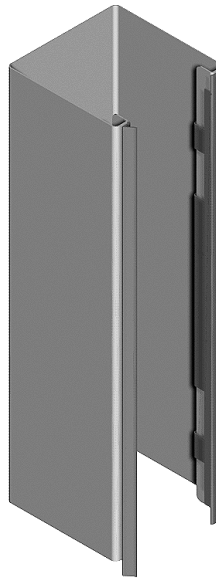
## Parts Included:



**A** One-sided COH  
Connector Cover  
(Painted & Veneer)



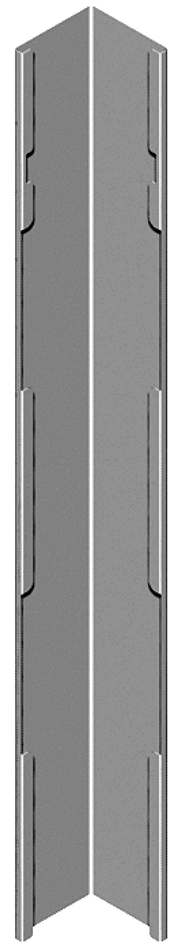
**B** Two-sided COH  
Connector Cover  
(Painted & Veneer)



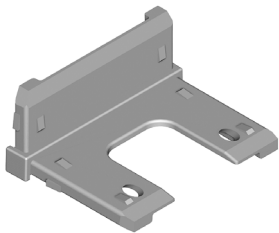
**C** Three-sided COH  
Connector Cover  
(Painted & Veneer)



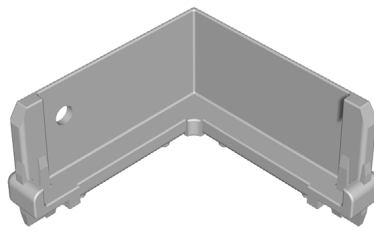
**I** One-Sided  
Connector Cover  
(Painted & Veneer)



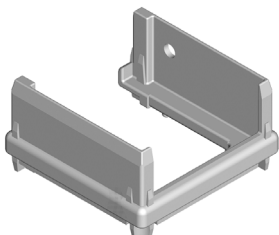
**J** Two-Sided  
Connector Cover  
(Painted & Veneer)



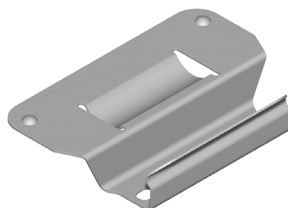
**D** Change of Height  
Trim Block



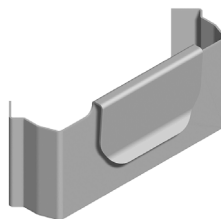
**E** Change of Height  
2-Sided Trim Block  
(Painted & Veneer)



**F** Change of Height  
3-Sided Trim Block  
(Painted & Veneer)



**G** Change of Height  
Trim Block Clip



**H** 7" 3-Sided Cover  
Attachment Clip

**IMPORTANT: Save these instructions for layout changes.**

HermanMiller

Part no. 1b2hnp rev J.

© 2017 Herman Miller, Inc. Zeeland, Michigan. Printed in the U.S.A.

© Herman Miller and Canvas Office Landscape are among the registered trademarks of Herman Miller, Inc.

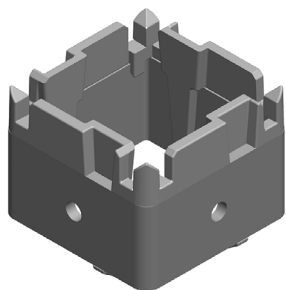
Illustrations and specifications are based on the latest product information available at the time of publication.

The right is reserved to make changes in design and specifications at any time, without notice, and also to discontinue products.

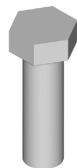


## Canvas Office Landscape® Interior Full Height & COH Connector Cover Installation and Disassembly for Recycling Instructions

### Parts Included:



**K** Connector Tube

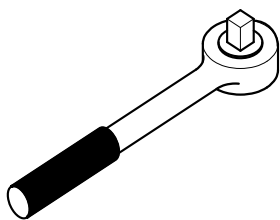


**L** 3/8-16 Hex Head  
Cap Screw

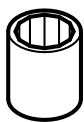


**M** Washer

### Tools Required:



Ratchet



9/16" Socket



Safety Glass

**HermanMiller**

Part no. 1b2hnp rev J.

© 2017 Herman Miller, Inc. Zeeland, Michigan. Printed in the U.S.A.

© Herman Miller and Canvas Office Landscape are among the registered trademarks of Herman Miller, Inc.

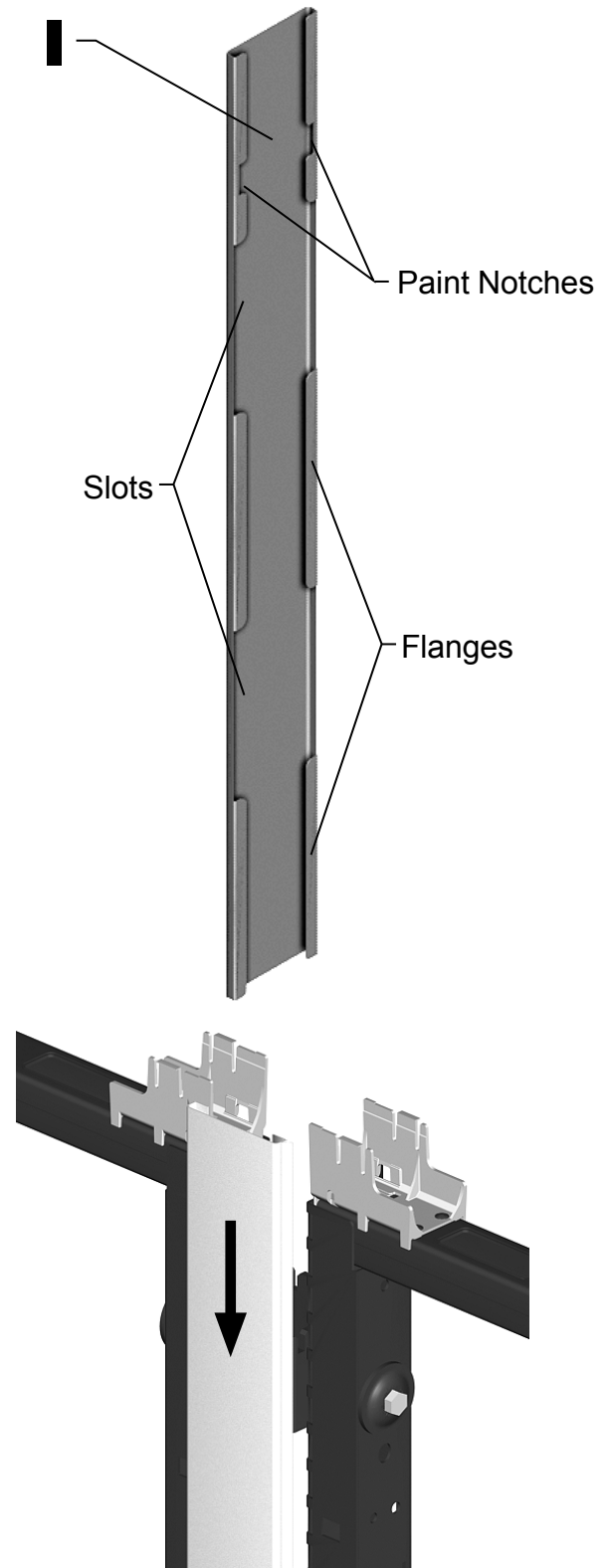
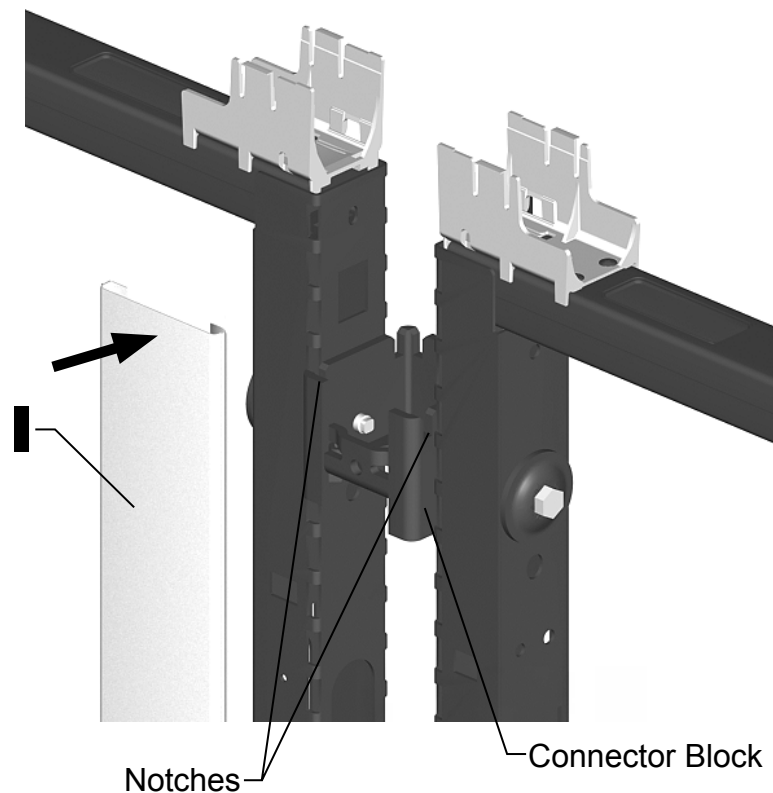
Illustrations and specifications are based on the latest product information available at the time of publication.

The right is reserved to make changes in design and specifications at any time, without notice, and also to discontinue products.

# Assembly Instructions:

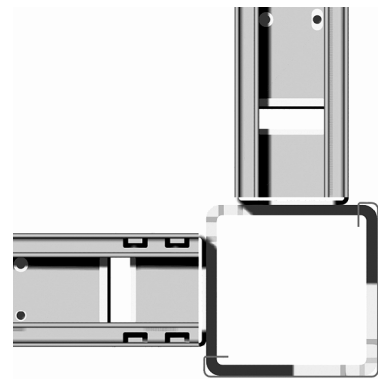
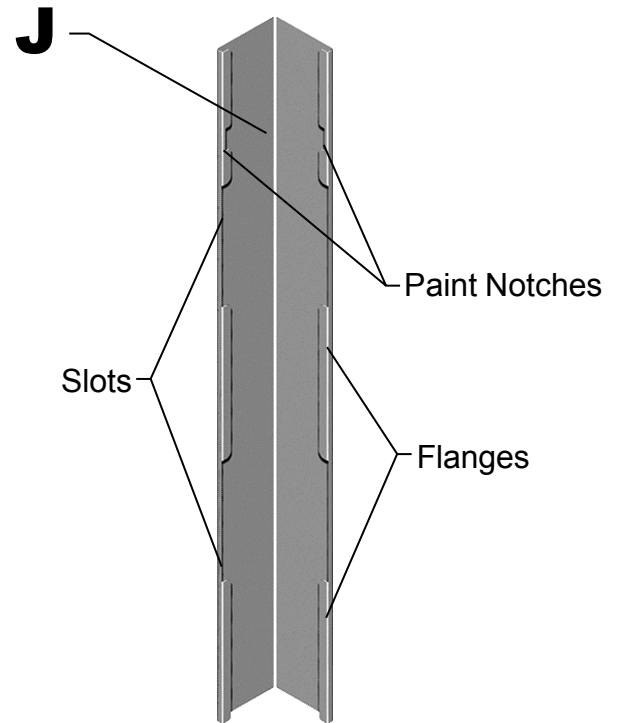
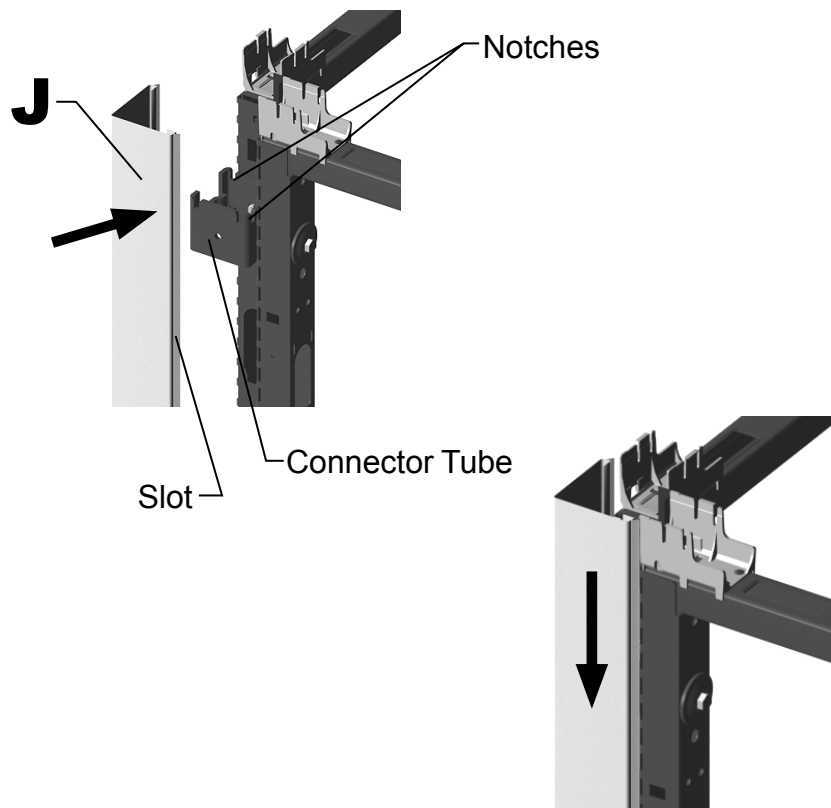
## **1 One-sided Full Height Connector Cover**

1. Install tiles on frames.  
(graphics shown without tiles for clarity)
2. Locate slots, flanges and paint notches in One-Sided Full Height Cover Connector (I). make sure the paint notches are at the top of the part.
3. Install One-Sided Full Height Connector Cover (I) by placing slots over Connector Block and sliding downward making sure that flanges engage in notches on Connector Tubes.



## 2 Two-sided Full Height Connector Cover

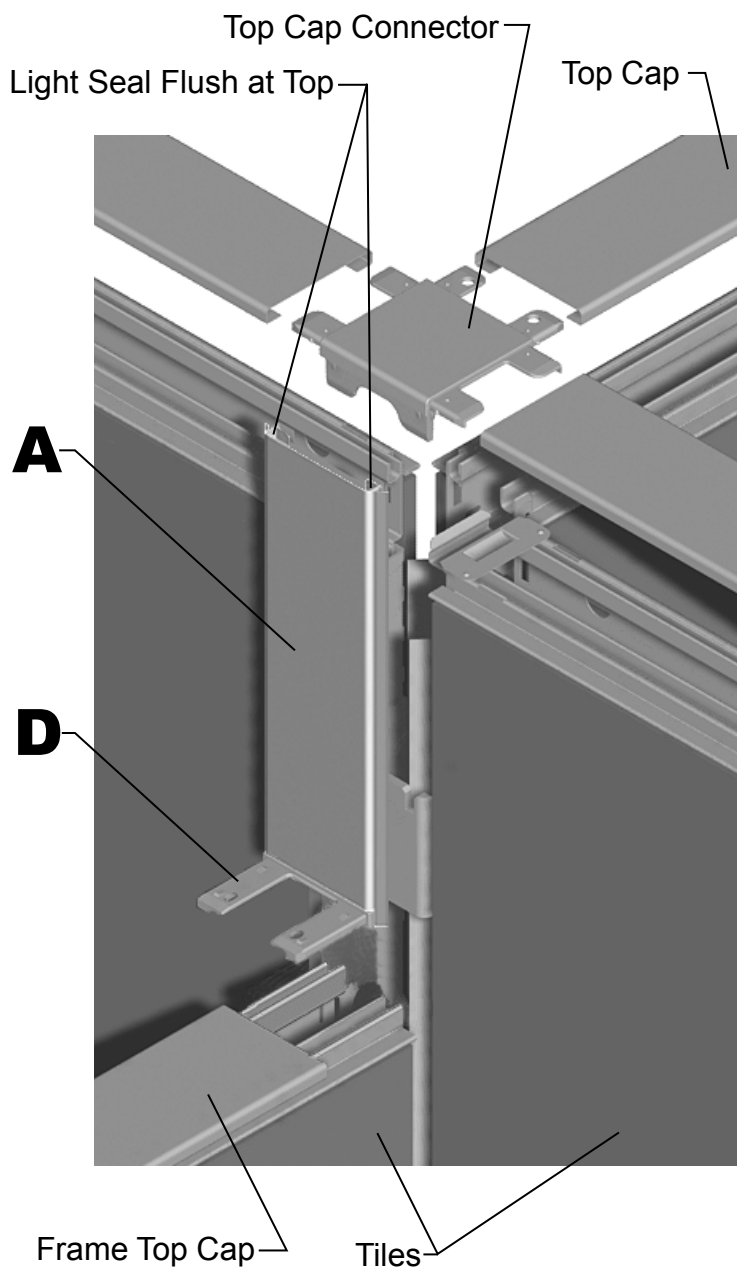
1. Install tiles on frames.  
(graphics shown without tiles for clarity)
2. Locate slots, flanges and paint notches in Two-sided Full Height Connector Cover (J).
3. Install Two-Sided Full Height Connector Cover (J) by placing slots over Connector Blocks and sliding downward making sure that flanges engage in notches on Connector Tubes & paint notches are on top of part.



Top View Fully Engaged  
Connector Cover

### 3 One-sided COH Connector Cover

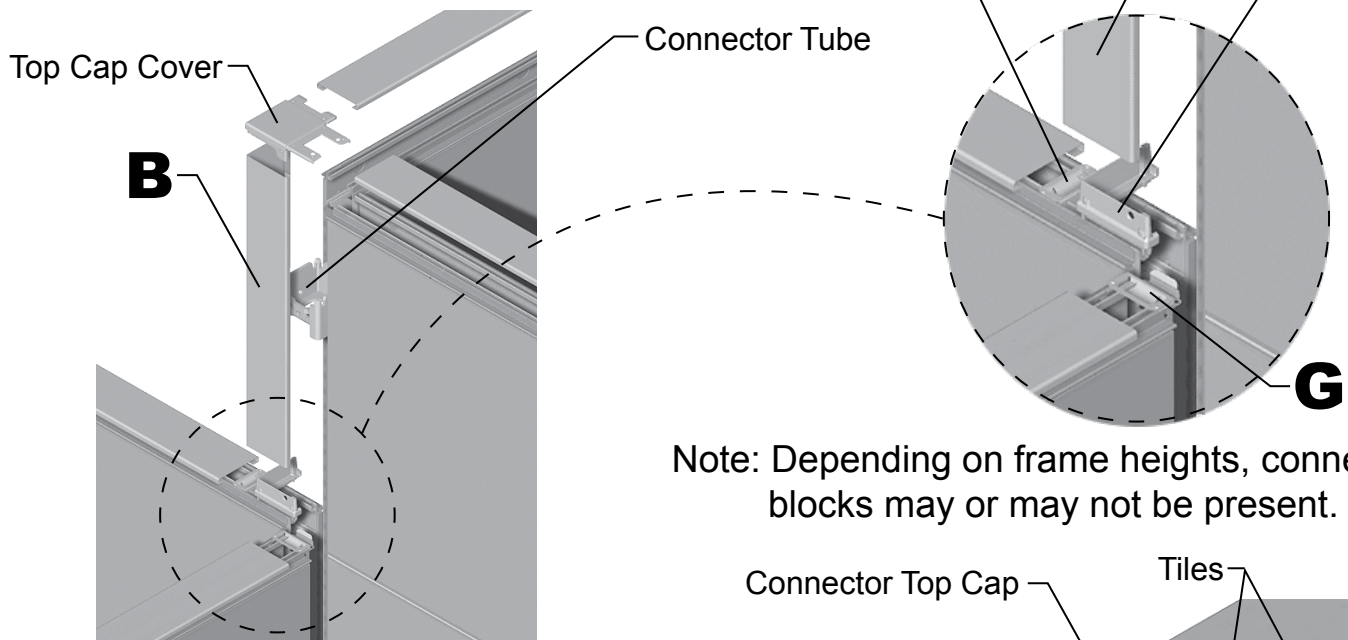
1. Install tiles on frames.
2. Install COH Trim Block (D) on the bottom of Connector Cover (A).



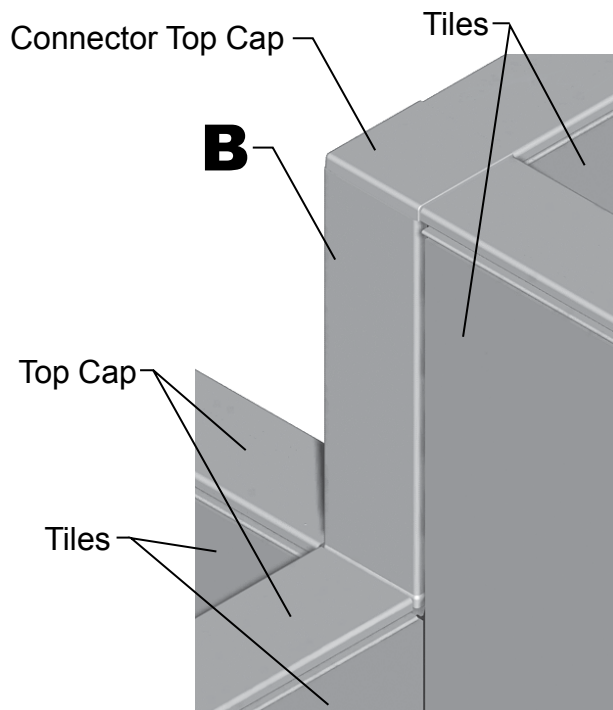
3. Install Connector Cover assembly onto Lower Frame and Connector Tube.
4. Insert Top Cap Connector into Frame Top Caps.
5. Attach Upper Frame Top Caps to frames making sure Top Cap Connector fits into Connector Cover (A).
6. Attach Lower Frame Top Caps and Slide Over (D).



## 4 Two-sided COH Connector Cover



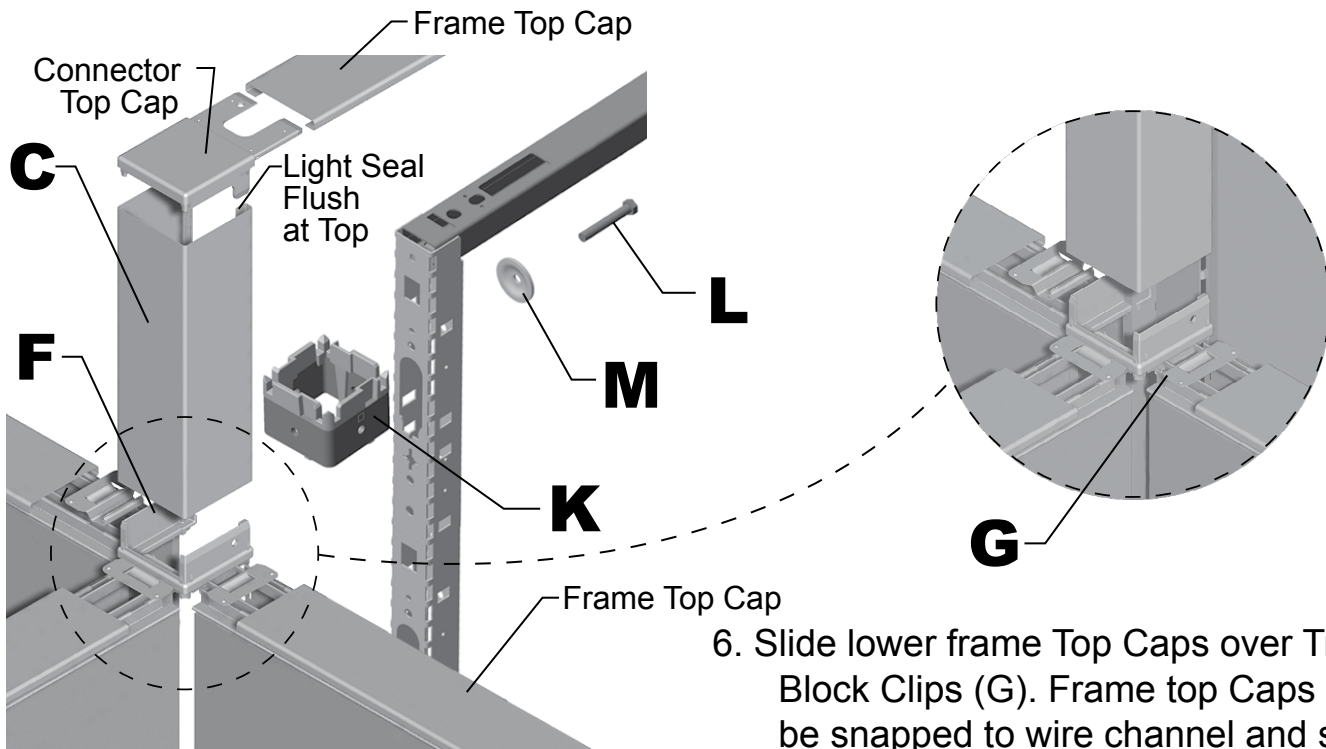
Note: Depending on frame heights, connector blocks may or may not be present.



1. Install tiles on frames.
2. Install COH Trim Block Clips (G) on Trim Block (E) only on the sides where frame top caps will mate.
3. Install COH 2-sided Trim Block (E) with clips on wire channel.
4. Slide Lower Frame Top Caps over Trim Blocks Clips (G). Frame Top Caps must be snapped to wire channel and slid over (G).
5. Slide 2-sided Connector Cover (B) over Trim Block (E) and Connector Tube (22" only).

6. Insert Connector Top Cap into Frame Top Caps.
7. Attach Top Caps to Frames making sure the Connector Top Cap fits into Connector Cover (B).

## 5 Three-sided COH Connector Cover



1. Attach Connector Tube (K) to frame using Washer (M) and Screw (L). Tighten screw (L).

2. Install tiles on frames.

3. Install COH Trim Block Clips (G) on Trim Block (F) only on sides where frame top caps mate.

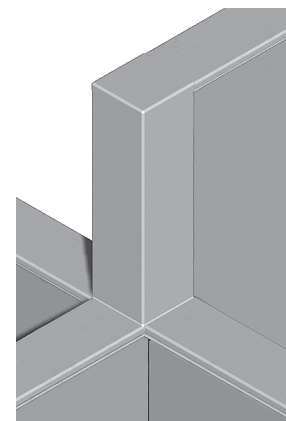
4. Install COH 3-sided Trim Block (F) w/Trim Block Clips (G) on wire channel.

5. Slide 3-sided Connector Cover (C) over Trim Block (F) & Connector Tube (K).

6. Slide lower frame Top Caps over Trim Block Clips (G). Frame top Caps must be snapped to wire channel and slid over (G).

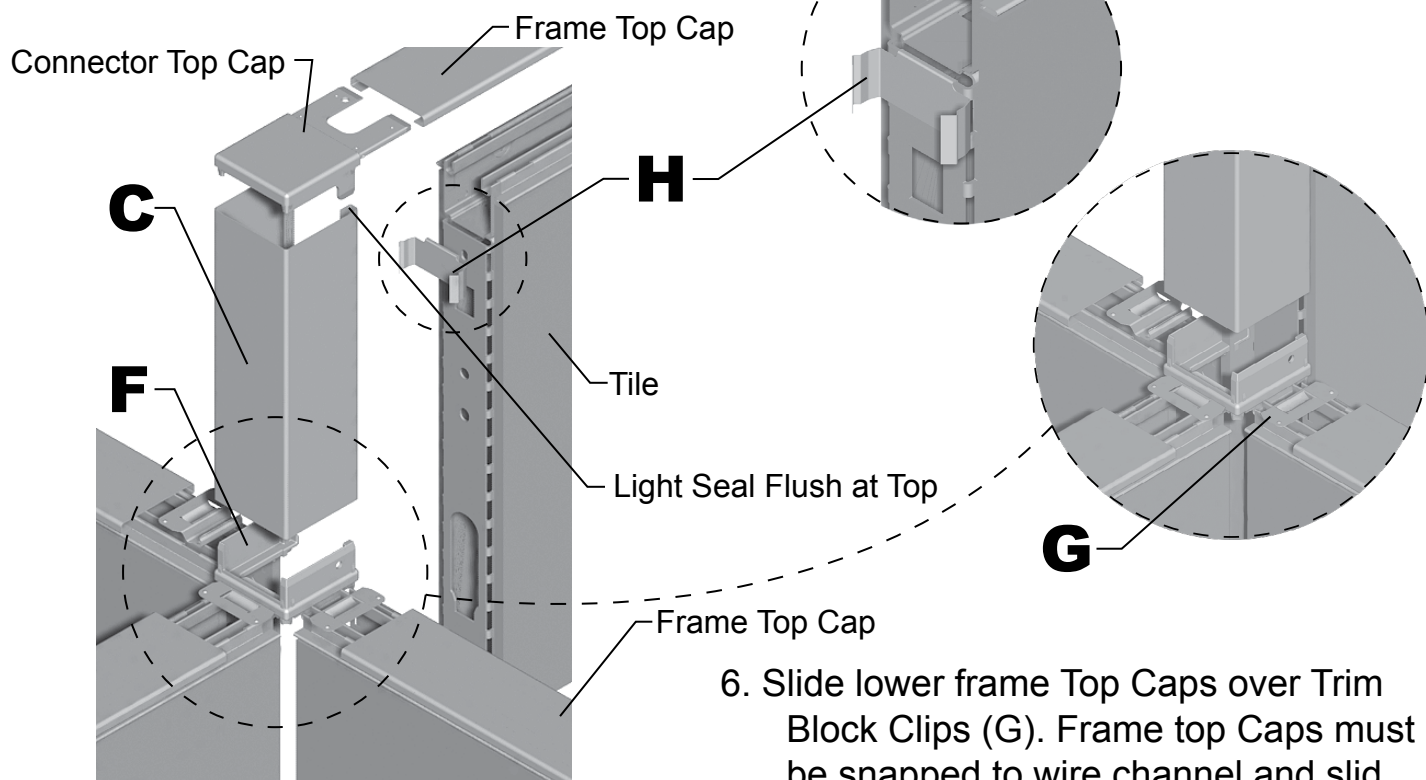
7. Insert Connector Top Cap into Frame Top Caps.

8. Attach Top Caps to Frames making sure Connector Top Cap fits into Connector Cover (C).

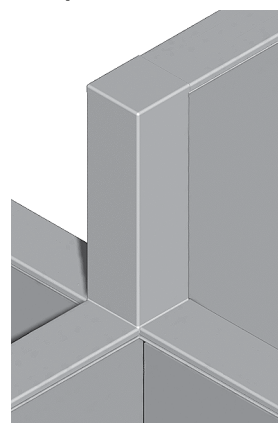




# 7" Three-sided COH Connector Cover



1. Install tiles on frames.
2. Install 3-sided Cover Attachment Clip (H) on stile.
3. Install COH Trim Block Clips (G) on Trim Block (F) only on sides where frame top caps mate.
4. Install COH 3-sided Trim Block (F) w/Trim Block Clips (G) on wire channel.
5. Slide 3-sided Connector Cover (C) over Trim Block (F) & Attachment Clip (H).
6. Slide lower frame Top Caps over Trim Block Clips (G). Frame top Caps must be snapped to wire channel and slid over (G).
7. Insert Connector Top Cap into Frame Top Caps.
8. Attach Top Caps to Frames making sure Connector Top Cap fits into Connector Cover (C).





---

## **Disassembly for Recycling:**

### **Materials Identification and Segregation:**

Where possible, plastic components are marked with ASTM recycling codes. Use these codes to identify material type for recycling. Non marked components should be treated as mixed plastic. Ferrous metals can be identified using a small magnet for recycling. Non-ferrous metals should be separated and recycled separately.

To disassemble product, reverse the above installation steps.