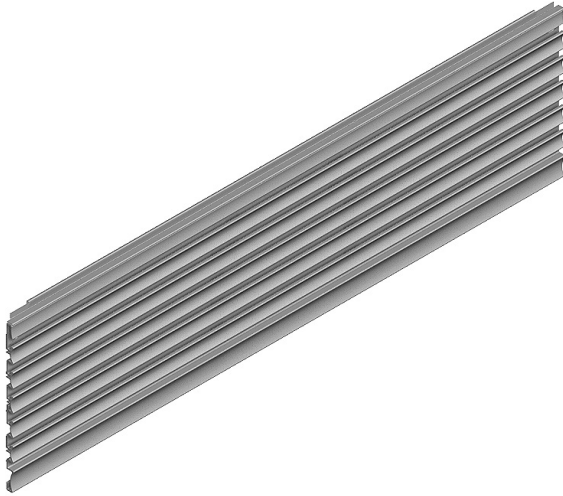


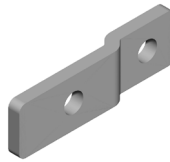


Canvas Office Landscape® Monitor Arm Rail Tile Installation and Disassembly for Recycling Instructions

Parts Included:



A Monitor Arm Rail Tile Assembly



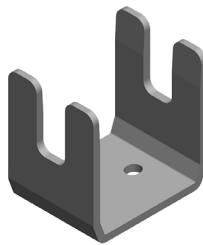
B Mounting Plate (2)



C Pan Head Tap Tite (2)

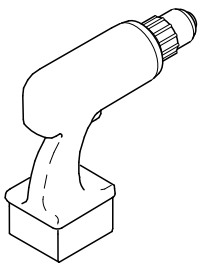


D Pan Head Tapping
Screw (8)
Hardware Pack



E Mid Rail Bracket

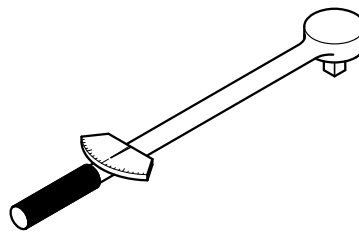
Tools Required:



Power Driver



#2 Phillips Bit



Torque Wrench



Safety Glass

IMPORTANT: Save these instructions for layout changes.

HermanMiller

Part no. 1b2hht rev J.

© 2014 Herman Miller, Inc. Zeeland, Michigan. Printed in the U.S.A.

© Herman Miller and Canvas Office Landscape are among the registered trademarks of Herman Miller, Inc.

Illustrations and specifications are based on the latest product information available at the time of publication.

The right is reserved to make changes in design and specifications at any time, without notice, and also to discontinue products.

Assembly Instructions:

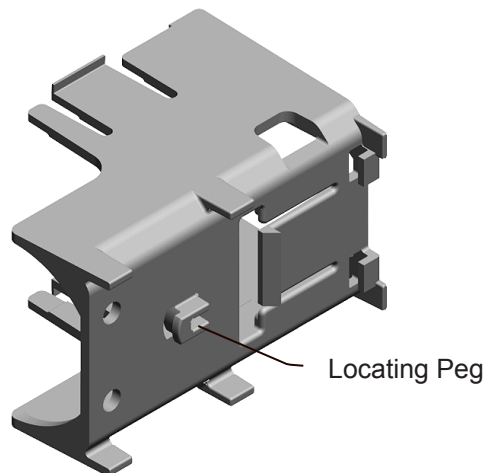
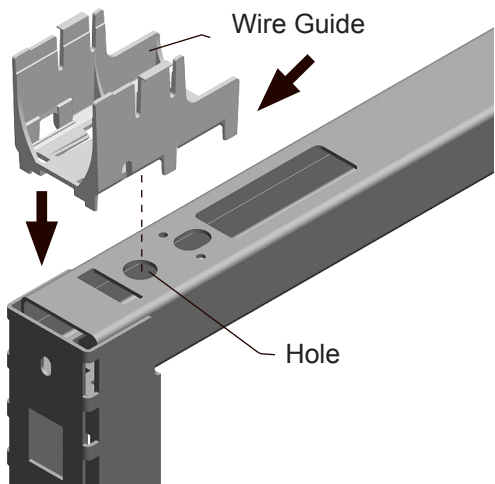


WARNING

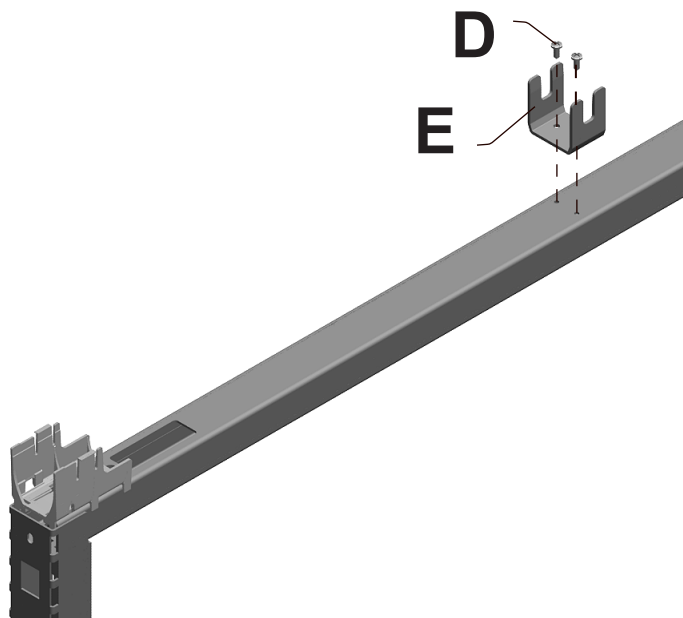
Incorrect installation can allow tile to fall, causing product damage and/or personal injury. Torque specification must be strictly adhered to.

T Version

1 Monitor Rail Tile in Upper most Position on Frame:



1. Set Wire Guide onto end of Frame with Location Peg into hole in frame. Slide Wire Guide toward end off Frame until it locks in place




2. Install Mid Rail Bracket (C) to frame with 2 Tapping Screws (D). Torque Screws to 11-15 in-lbs.

HermanMiller

Part no. 1b2hht rev J.

© 2014 Herman Miller, Inc. Zeeland, Michigan. Printed in the U.S.A.

©  **HermanMiller** and Canvas Office Landscape are among the registered trademarks of Herman Miller, Inc.

Illustrations and specifications are based on the latest product information available at the time of publication.

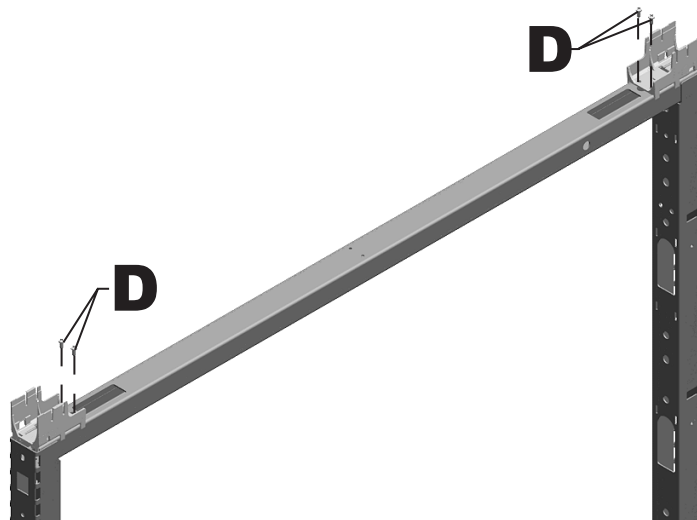
The right is reserved to make changes in design and specifications at any time, without notice, and also to discontinue products.

3. Install (4) Tapping screws (D) through plastic Wire Channel into frame.

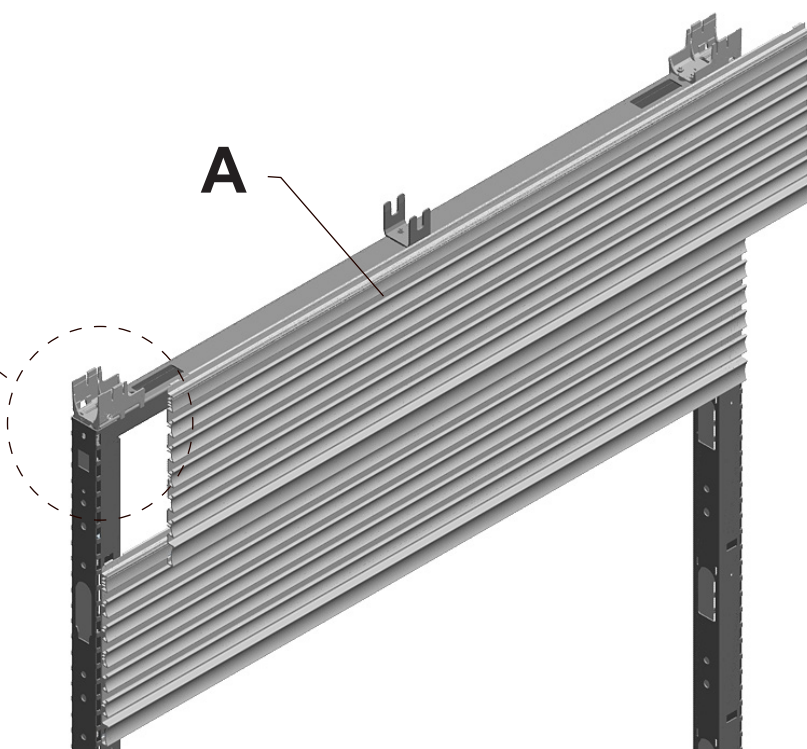
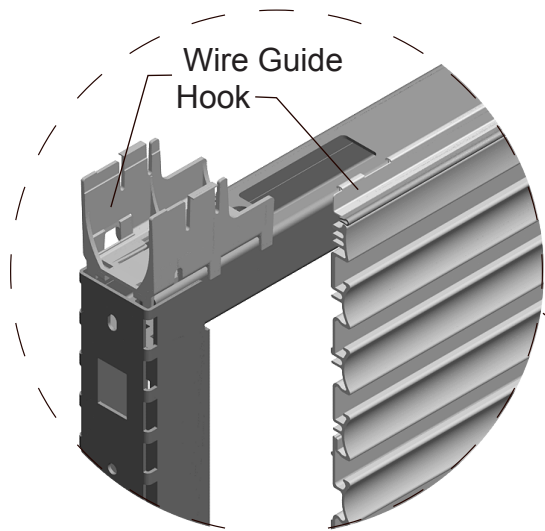


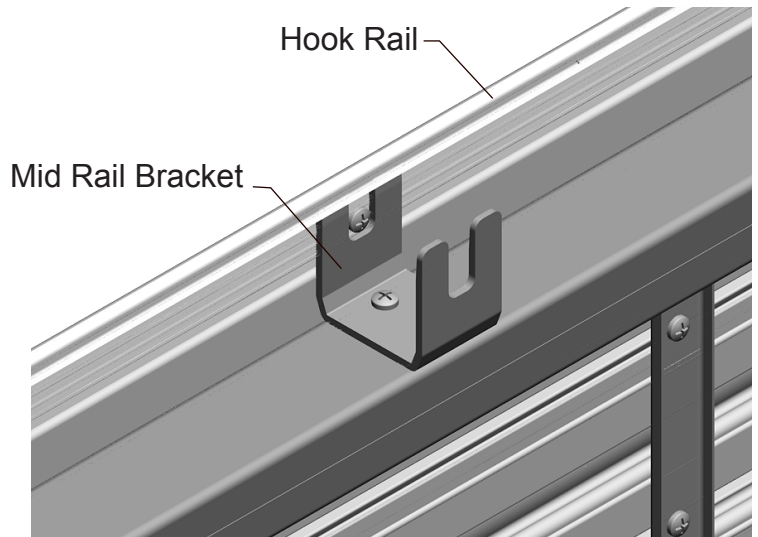
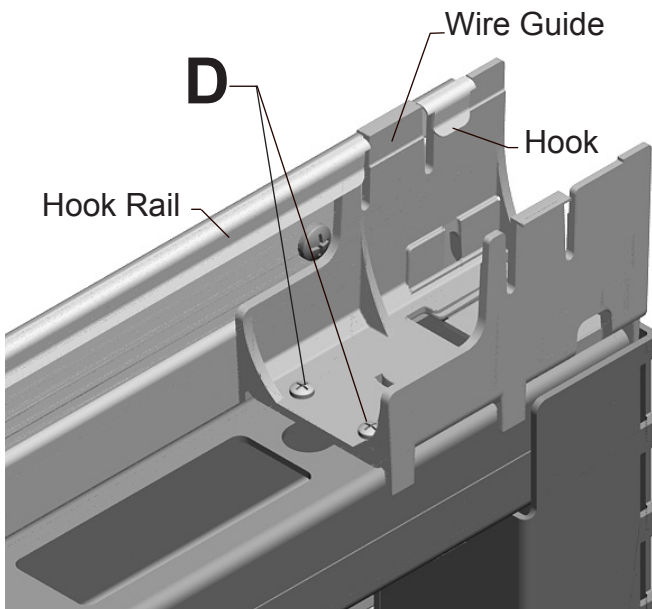
WARNING

Incorrect installation can allow tile to fall, causing product damage and/or personal injury. Tapping screw must be installed for installation upper most position



(For Monitor Arm Rail Tile)





4. Hook Rail Tile (A) onto Wire Guides with Hook Rail capturing Mid Rail Bracket.

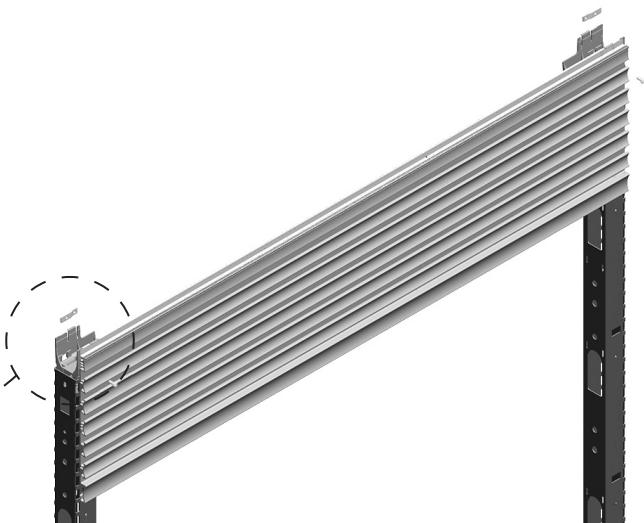
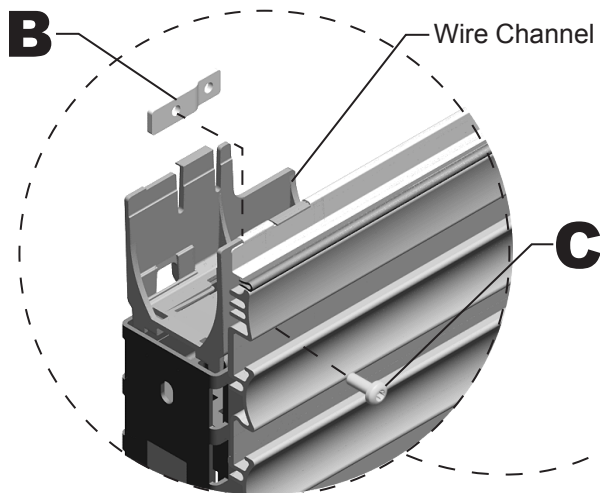
5. Remove Screw (C) and Mounting Plates (B). Attach Rail Tile to Frame by driving Screw (C) into Mounting Plate through locating holes in Tile and Wire Channel (left screw first). Torque Screws to 11-15 in-lbs.

WARNING

Incorrect installation can allow tile to fall, causing product damage and/or personal injury. Torque specifications must be strictly adhered to.

Caution


For use with monitors weighing 20 pounds or less, and with HMI approved monitor arms only. Incorrect use of product can cause product damage and/or personal injury.



HermanMiller

Part no. 1b2hht rev J.

© 2014 Herman Miller, Inc. Zeeland, Michigan. Printed in the U.S.A.

©  HermanMiller and Canvas Office Landscape are among the registered trademarks of Herman Miller, Inc.

Illustrations and specifications are based on the latest product information available at the time of publication.

The right is reserved to make changes in design and specifications at any time, without notice, and also to discontinue products.

2 Monitor Rail Tile in mid position on Frame:

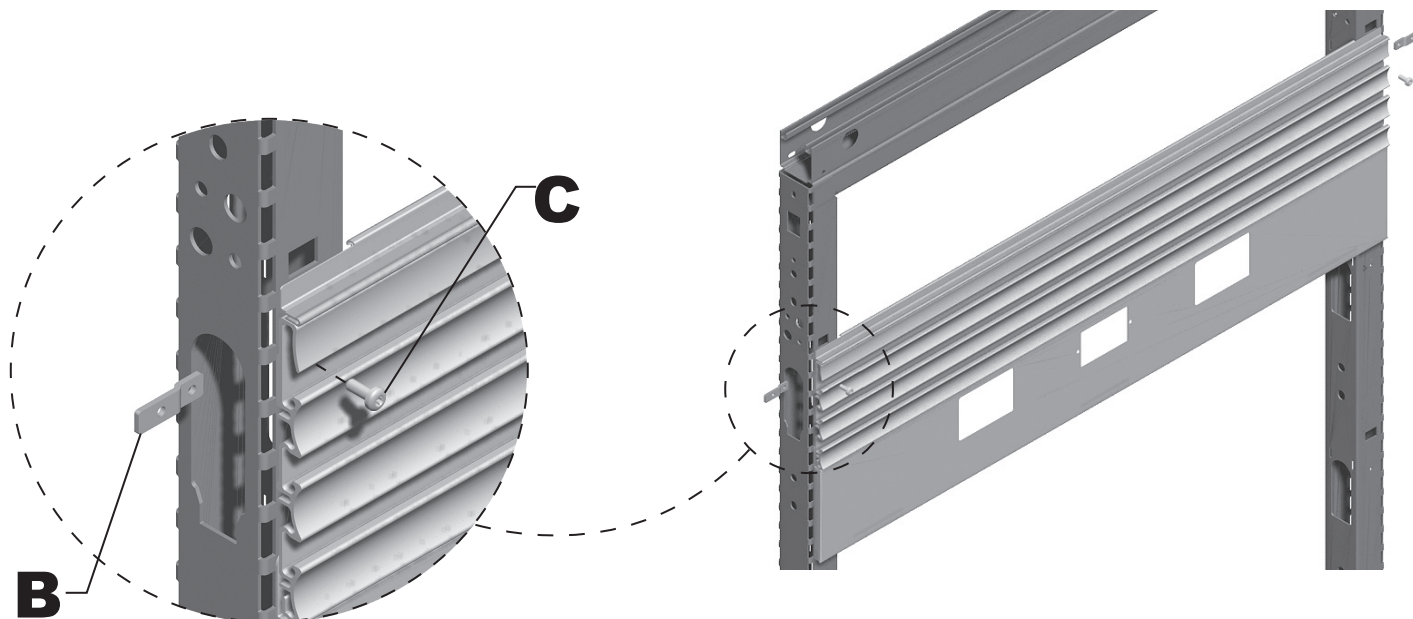
1. Remove Mounting Plates **(B)**.
2. Attach Rail Tile with 2 screws **(C)** directly to pilot holes in frame (left screw first). Torque screws to 11-15 in-lbs. Discard Mounting Plates.

WARNING

Incorrect installation can allow tile to fall, causing product damage and/or personal injury. Torque specifications must be strictly adhered to.

Caution

For use with monitors weighing 20 pounds or less, and with HMI approved monitor arms only. Incorrect use of product can cause product damage and/or personal injury.



Disassembly for Recycling:

Materials Identification and Segregation:

Where possible, plastic components are marked with ASTM recycling codes. Use these codes to identify material type for recycling. Non-marked components should be treated as mixed plastic. Ferrous metals can be identified using a small magnet for recycling. Non-ferrous metals should be separated and recycled separately.

To disassemble product, reverse the above installation steps.