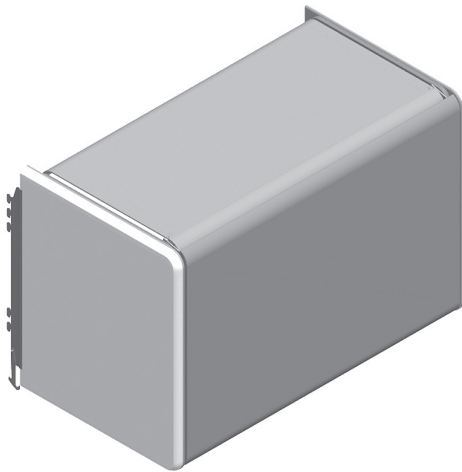


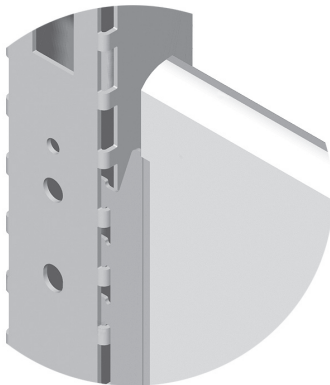


# Canvas Office Landscape® Shelf and Flipper Unit Installation and Disassembly for Recycling Instructions

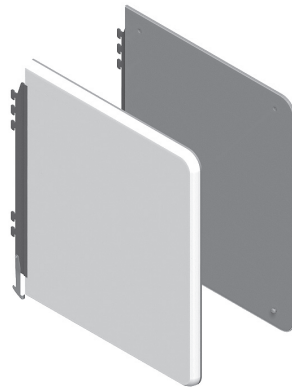
## Products Included:



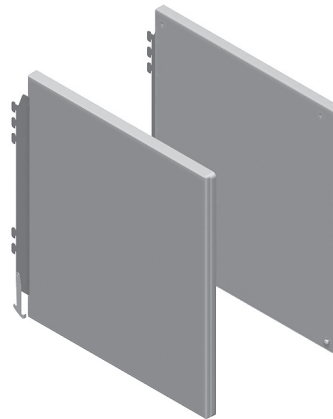
FT420 B-Style Overhead



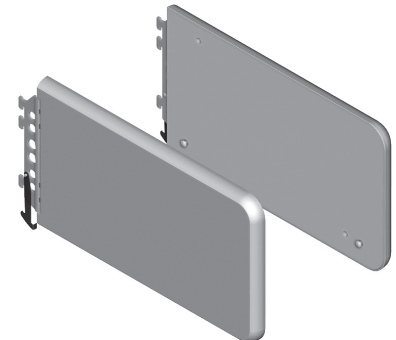
FT430 E-Style Overhead



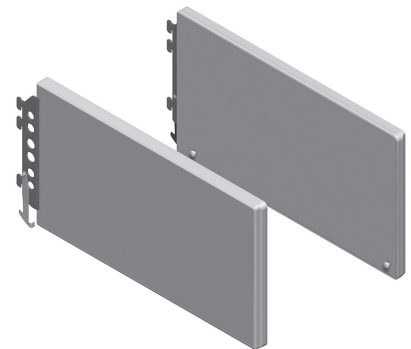
**A** B-Style - End Panels - Full Hgt



**C** E-Style - End Panels - Full Hgt



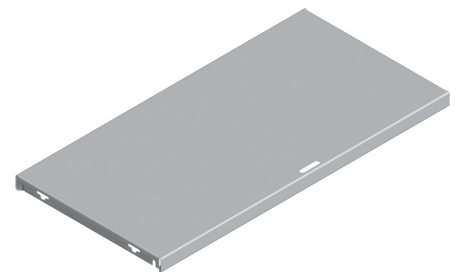
**B** B-Style - End Panels - Half Hgt



**D** E-Style - End Panels - Half Hgt



**F** E-Style Shelf



**E** B-Style Shelf



#2 Phillips Screw Driver



Safety Glass



**G** 8-32 x 3/8 lg  
Pan Head Screw with Serrated  
Washer (E-Style Veneer only)

## Tools Required:

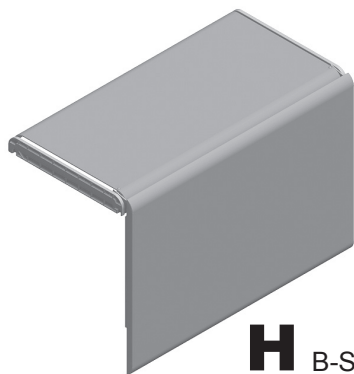
**IMPORTANT: Save these instructions for layout changes.**

HermanMiller

Part no. 1b2lw1 rev E.

© 2013 Herman Miller, Inc. Zeeland, Michigan. Printed in the U.S.A.  
© Herman Miller and Canvas Office Landscape are among the registered trademarks of Herman Miller, Inc.

Illustrations and specifications are based on the latest product information available at the time of publication.  
The right is reserved to make changes in design and specifications at any time, without notice, and also to discontinue products.



**H** B-Style Overhead Door Assy



**I** E-Style Overhead Door Assy



### **WARNING**

Tighten all screws. Failure to do so may cause product damage or personal injury or both.

## **1. End Panel Installation**

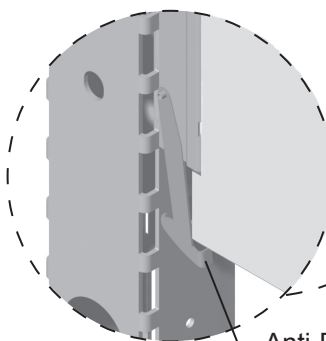
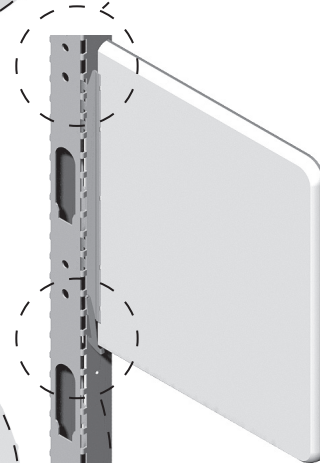
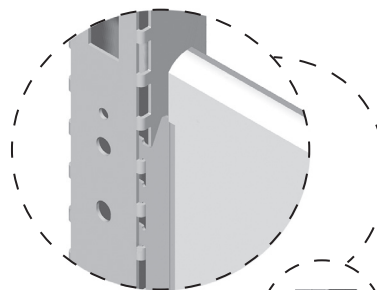
1. If installing Flipper Door Unit under another Flipper Unit or Shelf, allow 1 1/2" vertical clearance between products for flipper door movement.



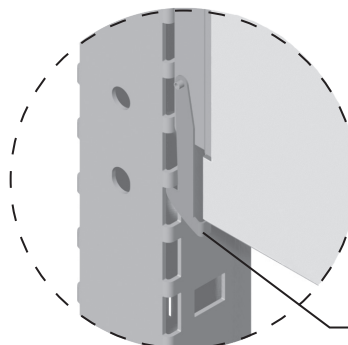
### **WARNING**

Prior to installation, rotate Anti-Dislodgement clip into position shown. Note that this may require a rotation of about 180 degrees from the position that the clips are shipped in. Failure to rotate clip will not allow product to be installed.

2. Insert hanger clips into hanger frame slots making sure Anti-Dislodgement clip is oriented as shown.
3. Rotate Anti-Dislodgement clip until it fits into slot and hanger clip is fully seated in hanger frame. Lift up on the end panel to verify that it is engaged properly.
4. Repeat for opposite end panel at equal height.
5. To remove End Panels, reverse steps 2 & 3. A flat bladed screwdriver may be used to disengage Anti-Dislodgement clip from hanger frame.



Anti-Dislodgement Clip



Anti-Dislodgement Clip fully seated

**HermanMiller**

Part no. 1b2lw1 rev E.

© 2013 Herman Miller, Inc. Zeeland, Michigan. Printed in the U.S.A.  
 ® **HermanMiller** and Canvas Office Landscape are among the registered trademarks of Herman Miller, Inc.

Illustrations and specifications are based on the latest product information available at the time of publication. The right is reserved to make changes in design and specifications at any time, without notice, and also to discontinue products.

## 2. Shelf Installation



### WARNING

For **E-Style Veneer Flipper Doors and Flipper Units**, replace existing shelf mounting screws with provided sems screws (screw with built in serrated washer). Failure to comply may allow shelf to fall causing damage and/or personal injury.

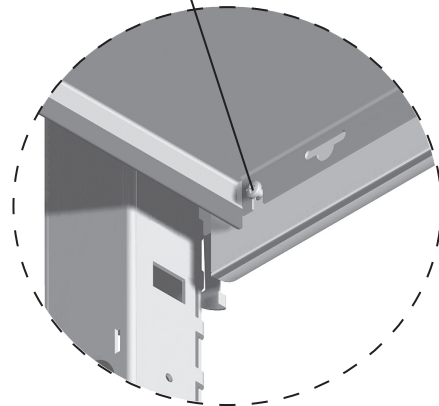
1. Install shelf (E) or (F) onto End Panels by engaging vertical slots in shelf over mounting screws (G) or Sems screw (H) for E-style Veneer Flippers or Flipper units.

2. Make sure Shelf is fully seated on mounting screws.

3. Tighten all shelf mounting.



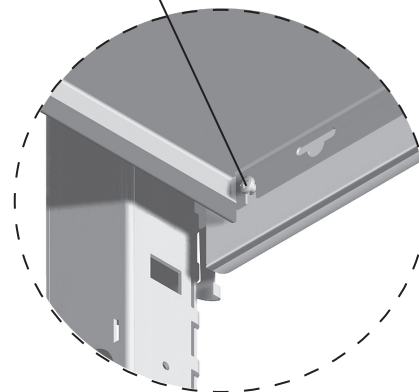
SEMS screws



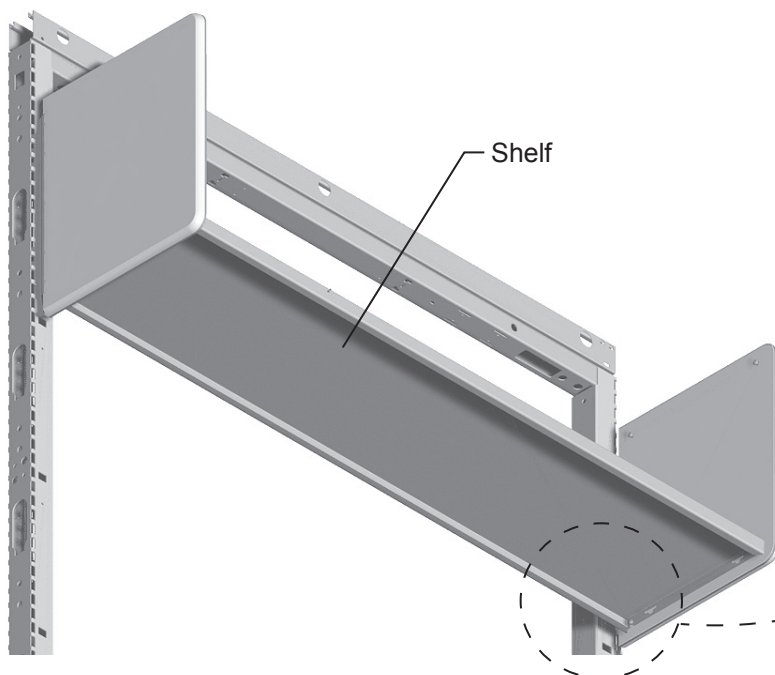
For **E-Style Veneer Flipper Doors and Flipper units**



Mounting screws




For All other Flipper Doors and Flipper Units



**HermanMiller**

Part no. 1b2lw1 rev E.

© 2013 Herman Miller, Inc. Zeeland, Michigan. Printed in the U.S.A.  
©  **HermanMiller** and Canvas Office Landscape are among the registered trademarks of Herman Miller, Inc.

Illustrations and specifications are based on the latest product information available at the time of publication.  
The right is reserved to make changes in design and specifications at any time, without notice, and also to discontinue products.

---

### 3. Flipper Door Unit Installation

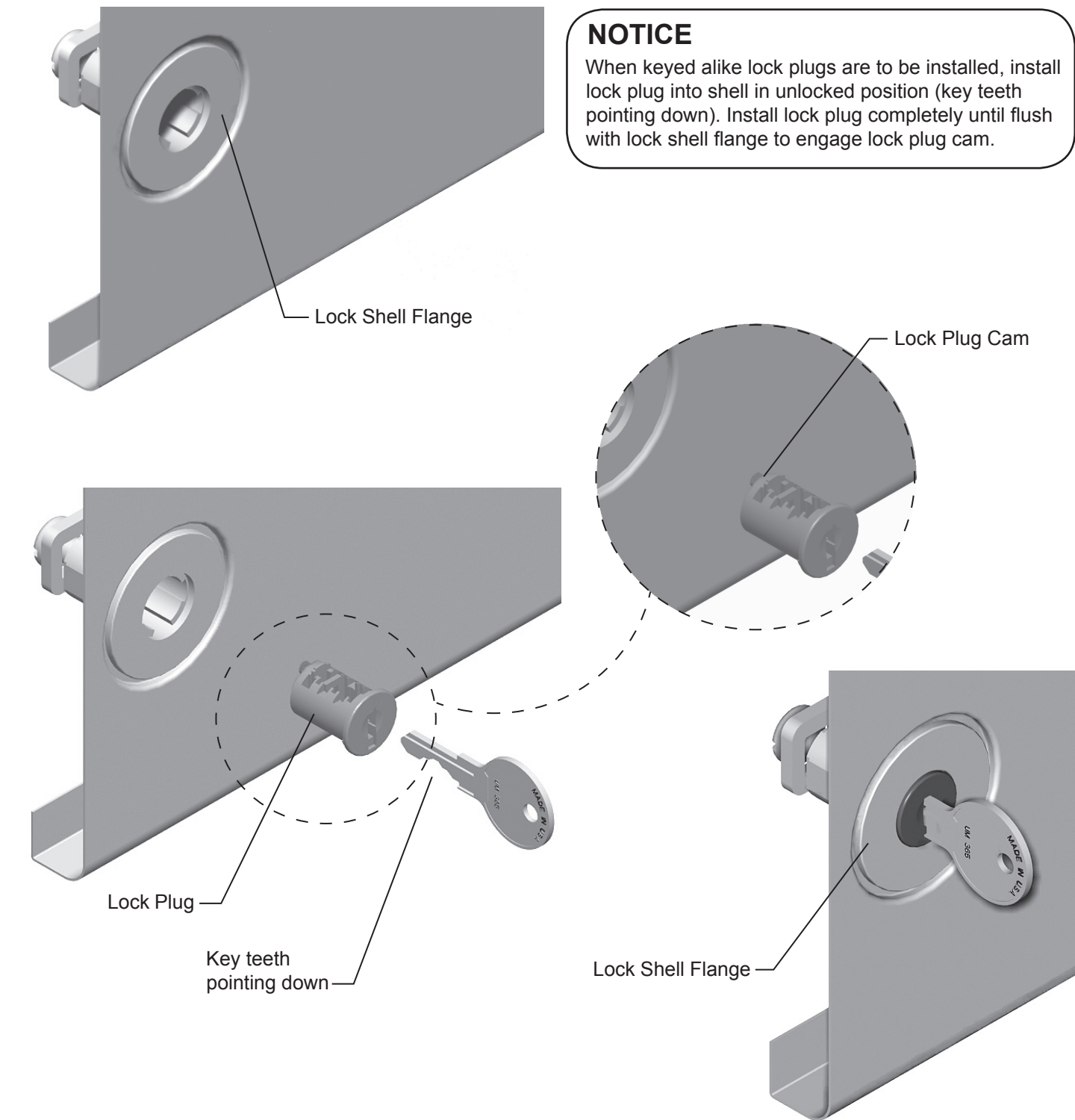
1. With Door/Cover Assembly in open position, place rear slots in door guides over rear mounting screws.
2. Slide Door/Cover Assembly back until front slots in Door Glides drop over front mounting screws.
3. Make sure Door/Cover Assembly is fully seated onto mounting screws. Tighten all screws.



#### NOTICE

If this product is reconfigured or moved, the above steps should be reversed. A fully assembled flipper unit should never be removed from the frame or damage to the gear rod assembly will occur.

# 4. Flipper Door Lock Installation



---

## **Disassembly and Recycling:**

### **Materials Identification and Segregation:**

Where possible, plastic components are marked with ASTM recycling codes. Use these codes to identify material type for recycling. Non marked components should be treated as mixed plastic. Ferrous metals can be identified using a small magnet for recycling. Non-ferrous metals should be separated and recycled separately.

To disassemble product, reverse the above installation steps.