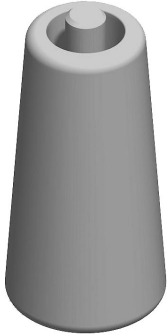




# Canvas Office Landscape® Open Base Retrofit Kit Installation and Disassembly for Recycling Instructions

## Parts Included:



**A** Glide (2)

## Tools Required:



Safety Glass

**Note: Remove Wall Frame from office before installation. See product installation instructions Note read back to front to disassemble.**

## Assembly Instructions:

1



1. Remove Base Cover Glides from Glide Stems.

**IMPORTANT: Save these instructions for layout changes.**

HermanMiller

Part no. 1b2t8t rev C.

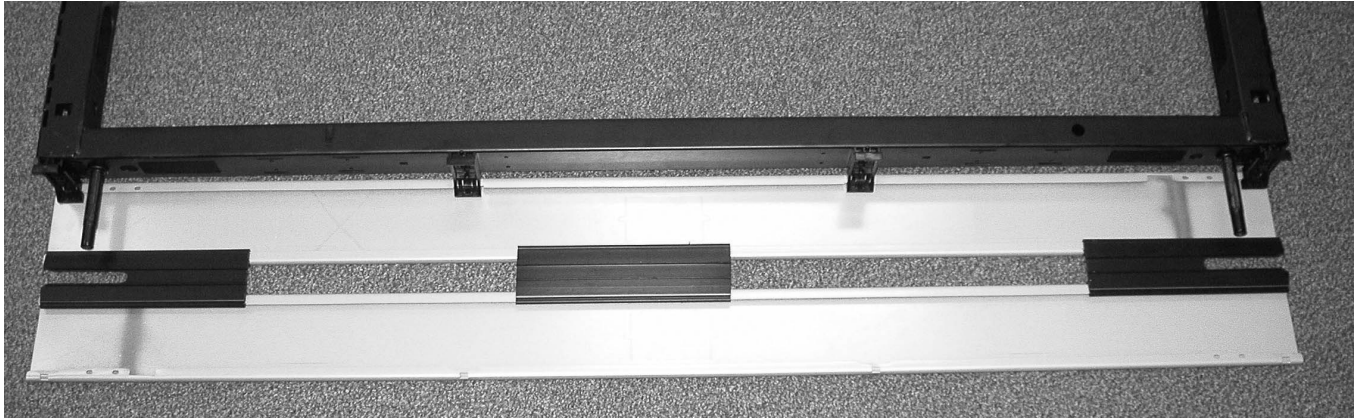
© 2013 Herman Miller, Inc. Zeeland, Michigan. Printed in the U.S.A.

© **HermanMiller** and Canvas Office Landscape are among the registered trademarks of Herman Miller, Inc.

Illustrations and specifications are based on the latest product information available at the time of publication.

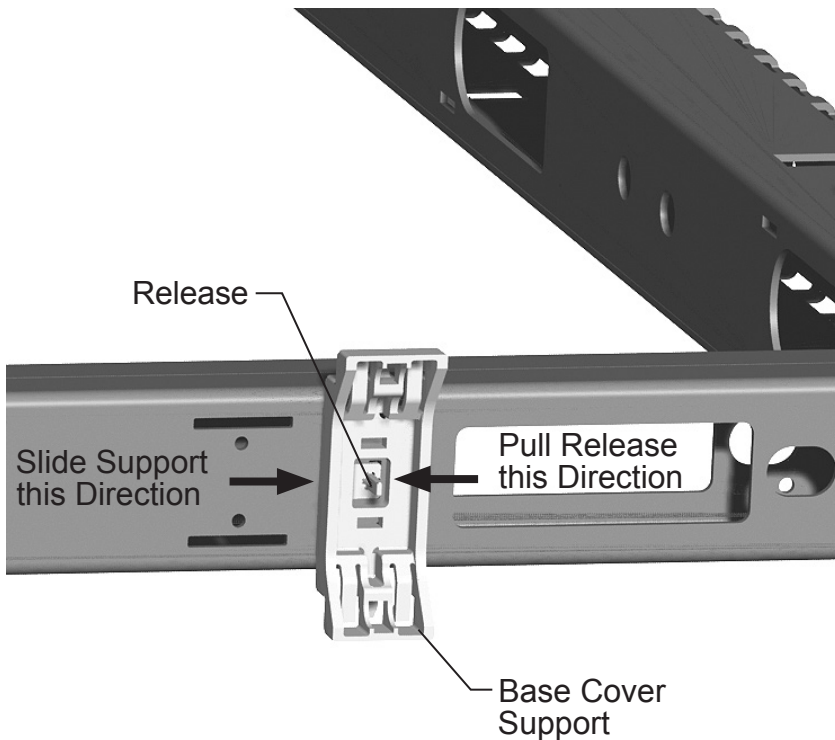
The right is reserved to make changes in design and specifications at any time, without notice, and also to discontinue products.

2



1. Detach Base Covers and remove from Frame.

3




1. Remove Base Cover Supports by depressing Release and sliding back and out from Frame.

**HermanMiller**

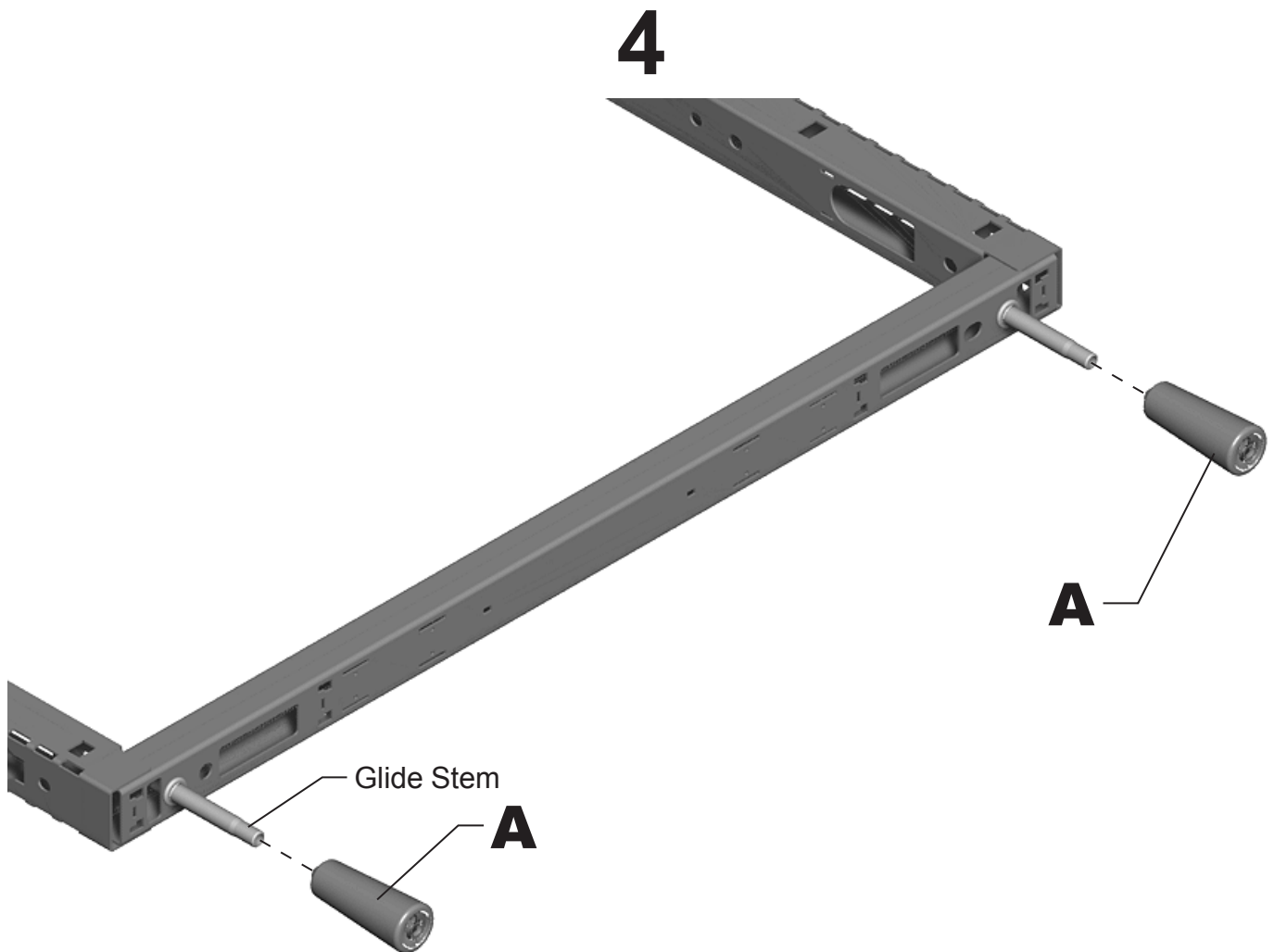
Part no. 1b2t8t rev C.

© 2013 Herman Miller, Inc. Zeeland, Michigan. Printed in the U.S.A.

©  **HermanMiller** and Canvas Office Landscape are among the registered trademarks of Herman Miller, Inc.

Illustrations and specifications are based on the latest product information available at the time of publication.

The right is reserved to make changes in design and specifications at any time, without notice, and also to discontinue products.



1. Turn Open Frame Glides into Glide Stems.
2. Install Frame to Office. See product installation instructions to assemble.

## **Disassembly for Recycling:**

## **Materials Identification and Segregation:**

Where possible, plastic components are marked with ASTM recycling codes. Use these codes to identify material type for recycling. Non marked components should be treated as mixed plastic. Ferrous metals can be identified using a small magnet for recycling. Non-ferrous metals should be separated and recycled separately.

To disassemble product, reverse the above installation steps.