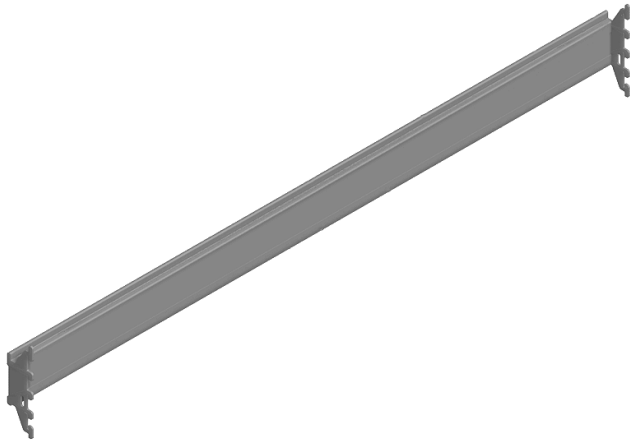


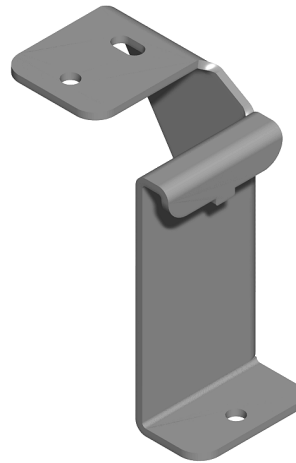


Canvas Office Landscape® Work Surface Support Rail Installation and Disassembly for Recycling Instructions

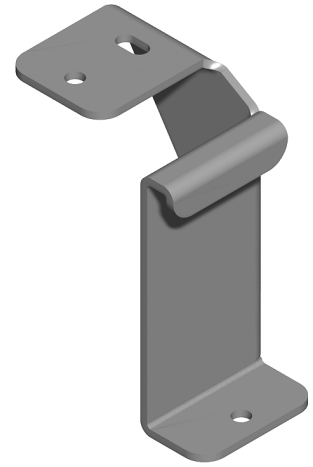
Parts Included:



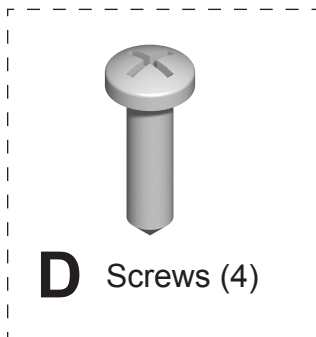
A Support Rail



B Work Surface
Support



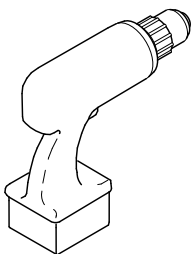
C Work Surface
Support



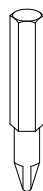
D Screws (4)

Hardware Pack

Tools Required:



Power Driver



#2 Phillips Bit



Safety Glass

IMPORTANT: Save these instructions for layout changes.

HermanMiller

Part no. 1b3299 rev E.

© 2013 Herman Miller, Inc. Zeeland, Michigan. Printed in the U.S.A.

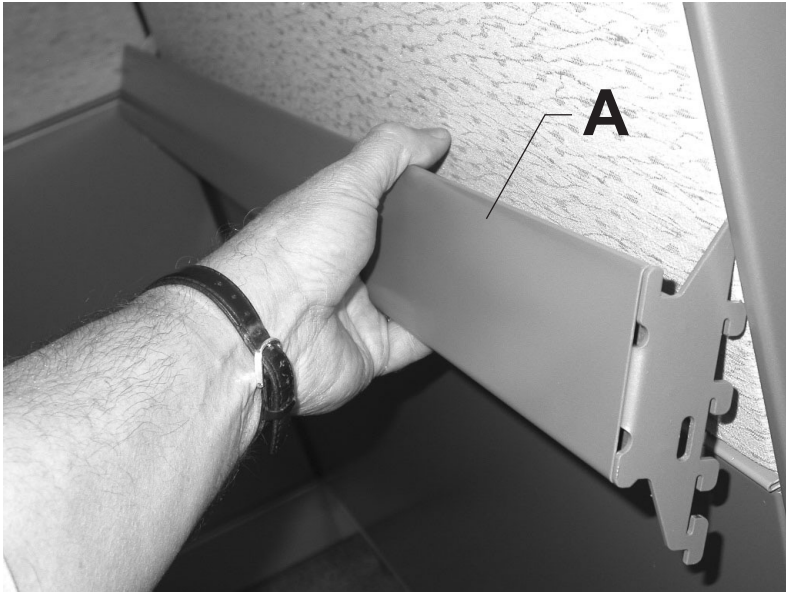
© **HermanMiller** and Canvas Office Landscape are among the registered trademarks of Herman Miller, Inc.

Illustrations and specifications are based on the latest product information available at the time of publication.

The right is reserved to make changes in design and specifications at any time, without notice, and also to discontinue products.

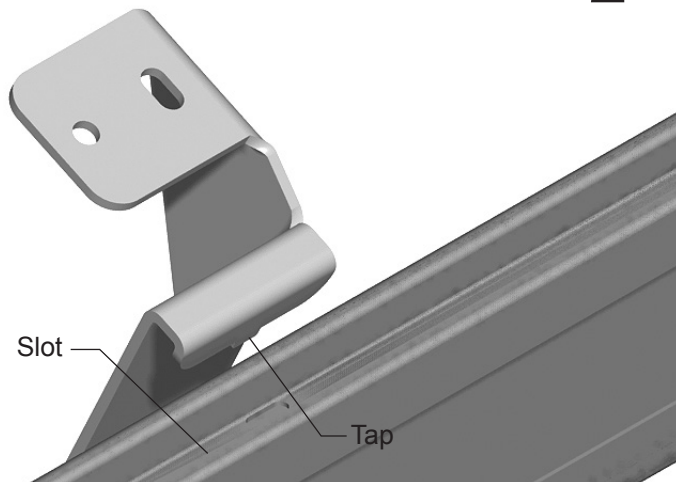
Assembly Instructions:

1



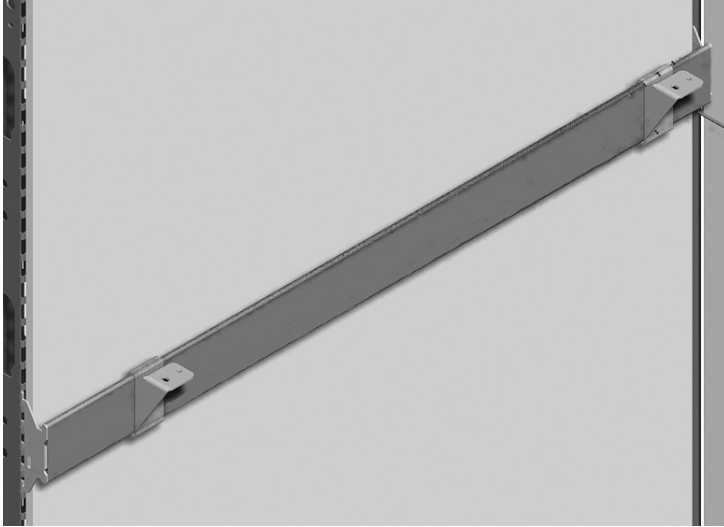
1. Tilt Support Rail (A). Insert Top teeth on End Brackets into slots in frame at approximate desired height. Let Support Rail swing down. Push down on Support Rail. Make sure teeth on End Brackets fully engage into slots in frame.

2



1. Tilt Work Surface Support with Tab (B). Insert Tab into slot in Rail closest to back of work surface. Let Support swing down.

3



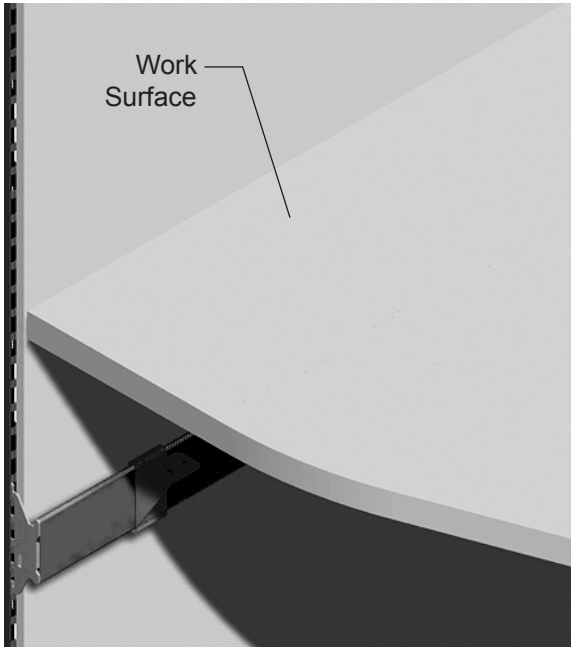
1. Assemble Work Surface Support (C) to Support Rail.

4

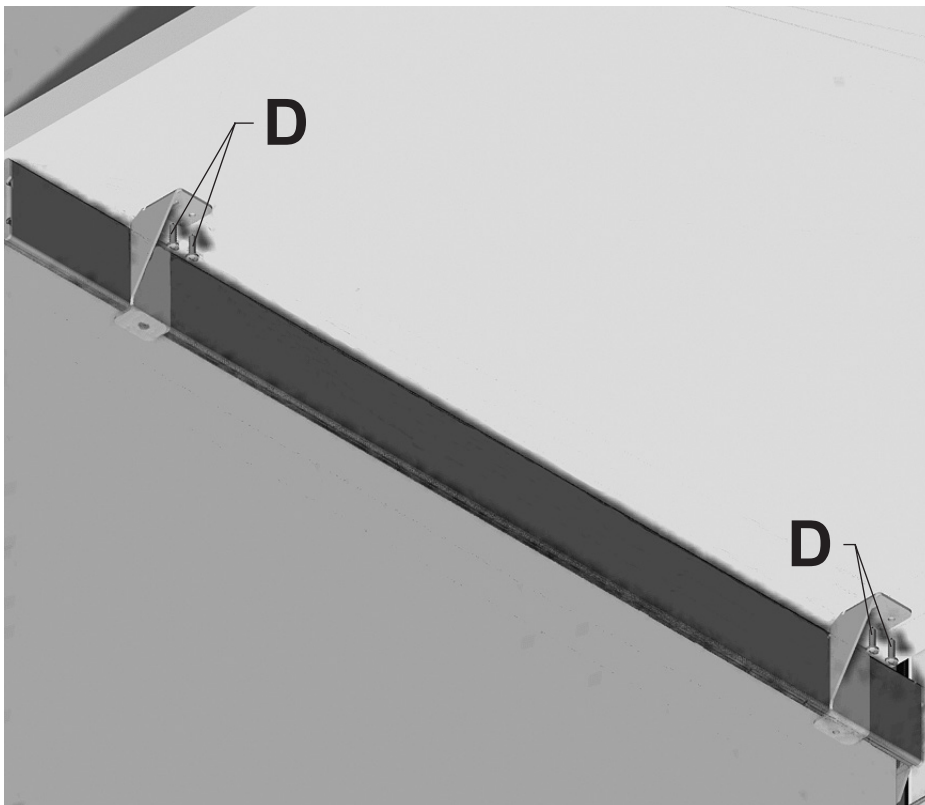


1. Measure from floor to top of Work Surface Support. Adjust Support Rail to desired height.

5



1. Set Work Surface onto Work Surface Supports.
2. Align back holes in Work Surface with holes in rear Work Surface Support.
3. Slide front Work Surface Bracket along Support Rail until holes align.
4. Install 4 Screws (D).



Disassembly for Recycling:

Materials Identification and Segregation:

Where possible, plastic components are marked with ASTM recycling codes. Use these codes to identify material type for recycling. Non marked components should be treated as mixed plastic. Ferrous metals can be identified using a small magnet for recycling. Non-ferrous metals should be separated and recycled separately.

To disassemble product, reverse the above installation steps.