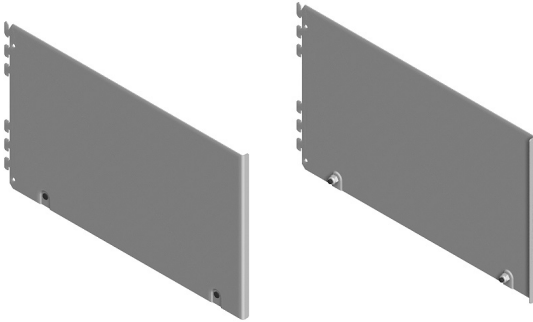
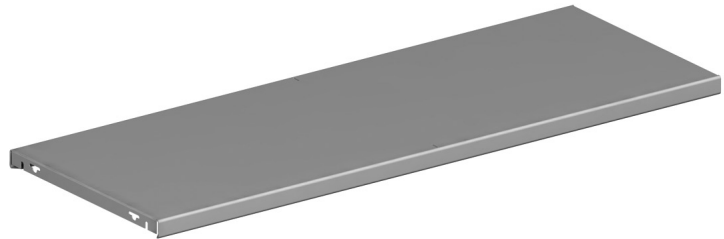





Parts Included:



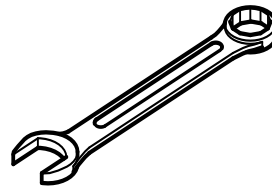
A End Panel Assemblies



B Shelf

 **WARNING**
Tighten all screws. Failure to do so may cause product damage or personal injury or both.

Tools Required:



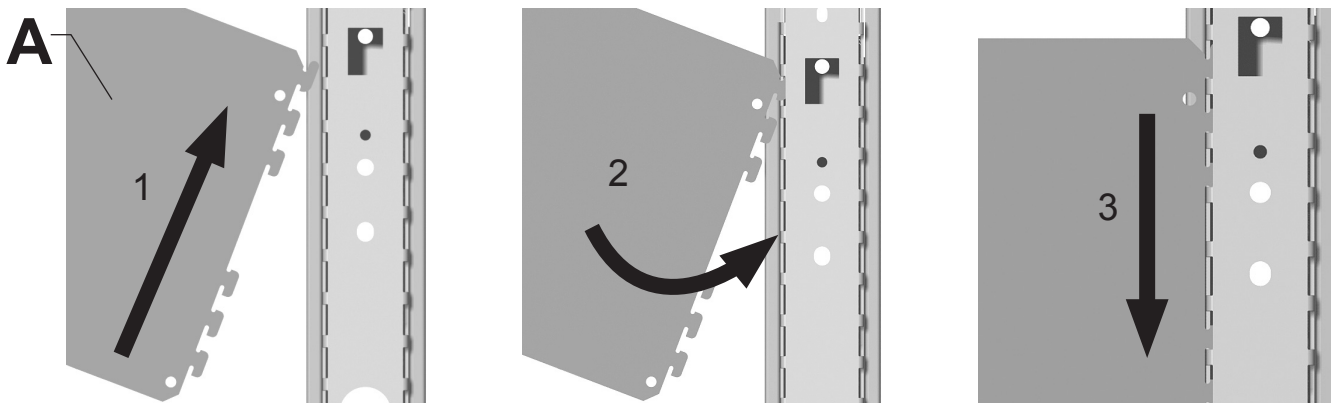
3/8" Wrench



Safety Glass

1 End Panel Installation

1. Install End Panel Assembly (A) by inserting top tab of End Panel into slot on frame. Rotate End Panel toward frame until tabs insert into slots. Lower End Panel until tabs engage in frame.

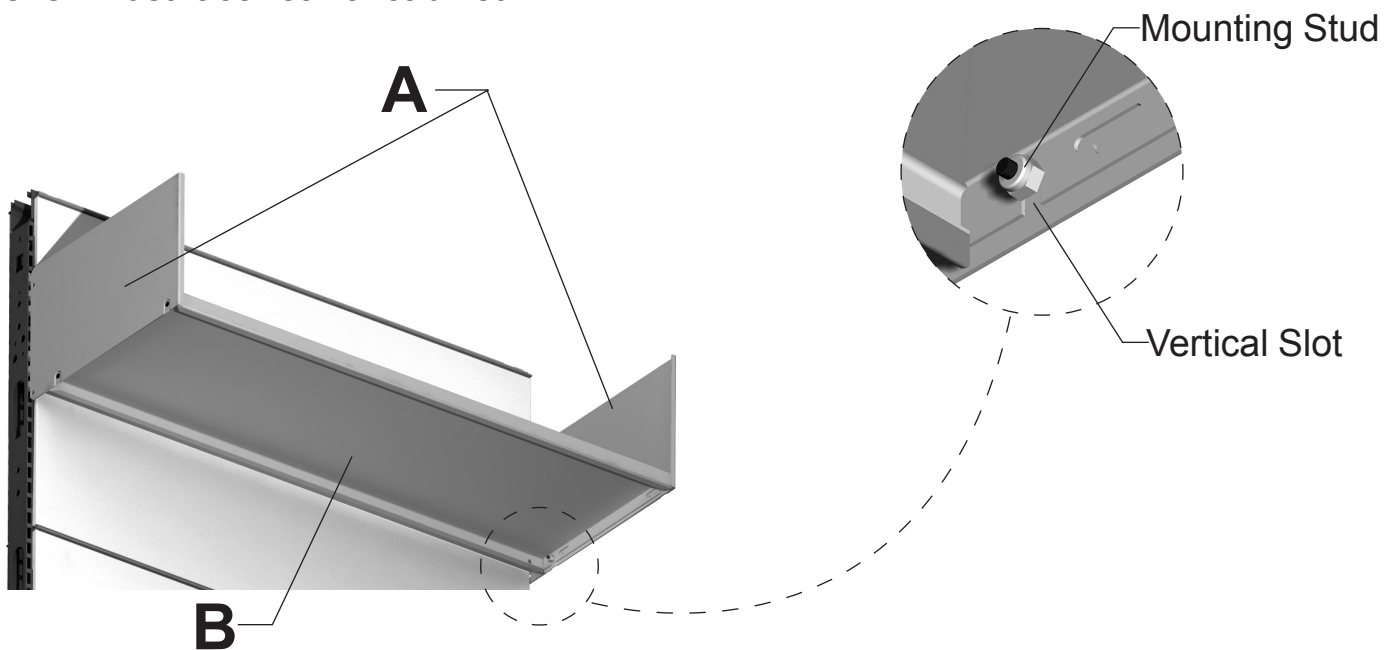


2. Repeat for opposite End Panel at equal height.

IMPORTANT: Save these instructions for layout changes.

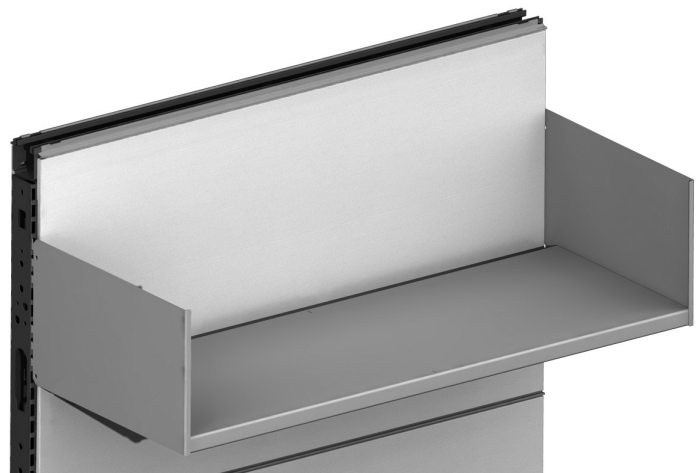
2 Shelf Installation

1. Install shelf (B) on End Panels (A) by engaging vertical slots over mounting studs in End Panels. Tooling hole in face of shelf must face rear of cabinet



2. Make sure Shelf is fully seated on mounting studs.

3. Tighten all nuts.
Do not over tighten.



Completed
Open Shelf Unit

Disassembly and Recycling:

Materials Identification and Segregation:

Where possible, plastic components are marked with ASTM recycling codes. Use these codes to identify material type for recycling. Non marked components should be treated as mixed plastic. Ferrous metals can be identified using a small magnet for recycling. Non-ferrous metals should be separated and recycled separately.

To disassemble product, reverse the above installation steps: