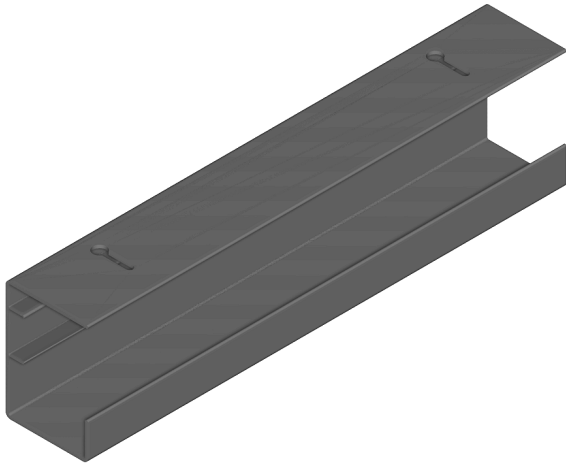


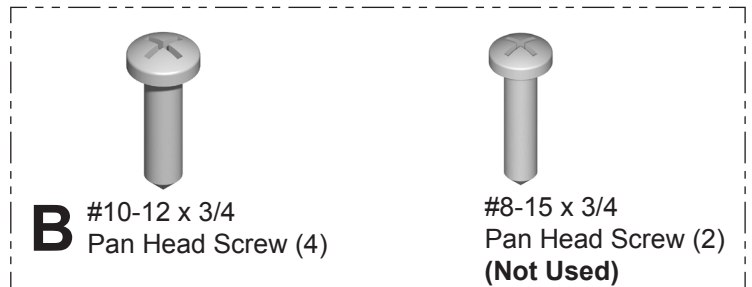


# Canvas Office Landscape® Surface Cable Management Kit Installation and Disassembly for Recycling Instructions

## Parts Included:

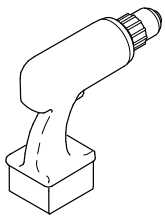


**A** Wire Manager (2)



Hardware Pack

## Tools Required:



Power Driver



#39 Drill Bit



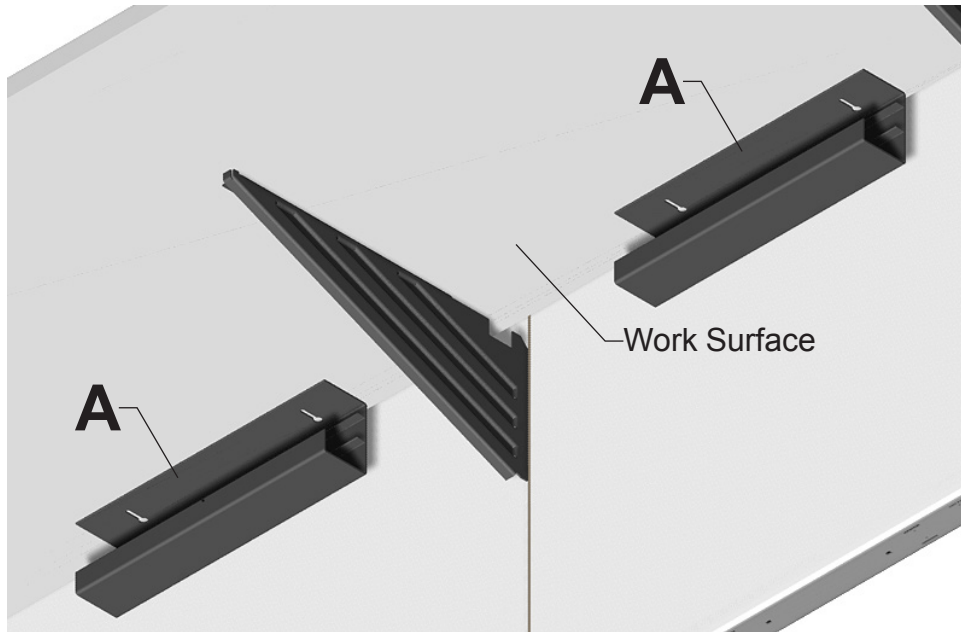
#2 Phillips Bit



Safety Glass

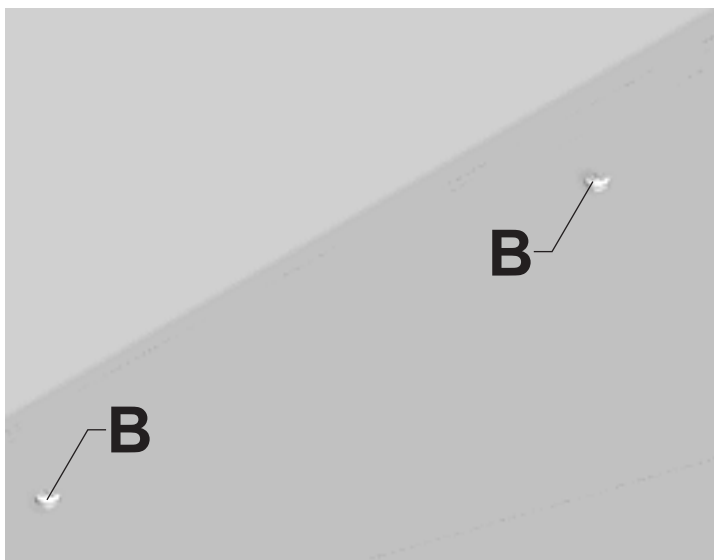
## Assembly Instructions:

# 1



1. Place Wire Manager(A) near back of Work Surface where wire management is required.
2. Mark Screw location on work surface.

# 2




1. Remove Wire manager, drill pilot holes and start screws (B) into holes.  
**Be careful not to drill through Work Surface.**

**HermanMiller**

Part no. 1b42yv rev B.

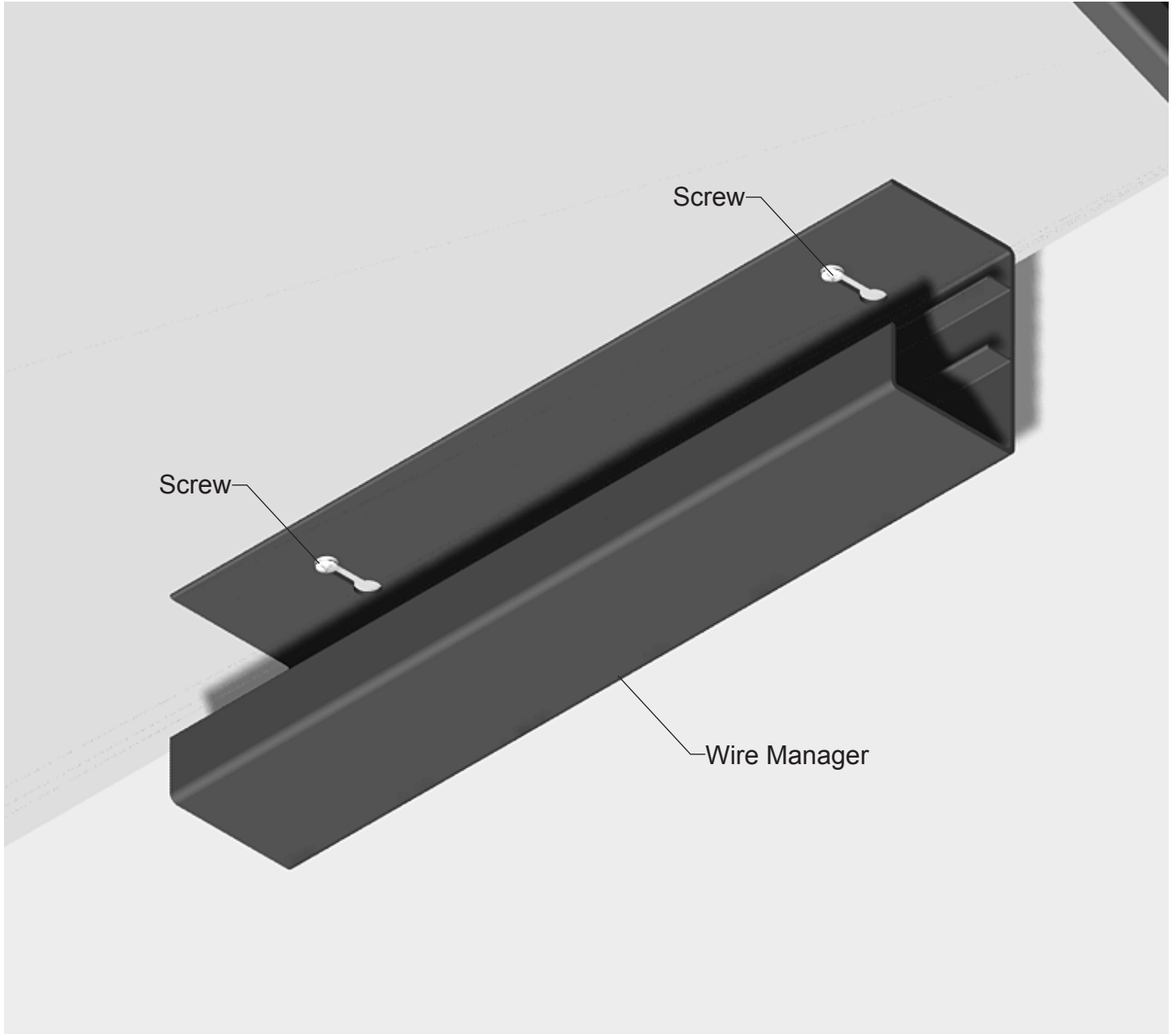
© 2013 Herman Miller, Inc. Zeeland, Michigan. Printed in the U.S.A.

©  HermanMiller and Canvas Office Landscape are among the registered trademarks of Herman Miller, Inc.

Illustrations and specifications are based on the latest product information available at the time of publication.

The right is reserved to make changes in design and specifications at any time, without notice, and also to discontinue products.

# 3



1. Place Wire Manager onto Screws and tighten.

---

## **Disassembly for Recycling:**

### **Materials Identification and Segregation:**

Where possible, plastic components are marked with ASTM recycling codes. Use these codes to identify material type for recycling. Non marked components should be treated as mixed plastic. Ferrous metals can be identified using a small magnet for recycling. Non-ferrous metals should be separated and recycled separately.

To disassemble product, reverse the above installation steps.