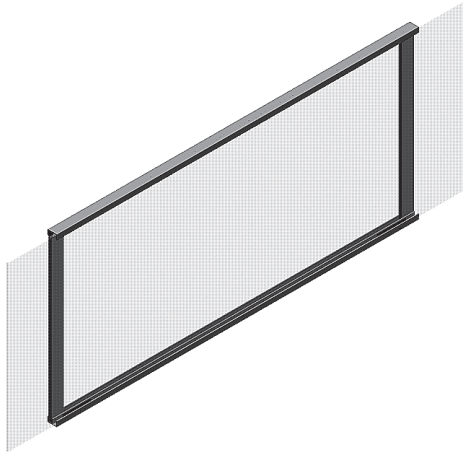


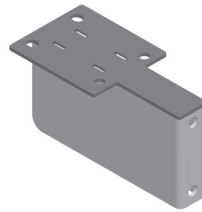


Intent® Interiors Work Surface Screen and Modesty Panel Installation and Disassembly for Recycling Instructions

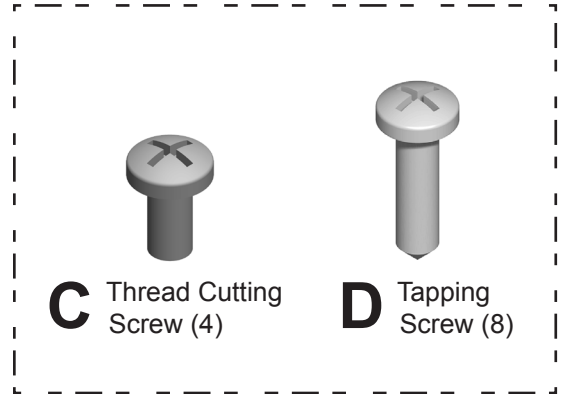
Parts Included:



A Screen



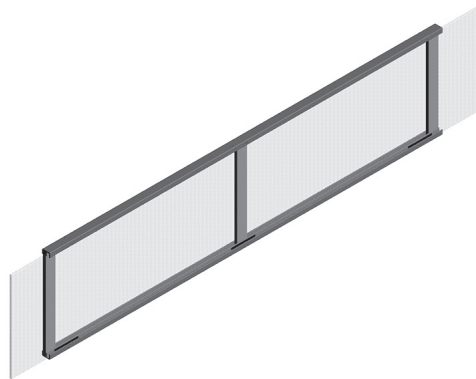
B Screen Support Bracket (2)



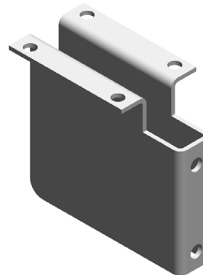
C Thread Cutting Screw (4)

D Tapping Screw (8)

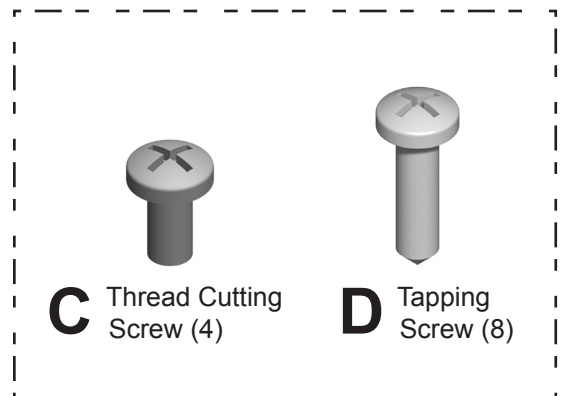
Hardware Pack



A Modesty Panel



B Modesty Support Bracket (2 or 3)

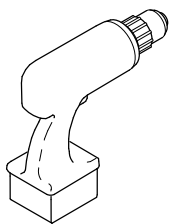


C Thread Cutting Screw (4)

D Tapping Screw (8)

Hardware Pack

Tools Needed:



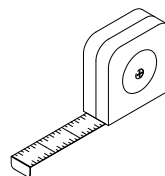
Power Driver



#18 Drill Bit



Phillips Bit




Tape Rule



Safety Glass

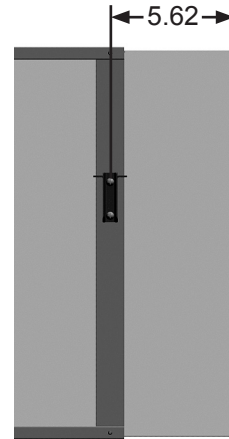
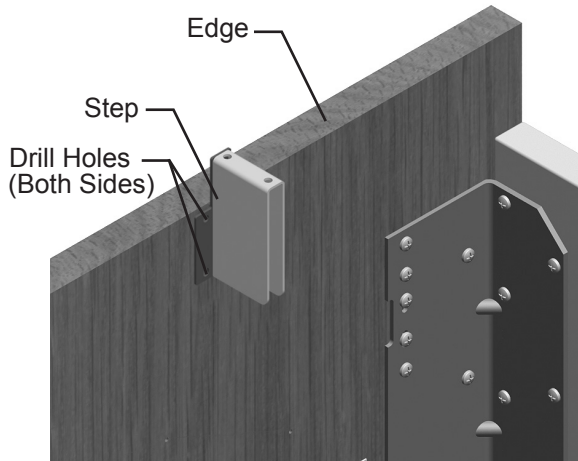
HermanMiller

Part no. 1b4z6d rev C.

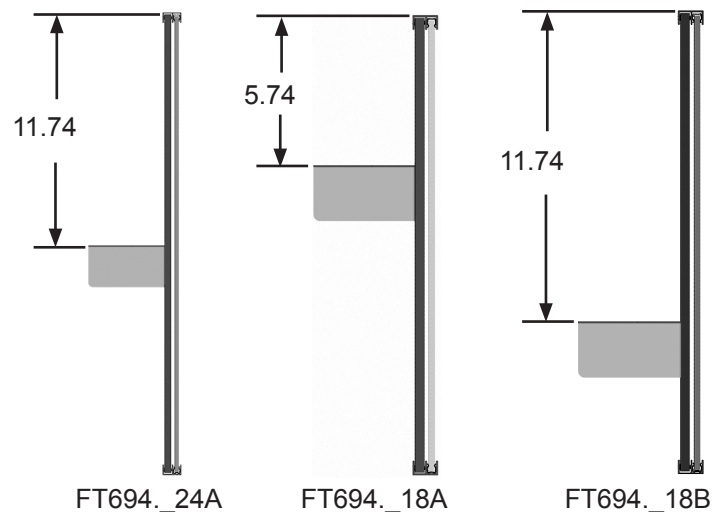
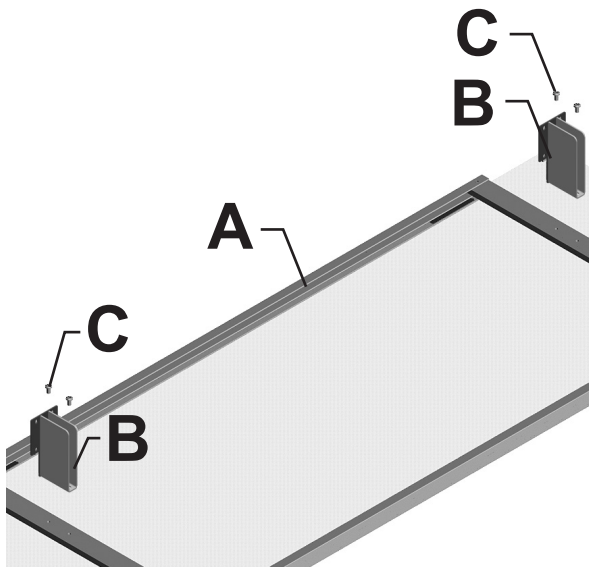
© 2013 Herman Miller, Inc. Zeeland, Michigan. Printed in the U.S.A.
©  Herman Miller and Intent are among the registered trademarks of Herman Miller, Inc.

Illustrations and specifications are based on the latest product information available at the time of publication.
The right is reserved to make changes in design and specifications at any time, without notice, and also to discontinue products.

Screen:



1. Determine where Screen is to be installed onto work surface. Note: Center of Bracket is 5 5/8" from edge of screen.
2. Position one Screen Bracket (B) onto Work Surface.
3. Using Screen Bracket as template, drill four 1/8" pilot holes 1/2" deep.

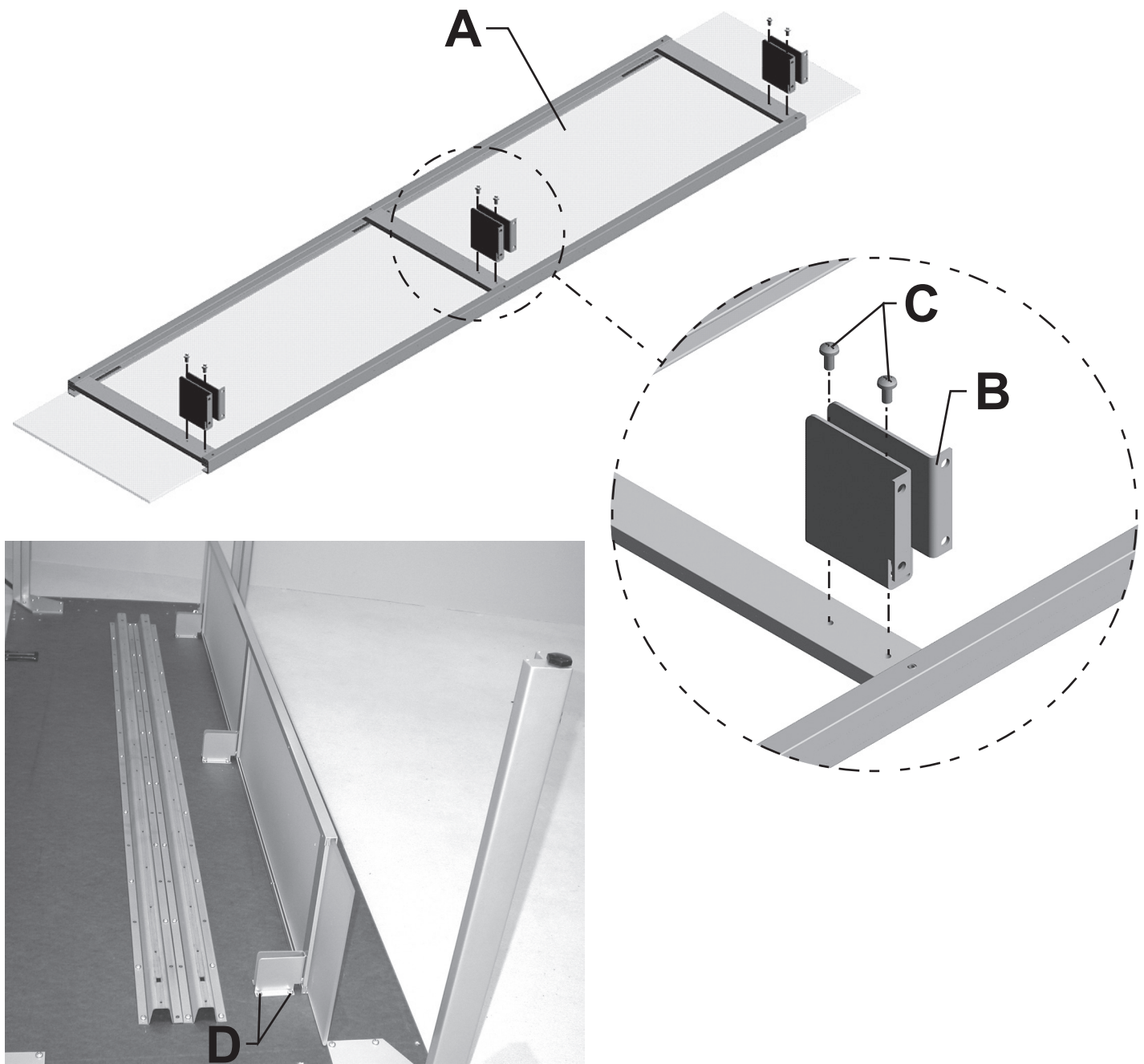


4. Remove Bracket and install onto Screen (A) using 2 Thread Cutting Screws (C). Repeat for remaining Screen Bracket (B). See Bracket locations above.



5. Position Screen onto Work Surface. Install 4 Tapping Screws (D) using Pilot Holes previously drilled.
6. Drill Pilot Holes for other Bracket using Bracket as template and ensuring that step is against edge of Work Surface.
7. Install 4 Tapping Screws (D).

Modesty Panel:




8. Install Modesty Brackets (B) onto Modesty Panel (A) using 2 Thread Cutting Screws (C) per Bracket.

9. Place Modesty Panel onto bottom of Work Surface at desired location.

10. Attach Panel to Surface with 4 Tapping Screws (D) per Bracket.

HermanMiller

Part no. 1b4z6d rev C.

© 2013 Herman Miller, Inc. Zeeland, Michigan. Printed in the U.S.A.
©  Herman Miller and Intent are among the registered trademarks of Herman Miller, Inc.

Illustrations and specifications are based on the latest product information available at the time of publication.
The right is reserved to make changes in design and specifications at any time, without notice, and also to discontinue products.

Disassembly and Recycling:

Materials Identification and Segregation:

Where possible, plastic components are marked with ASTM recycling codes. Use these codes to identify material type for recycling. Non marked components should be treated as mixed plastic. Ferrous metals can be identified using a small magnet for recycling. Non-ferrous metals should be separated and recycled separately.

To disassemble product, reverse steps 10 through 3.