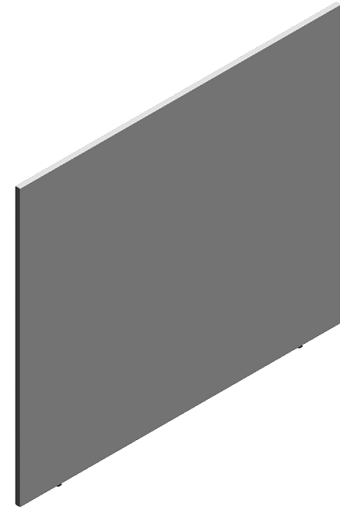


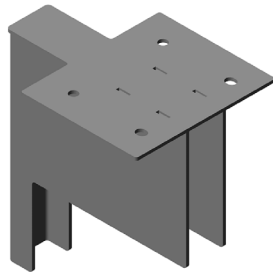


Intent® Furniture Privacy Panel Installation and Disassembly for Recycling Instructions

Parts Included:



A Privacy Panel

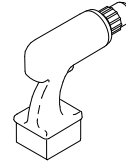


B Mounting Bracket (2)



C Tapping Screw (16)

Tools Needed:



Power Driver

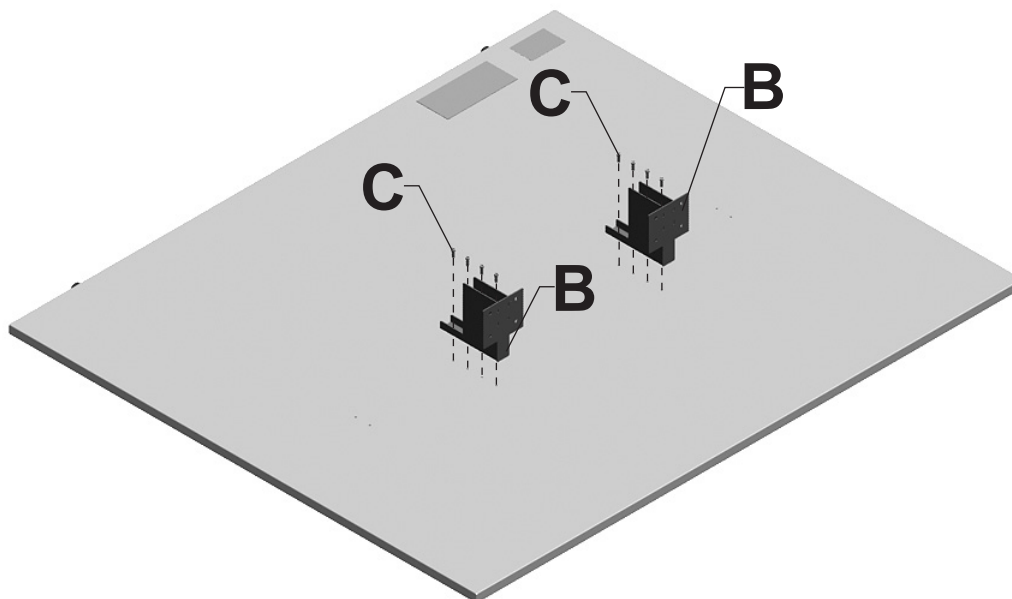


Phillips Bit



Safety Glass


1



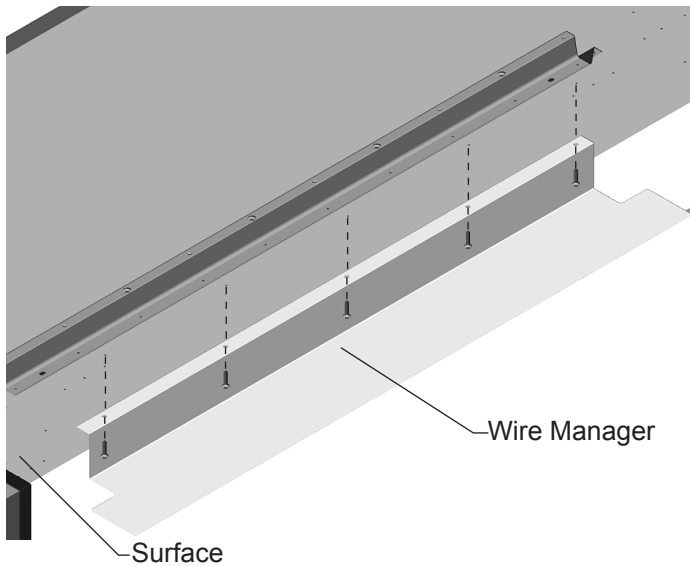
1. Place mounting brackets (B) in position at proper height onto privacy panel (A).
2. Secure brackets to panel with 4 screws (C) per bracket.

HermanMiller

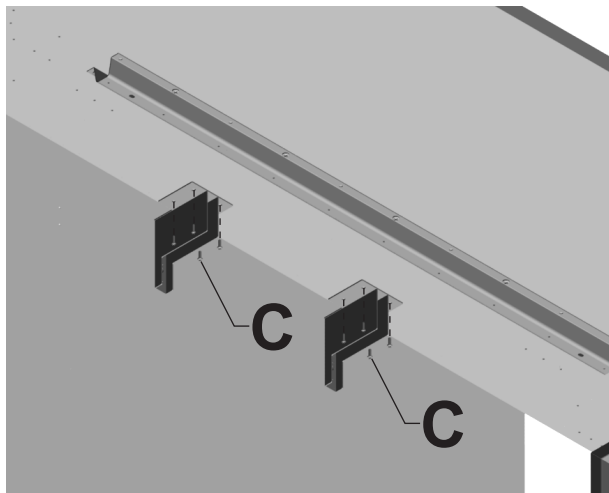
Part no. 1b54fh rev D.

© 2013 Herman Miller, Inc. Zeeland, Michigan. Printed in the U.S.A.
©  HermanMiller and Intent are among the registered trademarks of Herman Miller, Inc.

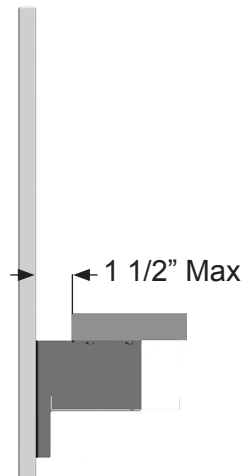
Illustrations and specifications are based on the latest product information available at the time of publication.
The right is reserved to make changes in design and specifications at any time, without notice, and also to discontinue products.



Note: If wire manager is installed under surface, remove before installing privacy panel.

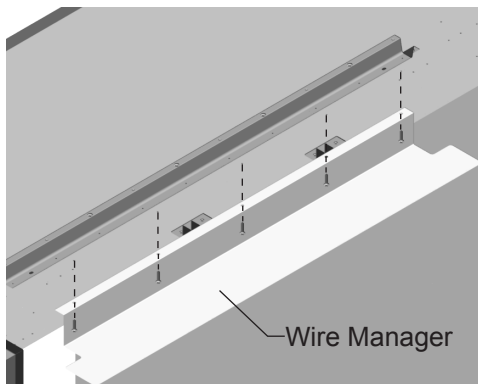


2



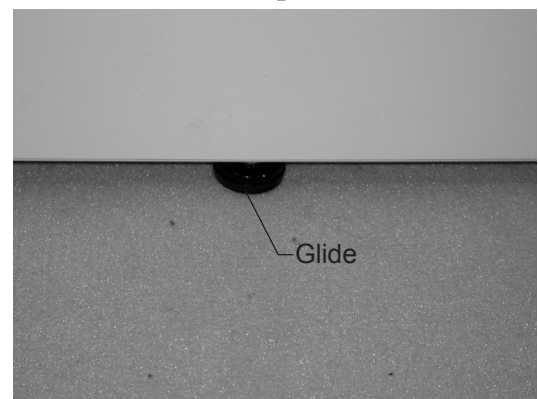
1. Place privacy panel in desired position. Panel should not extend more than 1 1/2" beyond back edge of desk.
2. Drill 1/8" dia pilot holes 1/2" deep.
3. Secure panel to surface with 4 screws (c) per bracket.

3



1. Return or install wire manager to surface.

4



1. Adjust glide as needed to make panel rigid.

HermanMiller

© 2013 Herman Miller, Inc. Zeeland, Michigan. Printed in the U.S.A.
 © HermanMiller and Intent are among the registered trademarks of Herman Miller, Inc.

Illustrations and specifications are based on the latest product information available at the time of publication.
 The right is reserved to make changes in design and specifications at any time, without notice, and also to discontinue products.

Part no. 1b54th rev D.

Disassembly and Recycling:

Materials Identification and Segregation:

Where possible, plastic components are marked with ASTM recycling codes. Use these codes to identify material type for recycling. Non marked components should be treated as mixed plastic. Ferrous metals can be identified using a small magnet for recycling. Non-ferrous metals should be separated and recycled separately.

To disassemble product, reverse the above installation steps: