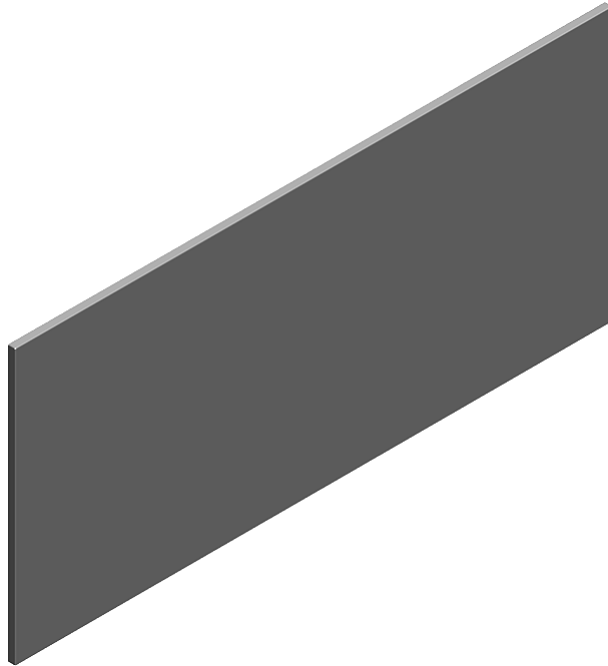


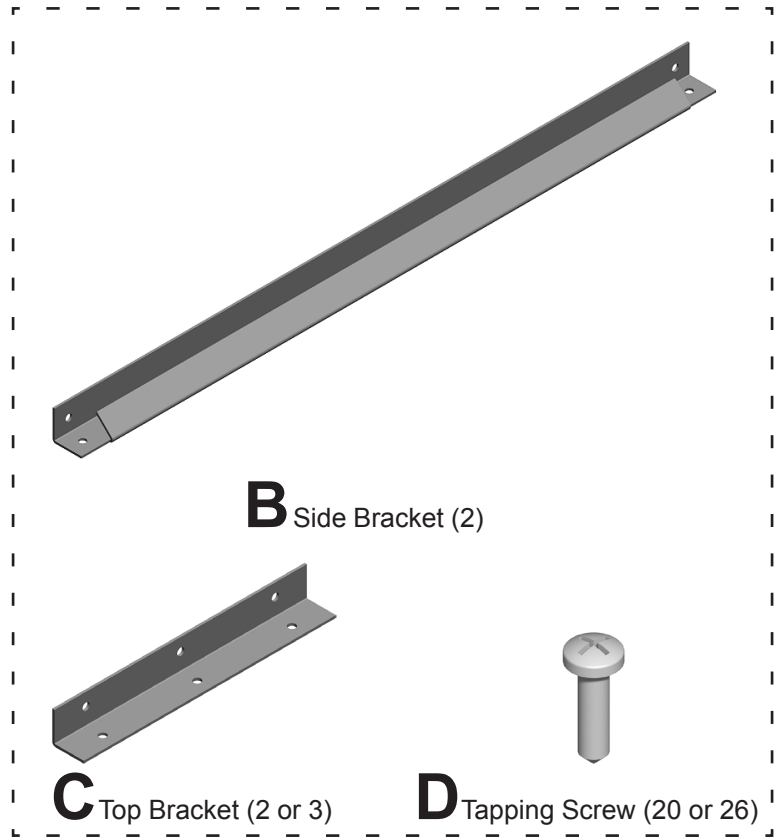


Intent® Furniture modesty Panel Installation and Disassembly for Recycling Instructions

Parts Included:



A Modesty Panel



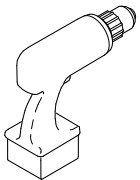
B Side Bracket (2)

C Top Bracket (2 or 3)

D Tapping Screw (20 or 26)

Bracket Kit

Tools Required:



Power Driver



#2 Phillips Bit




Drill Bit



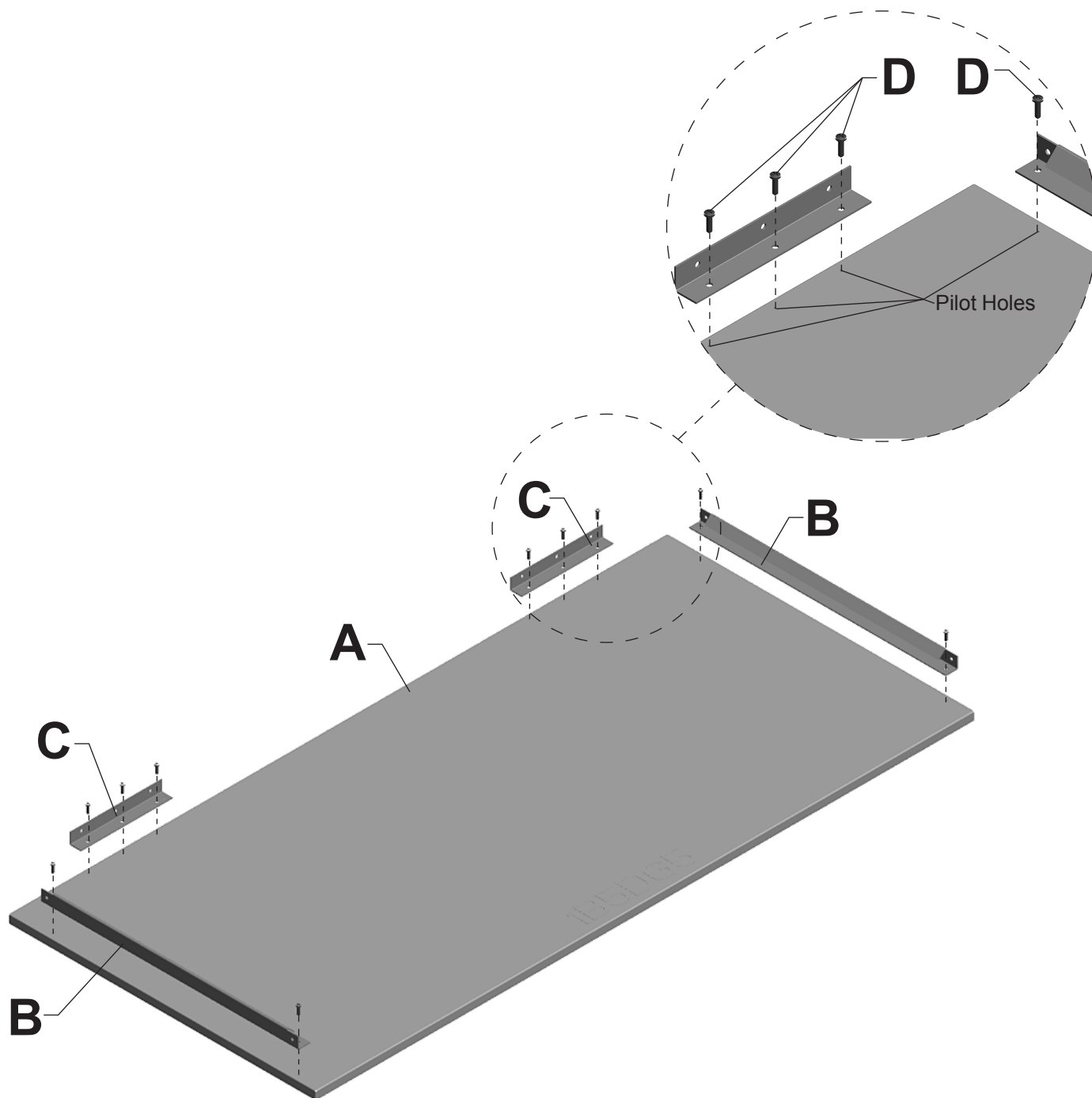
Safety Glass

HermanMiller

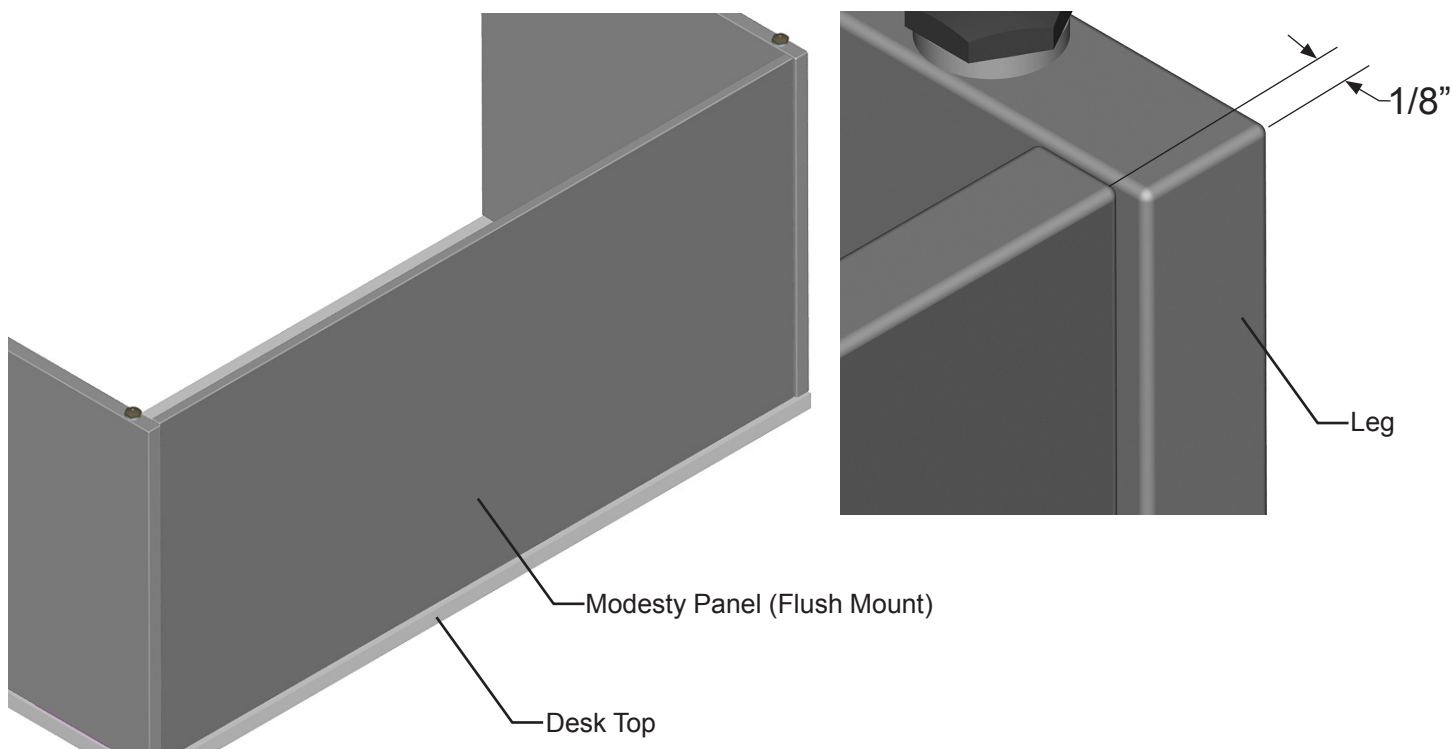
Part no. 1b5pzg rev B.

© 2013 Herman Miller, Inc. Zeeland, Michigan. Printed in the U.S.A.
©  Herman Miller and Intent are among the registered trademarks of Herman Miller, Inc.

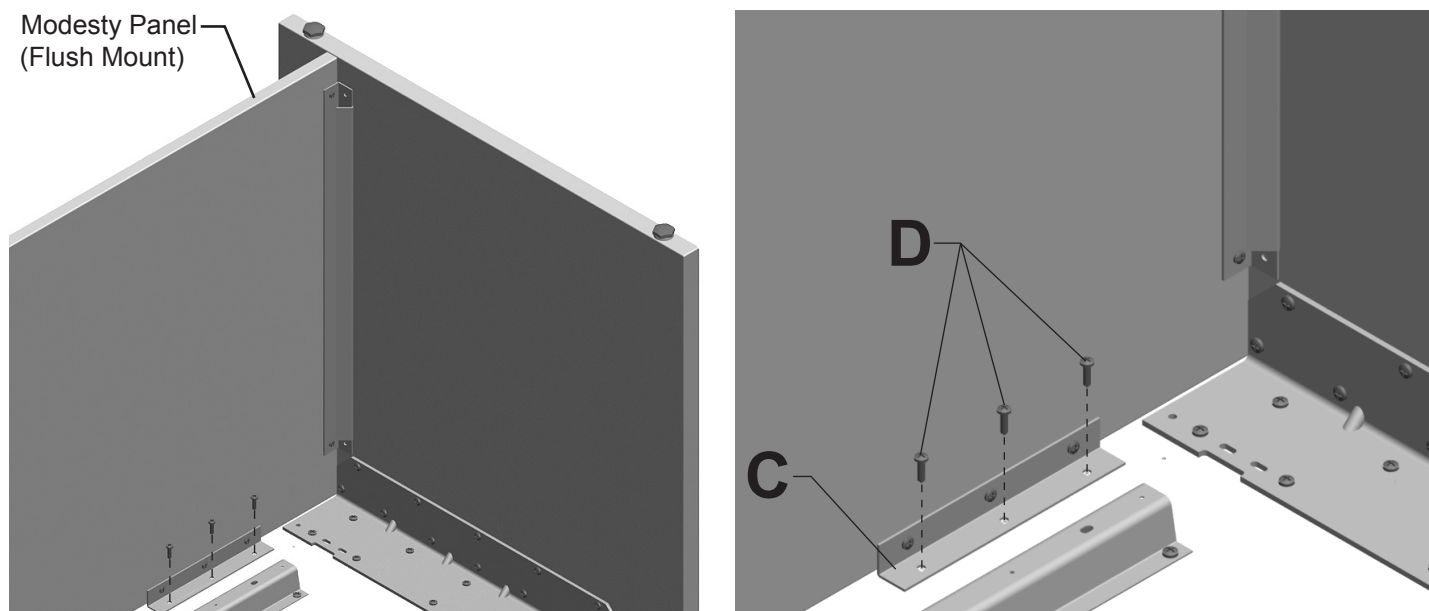
Illustrations and specifications are based on the latest product information available at the time of publication.
The right is reserved to make changes in design and specifications at any time, without notice, and also to discontinue products.

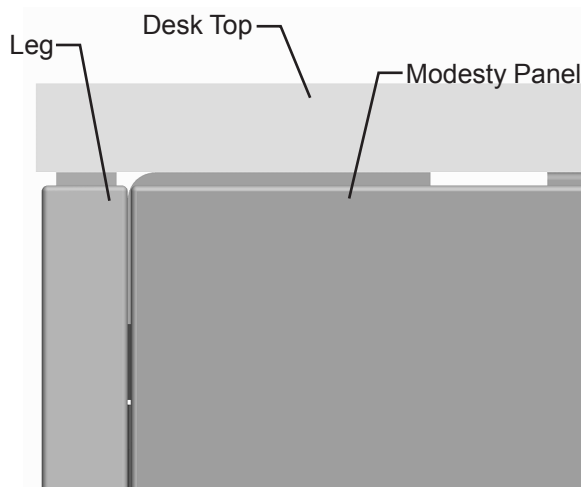


1. Lay Modesty Panel (A) face down.
2. Set Side Brackets (B) and Top Brackets (C) over pilot holes on Panel.
3. Secure Brackets to Panel with Tapping Screws (D).



4. Lay Desk on top.
5. Set Modesty Panel onto Desk Top.
6. Align Top Brackets (C) with pilot holes in Desk Top, either flush or inset.
7. Secure Modesty Panel to Desk Top with Screws (D).

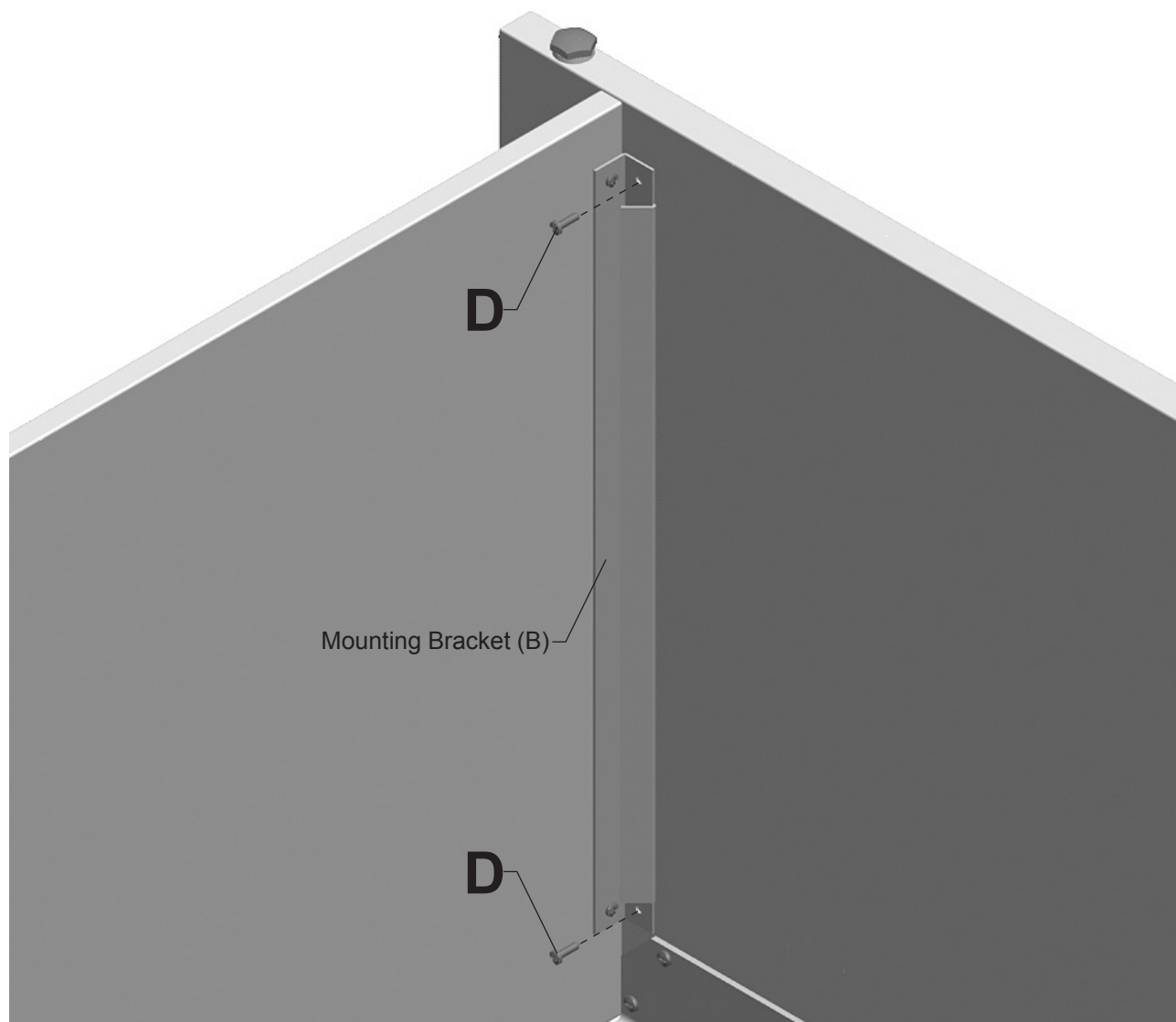




Note: Top of Modesty Panel should be aligned with top of Leg.


8. Using Modesty Panel Mounting Brackets (B) as template drill 1/8" pilot holes 1/2" deep into Leg. 2 Places.

9. Secure Modesty Panel to Leg with Screws (D).



HermanMiller

Part no. 1b5pzg rev B.

© 2013 Herman Miller, Inc. Zeeland, Michigan. Printed in the U.S.A.
 ©  Herman Miller and Intent are among the registered trademarks of Herman Miller, Inc.

Illustrations and specifications are based on the latest product information available at the time of publication.
 The right is reserved to make changes in design and specifications at any time, without notice, and also to discontinue products.

Disassembly and Recycling:

Materials Identification and Segregation:

Where possible, plastic components are marked with ASTM recycling codes. Use these codes to identify material type for recycling. Non marked components should be treated as mixed plastic. Ferrous metals can be identified using a small magnet for recycling. Non-ferrous metals should be separated and recycled separately.

To disassemble product, reverse steps 9 through 1 and also do the following: