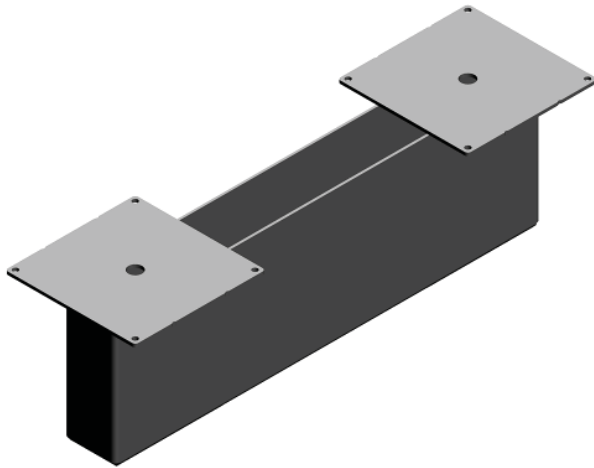


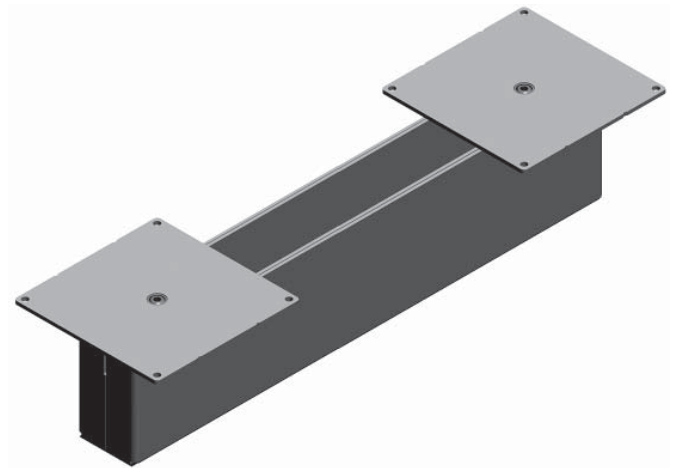


Canvas Office Landscape™ Credenza Surface Support Installation

Parts Included:



A Credenza Surface Support

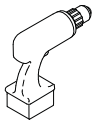


A Adjustable Height Credenza Surface Support



B Pan Head Screw (8)

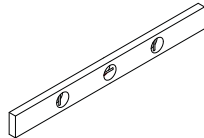
Tool Required:



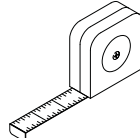
Power Driver



#2 Phillips Bit



Level



Tape Measure



3/16" Hex Drive

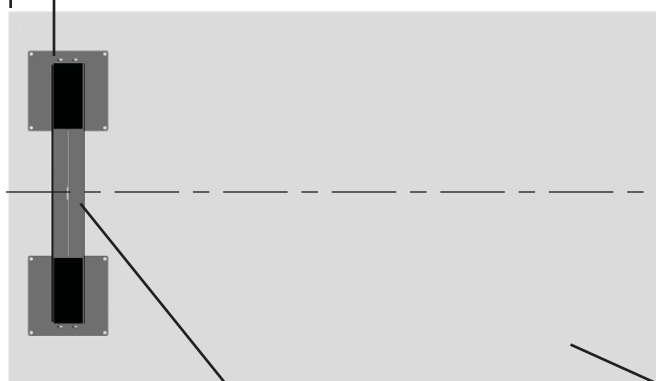
HermanMiller

© 2010 Herman Miller, Inc. Zeeland, Michigan. Printed in the U.S.A.
Part no. 1B6CSV rev B.

™ Herman Miller, Canvas Office Landscape are among the trademarks of Herman Miller, Inc.

Illustrations and specifications are based on the latest product information available at the time of publication.
The right is reserved to make changes in design and specifications at any time, without notice, and also to discontinue products.

2.75" min. - 14" max.



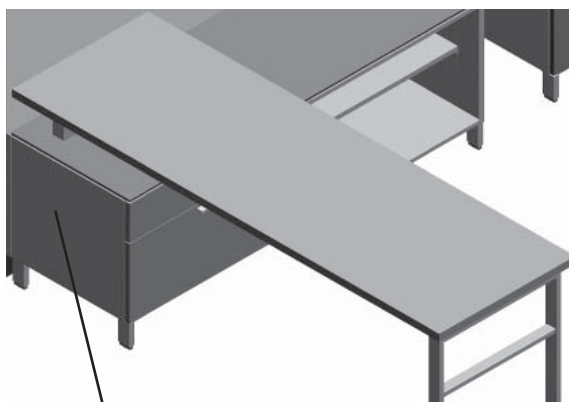
Credenza Surface Support

1. Use the dimensions shown as a guide when positioning Credenza Surface Support onto Work Surface and Storage Unit . (A) Center Support onto Work Surface when used on a peninsula application. (B) Offset Support onto Work Surface when used as table running parallel to frame wall.

Work Surface

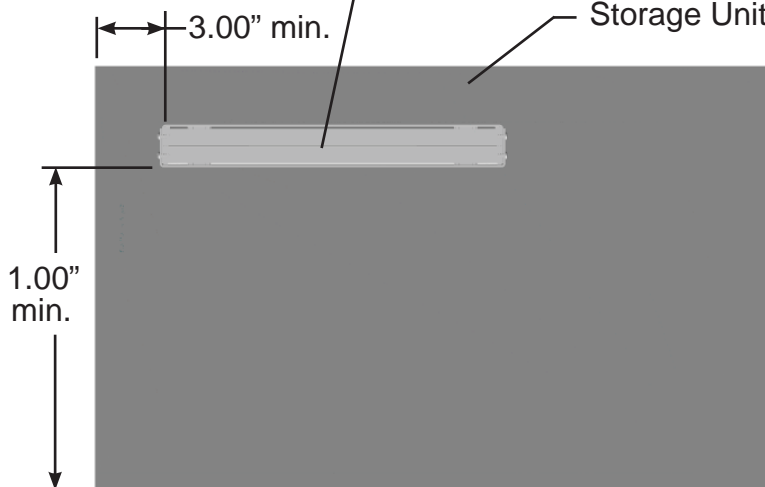
Credenza Surface Support

Storage Unit



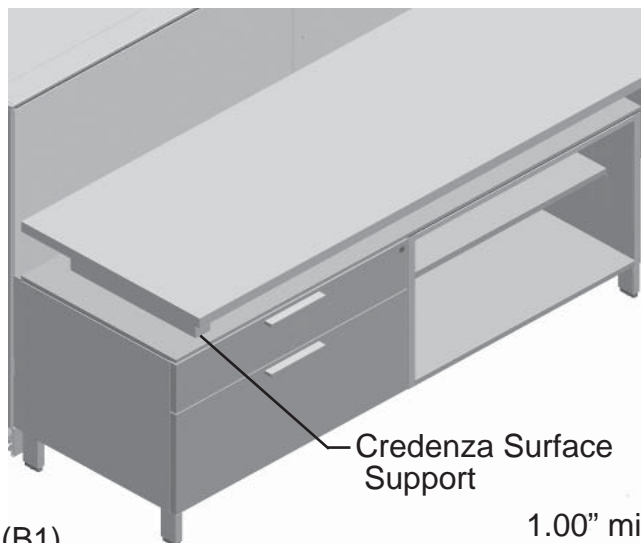
(A1)

Credenza Surface Support



(A2)

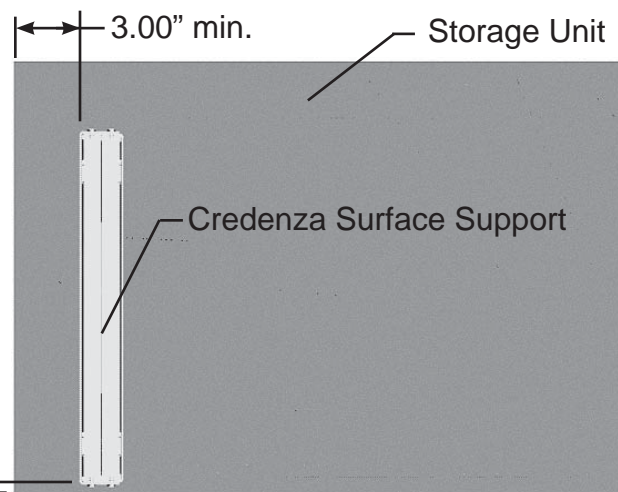
Front Of Storage Unit



(B1)

Credenza Surface Support

1.00" min.




(B2)

Front Of Storage Unit

HermanMiller

© 2010 Herman Miller, Inc. Zeeland, Michigan. Printed in the U.S.A.

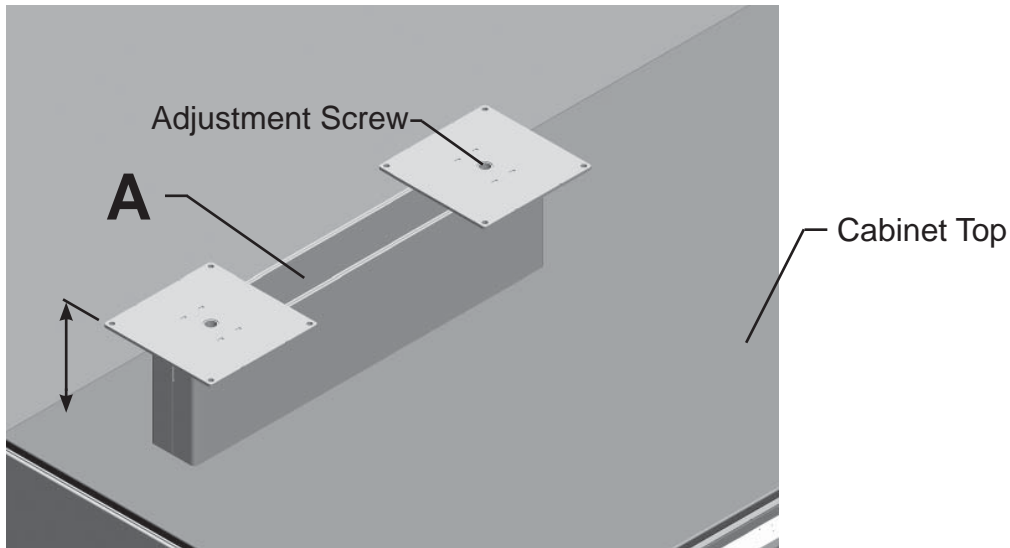
Part no. 1B6CSV rev B.

™  Herman Miller, Canvas Office Landscape are among the trademarks of Herman Miller, Inc.

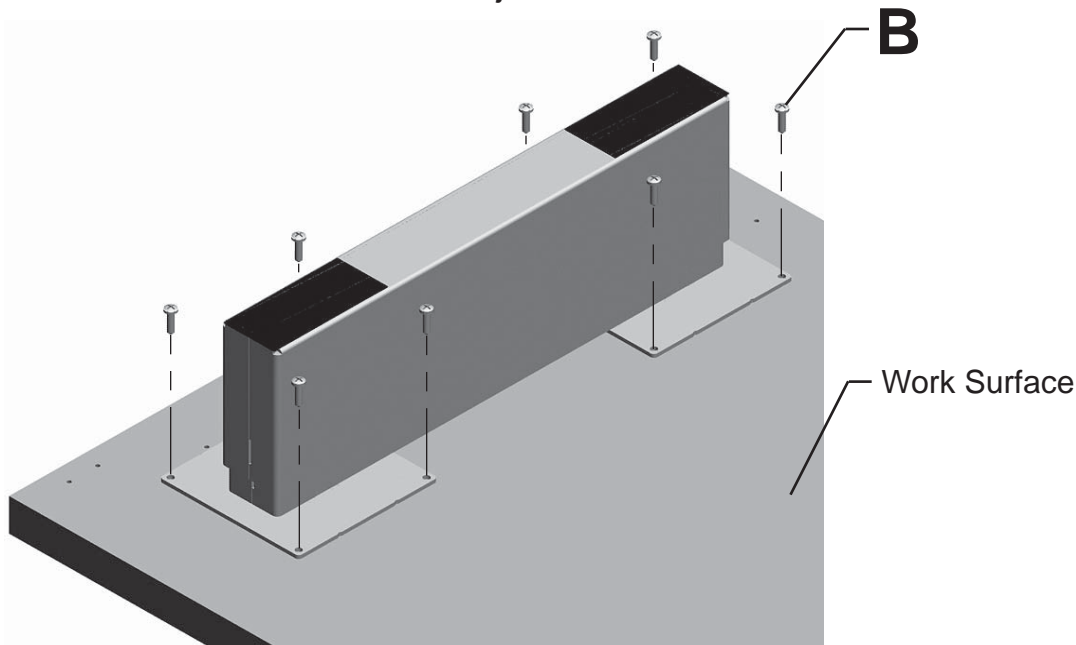
Illustrations and specifications are based on the latest product information available at the time of publication.

The right is reserved to make changes in design and specifications at any time, without notice, and also to discontinue products.

Note: Adjustable Credenza Surface Support Shown below. Use those instructions that apply when installing Fixed Height Surface Support.



2. Determine required height of Support by measuring distance from top of cabinet to underside of work surface.
3. Using 3/16" Hex Driver, adjust Internal Adjustment Screw thru Top Mounting Plates. Adjust two Adjustment Screws equally to avoid binding inner support. The maximum amount of adjustment is 3".



4. Determine position to place support on Work Surface, following previously mentioned guidelines.
5. Mark screw holes onto work surface. Remove Support. Drill pilot holes.
6. Return Support to Work Surface. Install 8 Pan Head Screws(B).

HermanMiller

© 2010 Herman Miller, Inc. Zeeland, Michigan. Printed in the U.S.A.

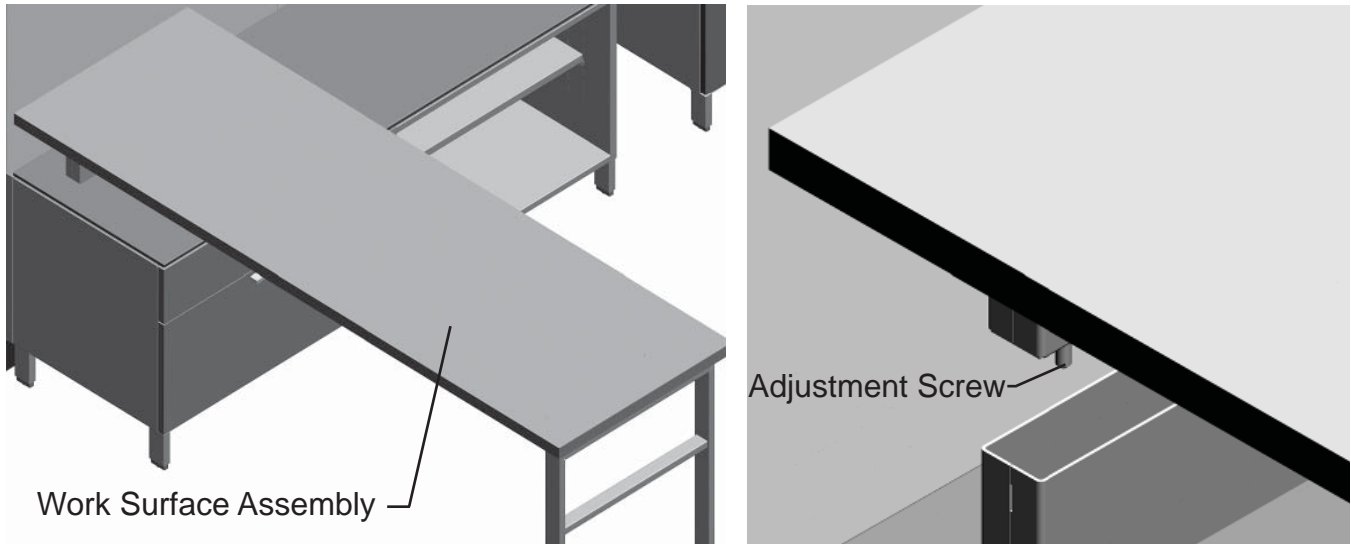
Part no. 1B6CSV rev B.

™  HermanMiller, Canvas Office Landscape are among the trademarks of Herman Miller, Inc.

Illustrations and specifications are based on the latest product information available at the time of publication.

The right is reserved to make changes in design and specifications at any time, without notice, and also to discontinue products.

Caution: When turning work surface over, outer member of assembly can slide off. Hold in place when moving.



10. Place Work Surface Assembly into position.
11. Level Work Surface by adjusting Glides on Work Surface.
12. For additional adjustment, lift Work Surface. Turn Adjustment Screws with fingers as needed.