

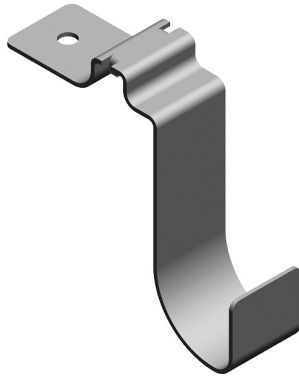


# Canvas Office Landscape® Coat Hook Installation and Disassembly for Recycling Instructions

## Parts Included:



**A** Architectural Coat Hook



Standard Coat Hook

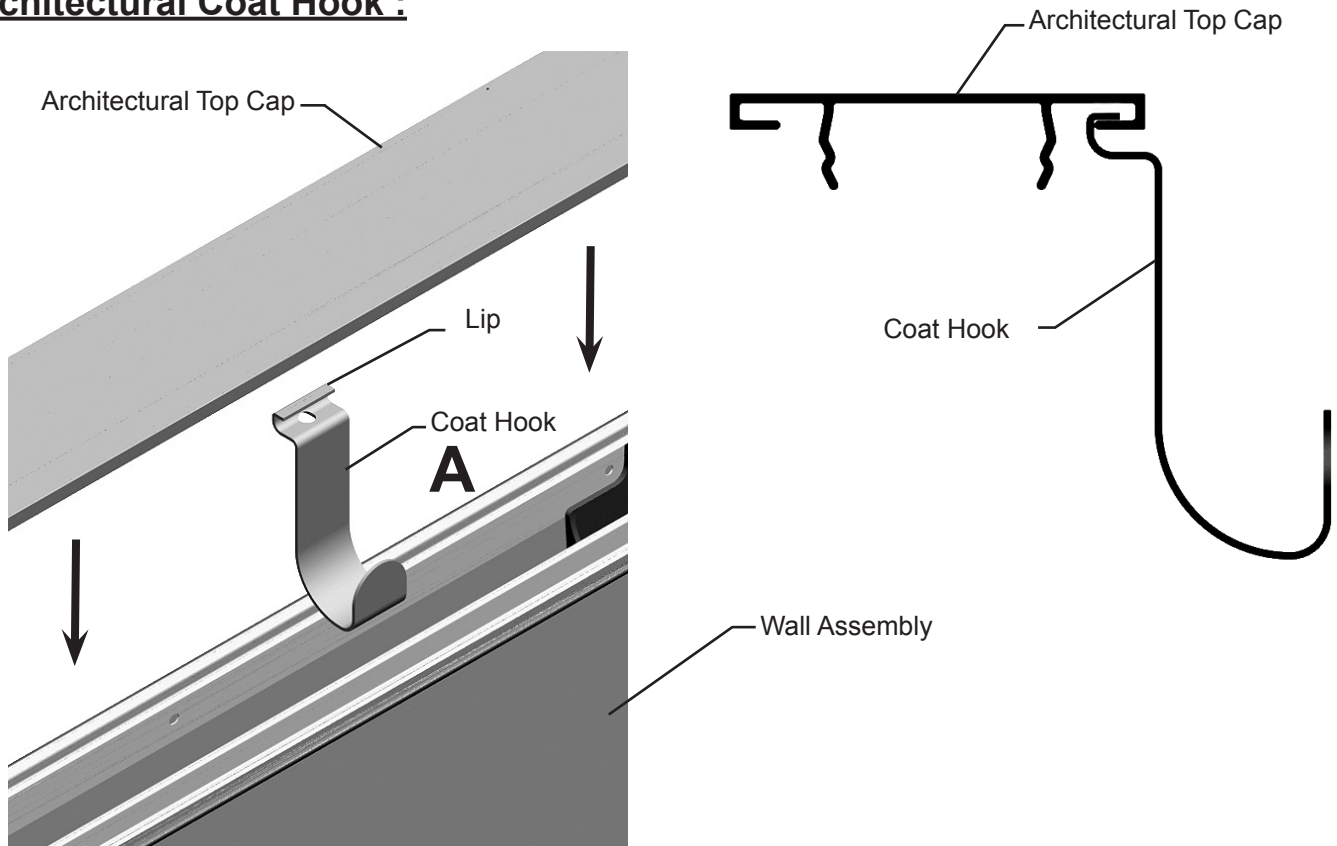
## Tools Required:



Safety Glasses

## Assembly Instructions:

### Architectural Coat Hook :



1. Hook Lip of Coat Hook under edge of Architectural Top Cap.
2. Press Top Cap down onto wall assembly.

**HermanMiller**

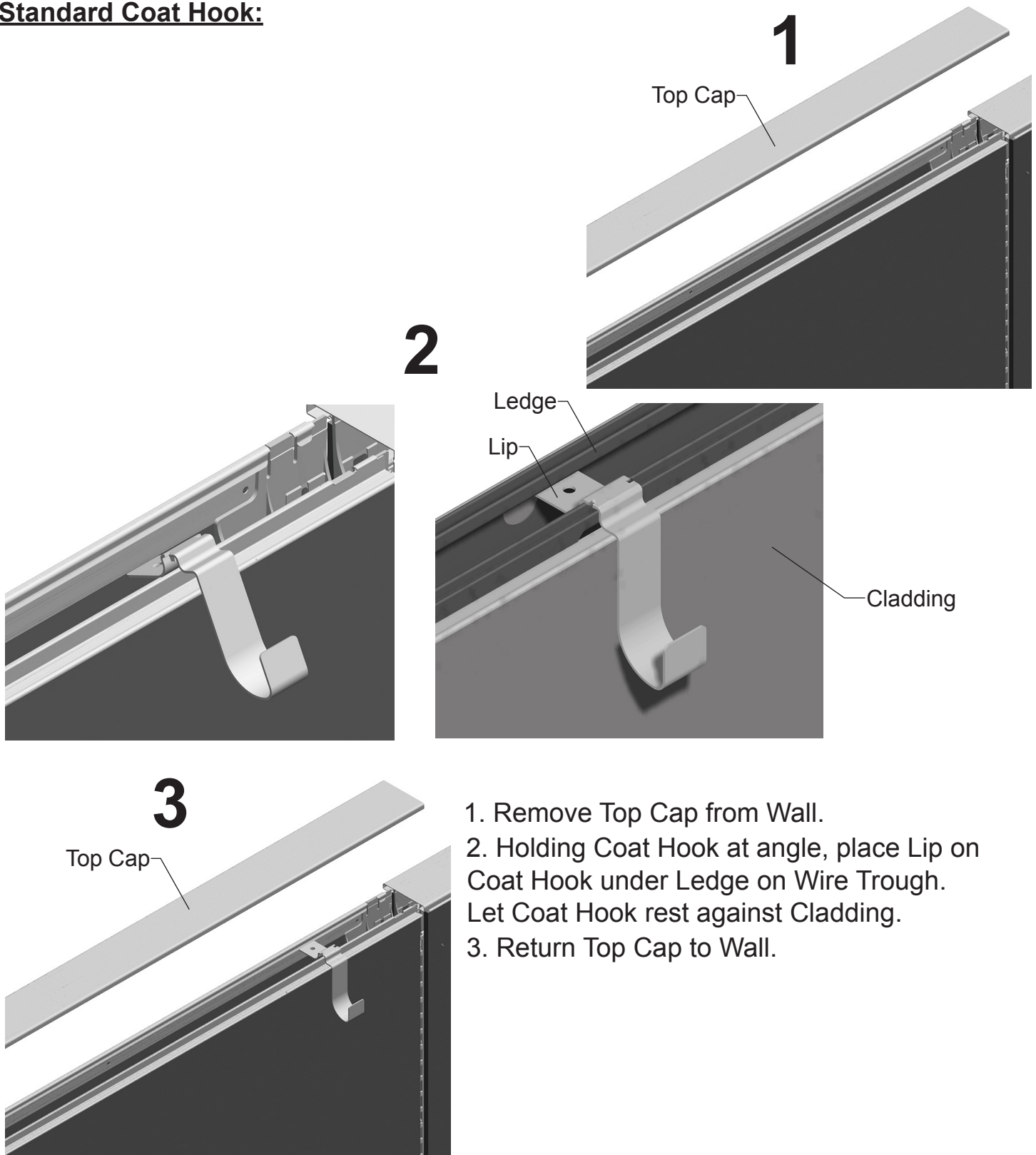
Part no. 1b6x1w rev C.

© 2013 Herman Miller, Inc. Zeeland, Michigan. Printed in the U.S.A.

© Herman Miller and Canvas Office Landscape are among the registered trademarks of Herman Miller, Inc.

Illustrations and specifications are based on the latest product information available at the time of publication. The right is reserved to make changes in design and specifications at any time, without notice, and also to discontinue products.

## Standard Coat Hook:



1. Remove Top Cap from Wall.
2. Holding Coat Hook at angle, place Lip on Coat Hook under Ledge on Wire Trough. Let Coat Hook rest against Cladding.
3. Return Top Cap to Wall.

**HermanMiller**

Part no. 1b6x1w rev C.

© 2013 Herman Miller, Inc. Zeeland, Michigan. Printed in the U.S.A.  
HermanMiller and Canvas Office Landscape are among the registered trademarks of Herman Miller, Inc.  
Illustrations and specifications are based on the latest product information available at the time of publication.  
The right is reserved to make changes in design and specifications at any time, without notice, and also to discontinue products.

---

## **Disassembly for Recycling:**

## **Materials Identification and Segregation:**

Where possible, plastic components are marked with ASTM recycling codes. Use these codes to identify material type for recycling. Non marked components should be treated as mixed plastic. Ferrous metals can be identified using a small magnet for recycling. Non-ferrous metals should be separated and recycled separately.

To disassemble product, reverse the above installation steps.