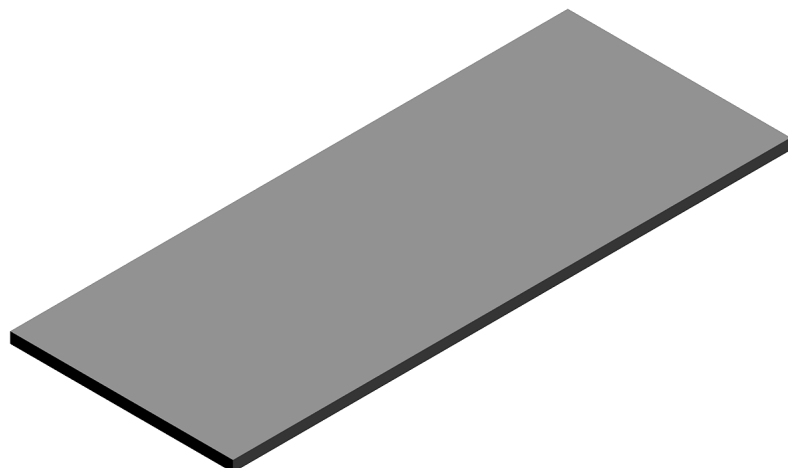


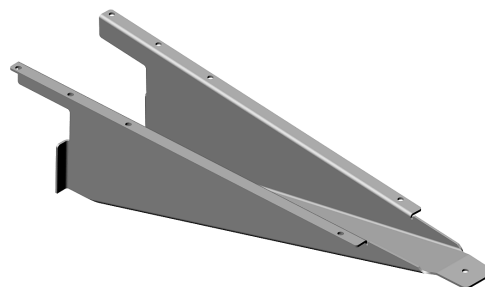


Canvas Office Landscape® Beam Extension Surface Installation and Disassembly for Recycling Instructions

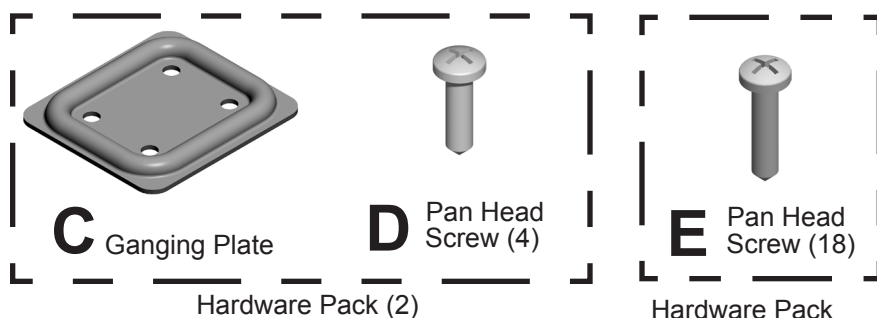
Parts Included:



A Work Surface



B Work Surface Support



C Ganging Plate

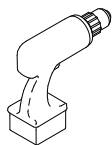
D Pan Head Screw (4)

E Pan Head Screw (18)

Hardware Pack (2)

Hardware Pack

Tools Required:



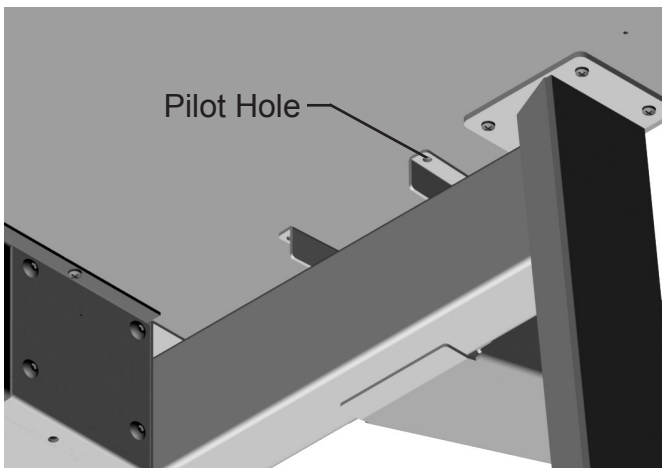
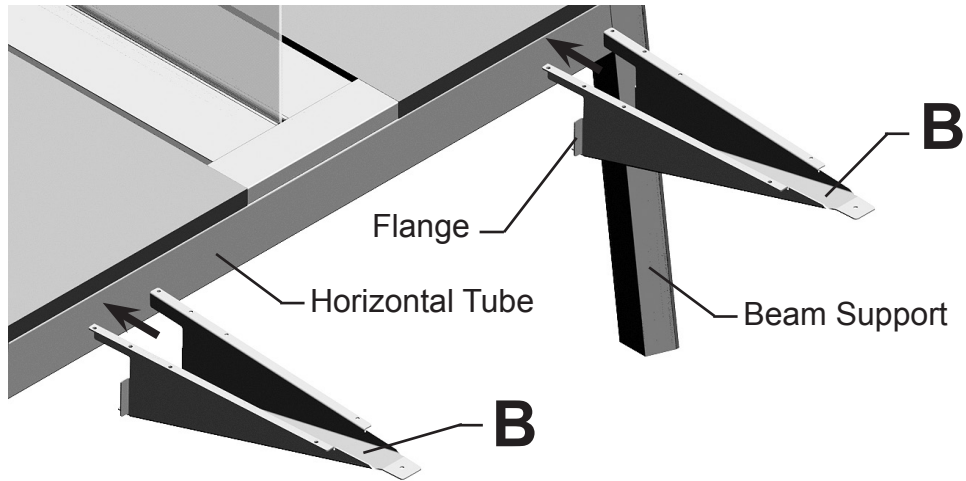
Power Driver



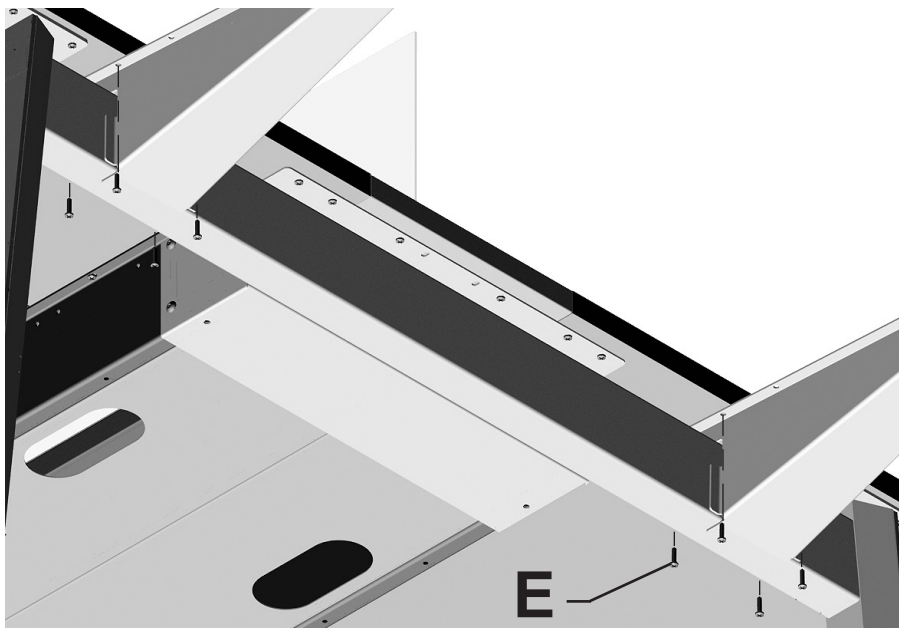
#2 Phillips Bit
(6" Long)

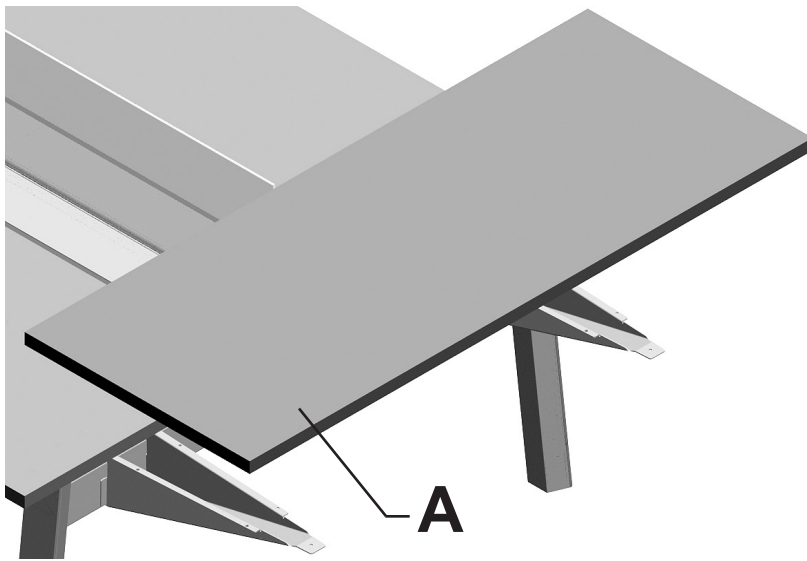


Safety Glass

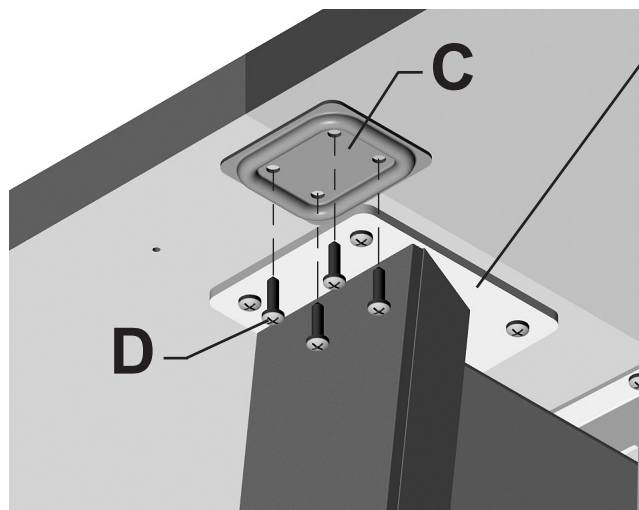
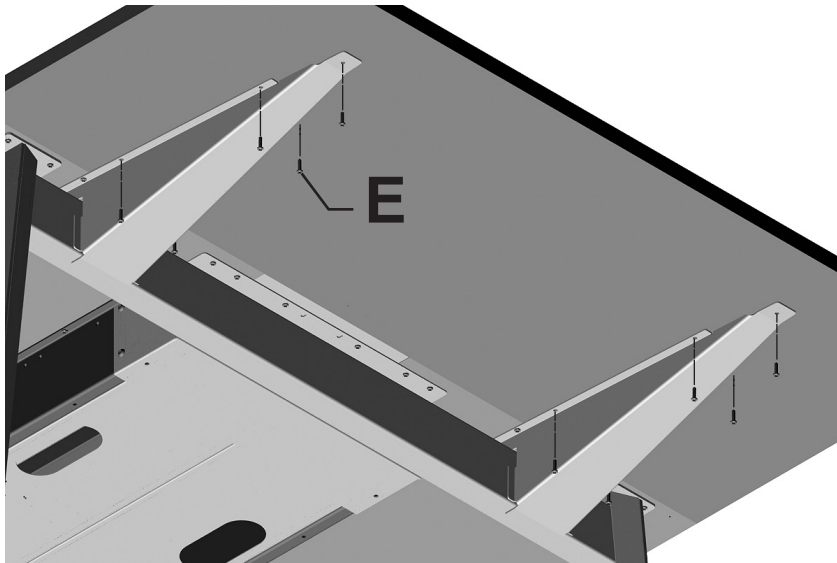


1. Position Work Surface Supports(B) onto Beam Supports. Make sure Flange is tight against Horizontal Tube.
2. Align hole in Work Surface Support with pilot hole in Work Surface. Mark 3 other holes on Work Surface.
3. Remove Supports. Drill Pilot Holes.
4. Return Supports to hole locations.
5. Install 4 Screws(E) for each Support.





6. Place Work Surface(A) onto Supports.
7. Align edges of Work Surface with edges of Beam Work Surfaces. Make sure back edge of Work Surface is tight against ends of Beam Work Surfaces.
8. Mark mounting hole locations onto Work Surface. Remove Work Surface. Drill pilot holes.
9. Return Work Surface to Supports. Install 5 Pan Head Screws(E) for each Support.



Beam Support
Mounting Plate

10. Place Ganging Plates(C) against Beam Support Mounting Plate while straddling 2 work surfaces evenly. Mark holes.
11. Remove Ganging Plates. Drill pilot holes.
12. Return Ganging Plates to Work Surfaces. Install 4 Pan Head Screws(D) for each Plate.

Disassembly and Recycling:

Materials Identification and Segregation:

Where possible, plastic components are marked with ASTM recycling codes. Use these codes to identify material type for recycling. Non marked components should be treated as mixed plastic. Ferrous metals can be identified using a small magnet for recycling. Non-ferrous metals should be separated and recycled separately.

To disassemble product, reverse steps 12 through 1 and also do the following: