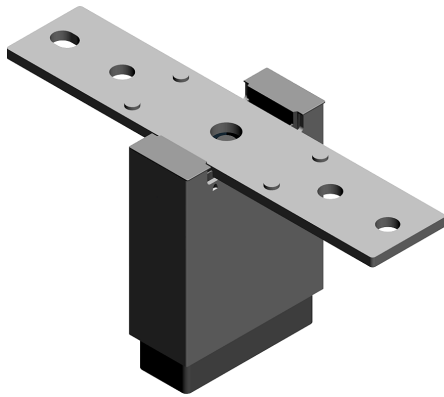


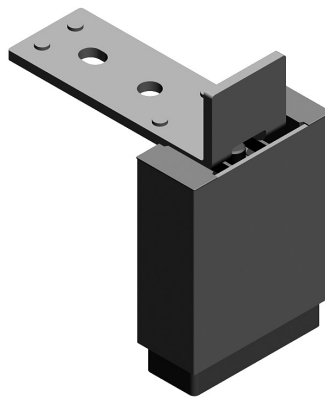


# Canvas Office Landscape™ Architectural Foot Installation and Disassembly for Recycling Instructions

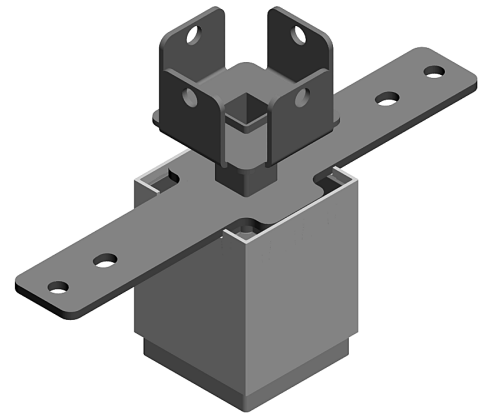
## Parts Included:



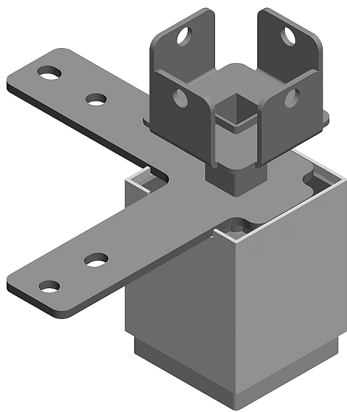
Shared, Frame-To-Frame Connection



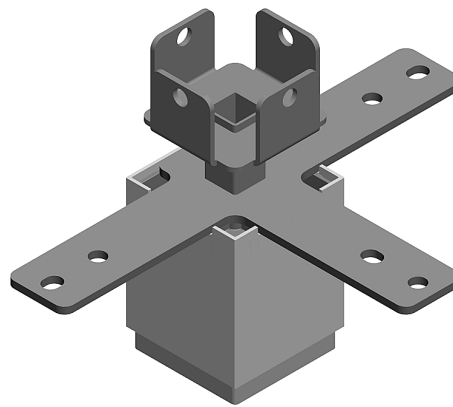
End-Of-Frame



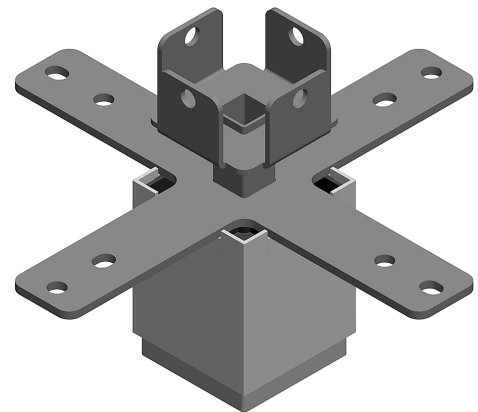
2-Way 180 Degree Connection



2-Way 90 Degree Connection



3-Way 90 Degree Connection



4-Way 90 Degree Connection

**A**



**B** Angle Bracket



**C** Hex Head Machine Screw  
(Black - 2 1/4" Long)



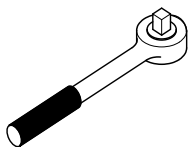
**D** Hex Head Cap Screw  
(Silver - 2 1/2" Long)



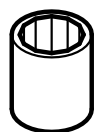
**E** Hex Nut

Hardware Pack

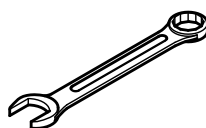
## Tools Required:



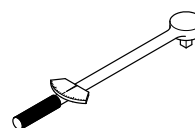
Ratchet Wrench



9/16 Socket



9/16 Wrench



Torque Wrench



Safety Glasses

**HermanMiller**

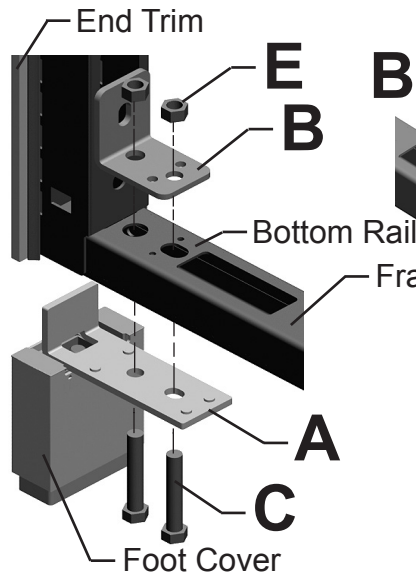
Part no. 1b6z0s rev C.

© 2013 Herman Miller, Inc. Zeeland, Michigan. Printed in the U.S.A.  
 ® **HermanMiller**, Action Office and Vivo are among the registered trademarks of Herman Miller, Inc.  
 ™ Sense, Setu, Tu, Traverse and Sayl are among the trademarks of Herman Miller, Inc.

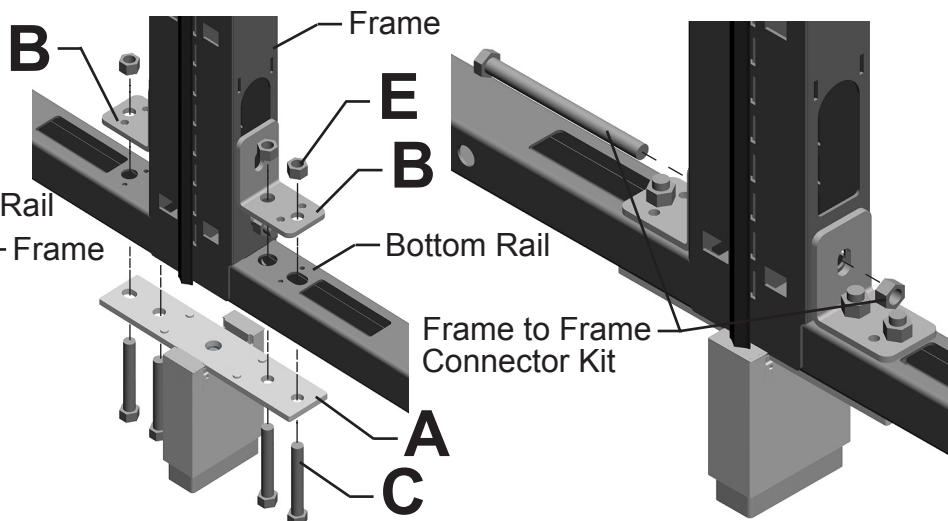
Illustrations and specifications are based on the latest product information available at the time of publication.  
 The right is reserved to make changes in design and specifications at any time, without notice, and also to discontinue products.

## Assembly Instructions:

### End-Of-Frame Foot



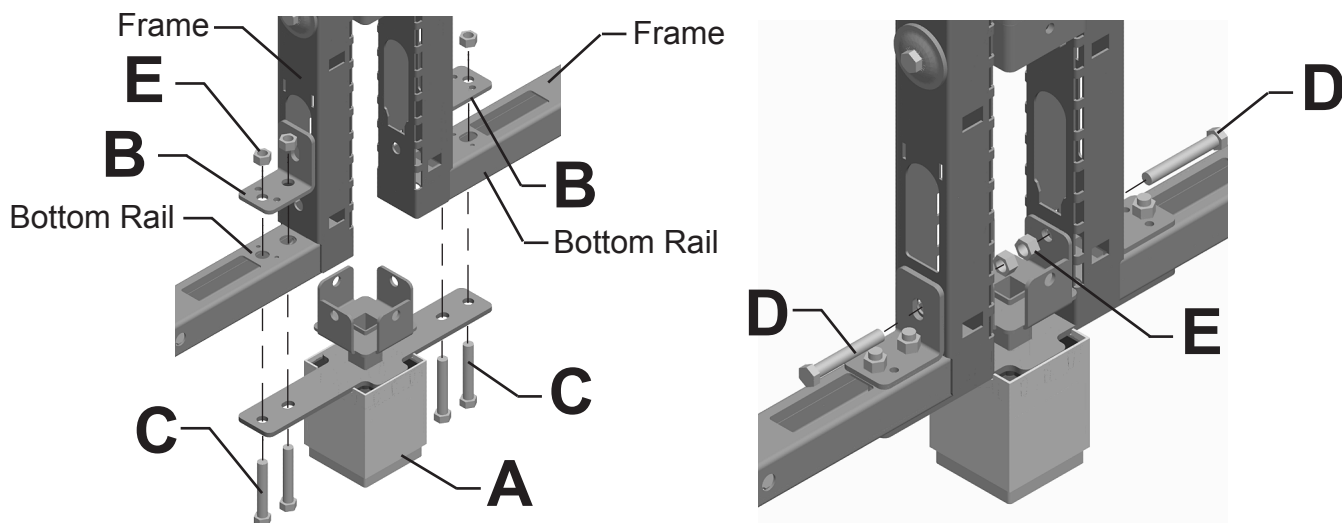
### Shared, Frame to Frame Foot:



**End-Of Frame:** Place Foot(A) under frame. Place Angle Bracket(B) on top of bottom rail of frame. Insert Hex Head Machine Screws(C) from bottom up thru frame. Install Hex Nuts(E) onto Screws. Align Foot Cover with End Trim before Tightening. Torque screws to 200 in-lbs.

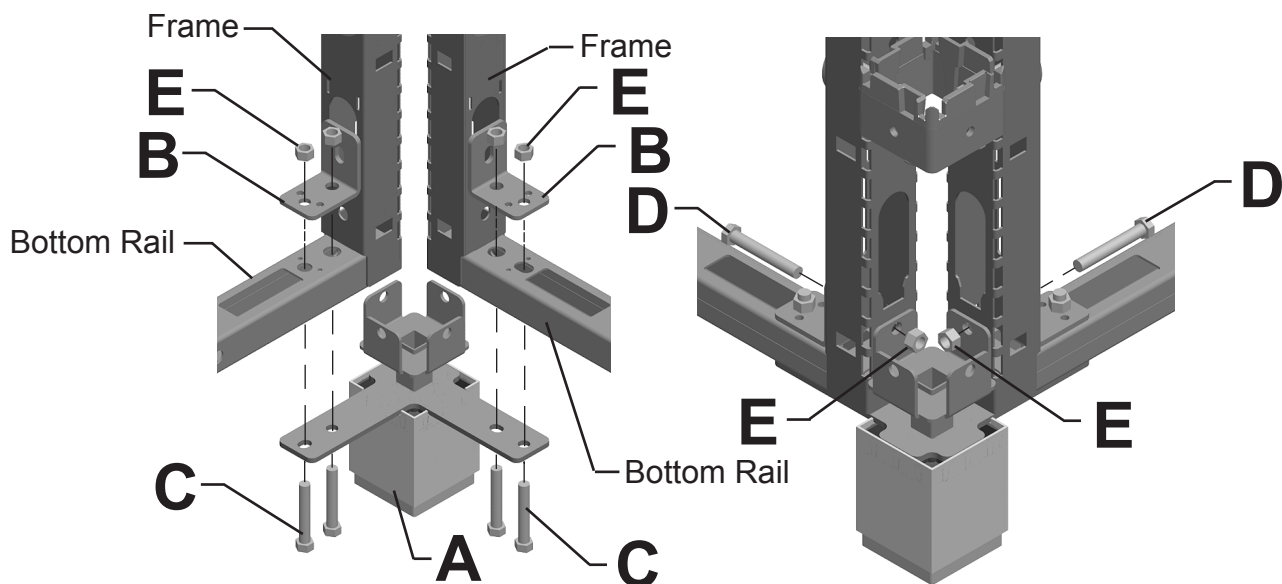
**Frame to Frame:** Place Foot(A) under frames. Place Angle Brackets(B) on top of bottom rail of frames. Insert Hex Head Machine Screws(C) from bottom up thru frames. Install Hex Nuts(E) onto Screws. Install Frame to Frame Connector Kit FT128. See instruction sheet 1B2GLX for details.

### 2-Way 180 Degree Foot



**2-Way 180 Degree:** Place Foot(A) under frames. Place Angle Brackets(B) on top of bottom rail of frames. Insert Hex Head Machine Screws(C) from bottom up thru frames. Install Hex Nuts(E) onto Screws. Insert Hex Head Cap Screws(D) thru frames. Install Hex Nuts(E) onto Screws. Torque screws to 200 in-lbs.

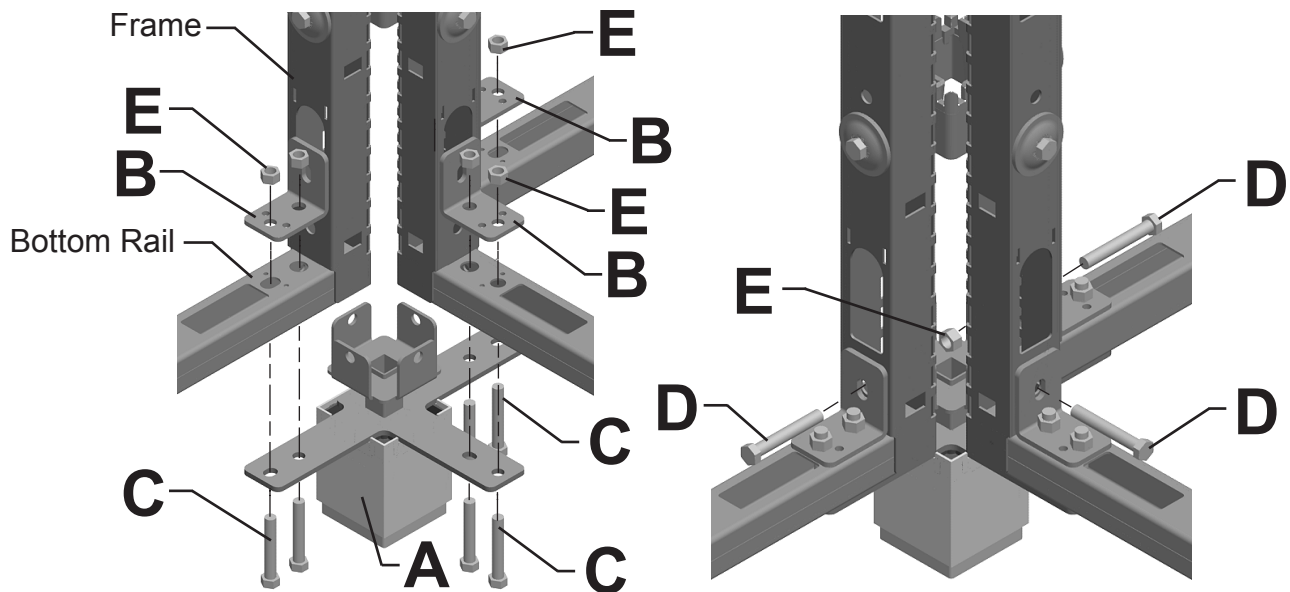
### 2-Way, 90 Degree Foot:



**2-Way 90 Degree:** Place Foot(A) under frames. Place Angle Brackets(B) on top of bottom rail of frames. Insert Hex Head Machine Screws(C) from bottom up thru frames. Install Hex Nuts(E) onto Screws. Insert Hex Head Cap Screws(D) thru frames. Install Hex Nuts(E) onto Screws. Torque screws to 200 in-lbs.

---

### 3-Way, 4-Way 90 Degree Foot:



**3-Way (shown), 4-Way 90 Degree:** Place Foot(A) under frames. Place Angle Brackets(B) on top of bottom rail of frames. Insert Hex Head Machine Screws(C) from bottom up thru frames. Install Hex Nuts(E) onto Screws. Insert Hex Head Cap Screws(D) thru frames. Install Hex Nuts(E) onto Screws. Torque screws to 200 in-lbs.

## Disassembly for Recycling:

## Materials Identification and Segregation:

Where possible, plastic components are marked with ASTM recycling codes. Use these codes to identify material type for recycling. Non marked components should be treated as mixed plastic. Ferrous metals can be identified using a small magnet for recycling. Non-ferrous metals should be separated and recycled separately.

To disassemble product, reverse steps according to foot and frame.