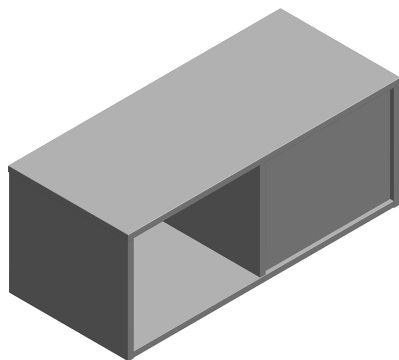




# Canvas Office Landscape® Storage Cabinet, Frame Top Mounted, Open and Disassembly for Recycling Instructions

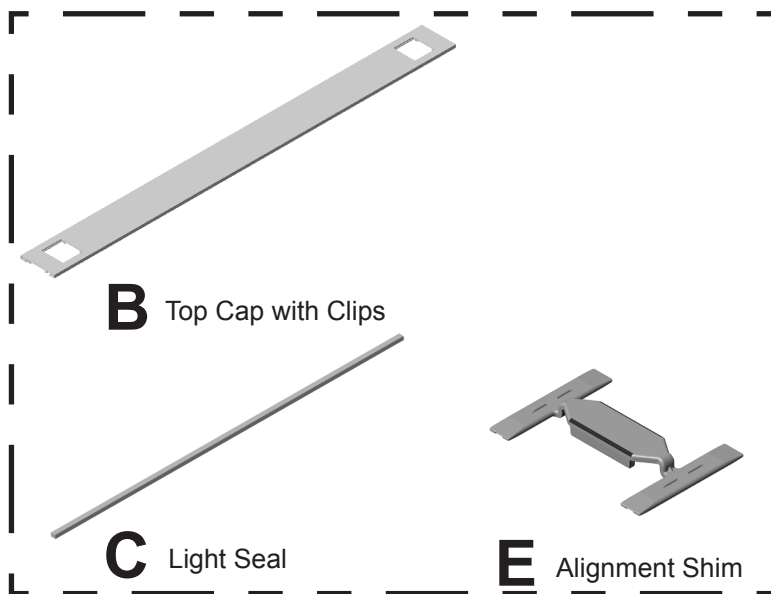
## Parts Included:



**A** Storage Unit



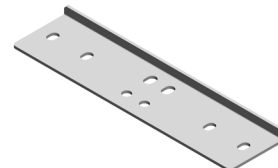
**F** Adaptor Plate (2)  
(42" High Frame only)



Top Cap Kit (Architectural)



**H** Bayonet Weldment (2)



**J** Mounting Flange (2)



**K** Hex Head Bolt (6)



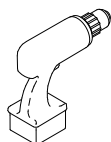
**L** Flat Washer (6)



**M** Truss Head Screw (8)

Hardware Pack

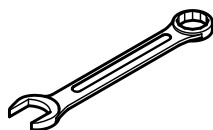
## Tools Required:



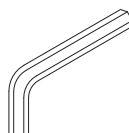
Power Driver



#2 Phillips Bit



7/16 Wrench



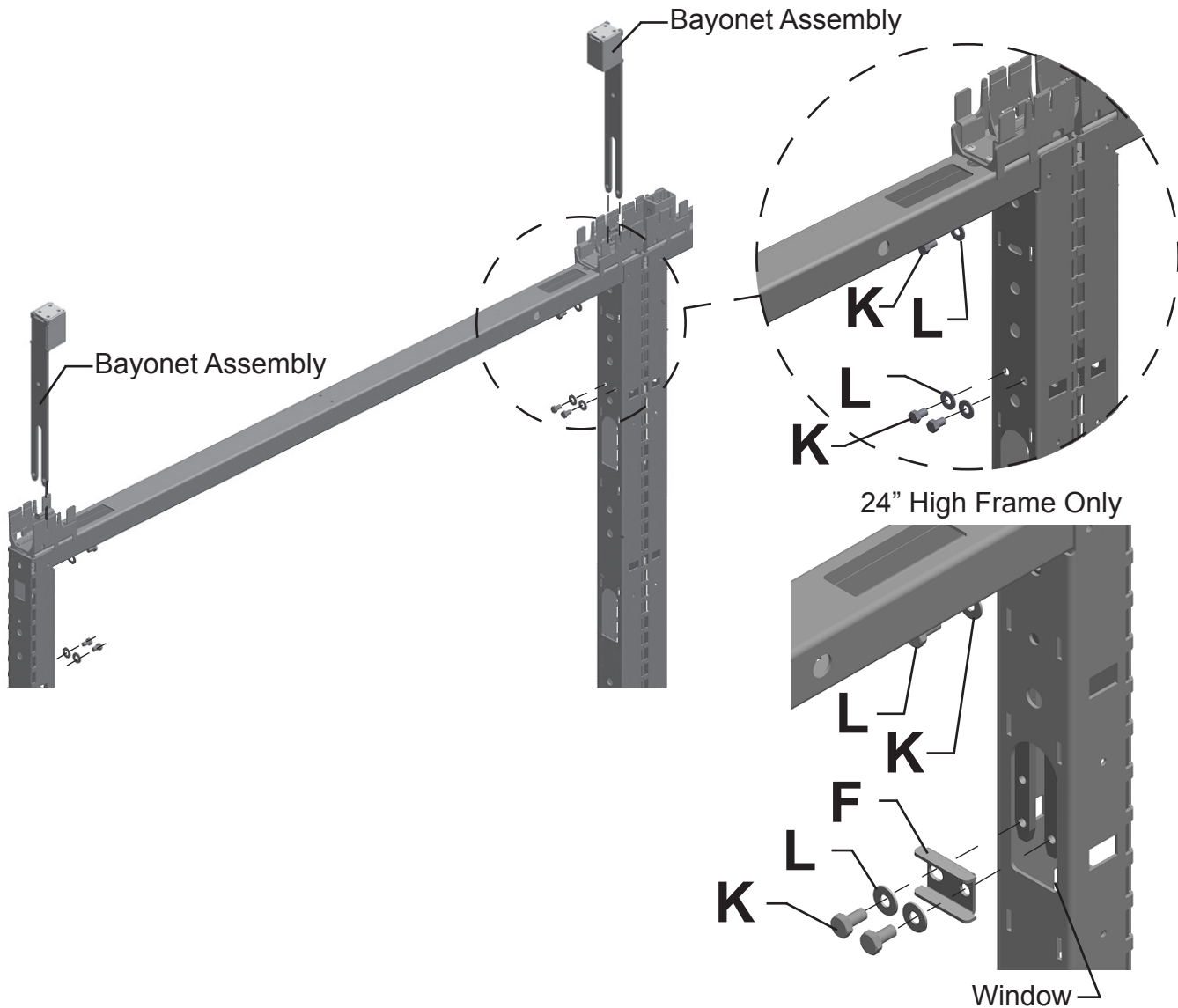
1/8 Allen Wrench

HermanMiller

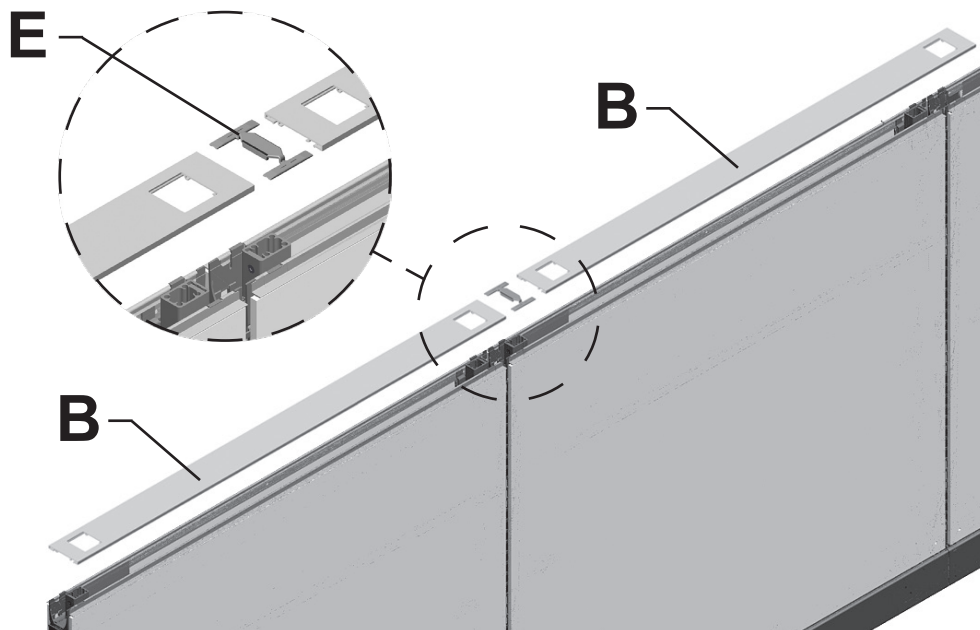
Part no. 1b80sr rev E.

© 2019 Herman Miller, Inc. Zeeland, Michigan. Printed in the U.S.A.  
© Herman Miller and Canvas Office Landscape are among the registered trademarks of Herman Miller, Inc.

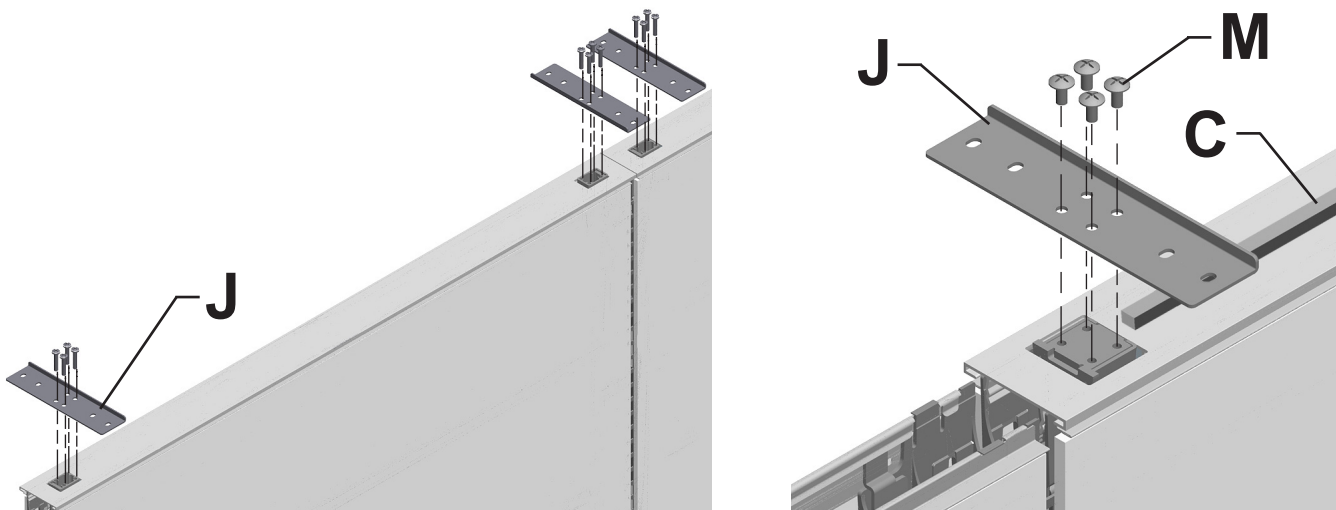
Illustrations and specifications are based on the latest product information available at the time of publication.  
The right is reserved to make changes in design and specifications at any time, without notice, and also to discontinue products.



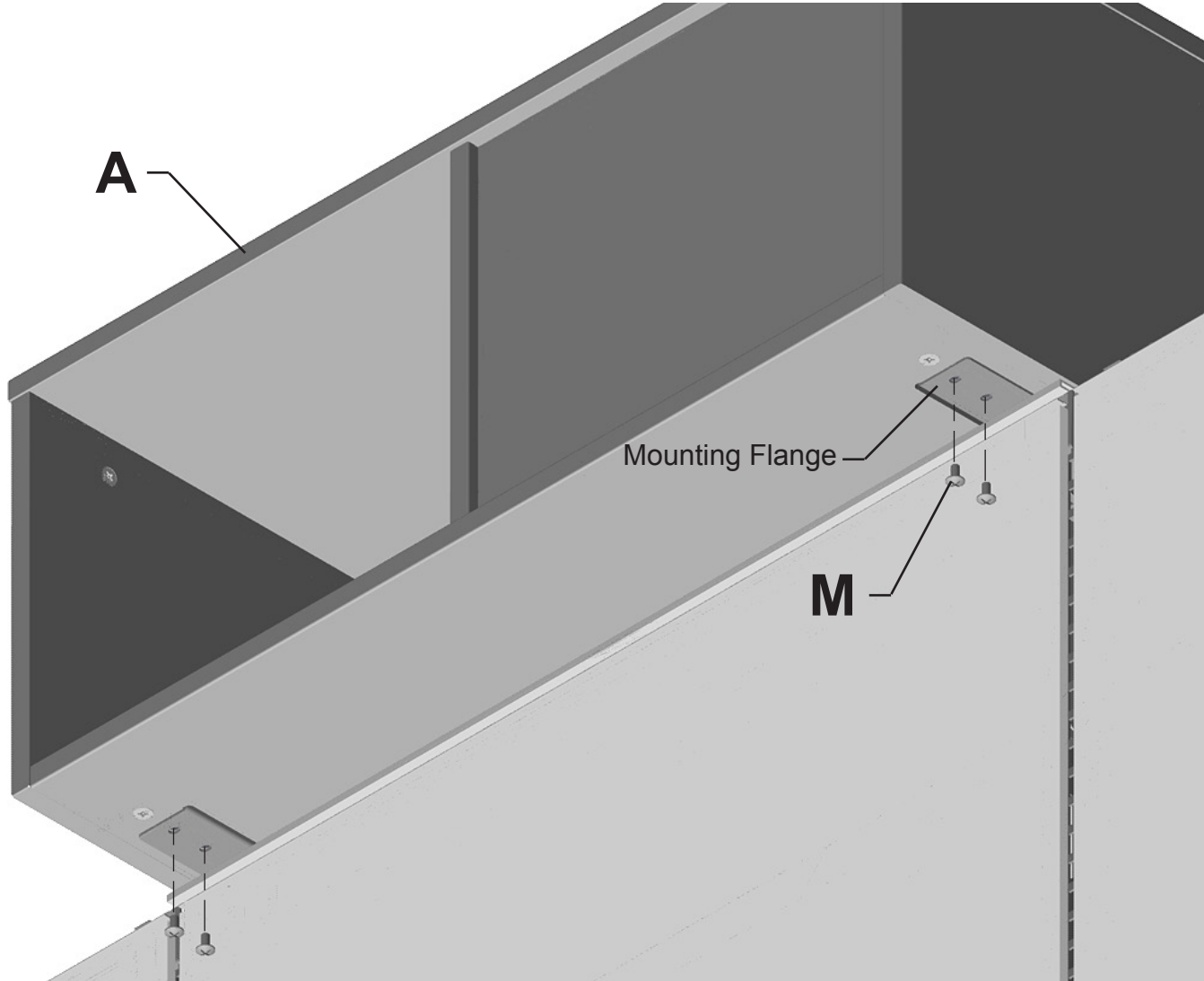
1. Insert Bayonet Assemblies into Frame. Secure to frame with 3 Hex Head Screws(K) and 3 Flat Washers(L) per assembly. For 42" high Frame; position Adaptor Plate(F) into window of frame before installing Screws and Washers.



2. Install Cladding onto Frame(s).
3. Place Top Cap(B) over Bayonets.
4. For architectural top caps only, join Top Caps by inserting Alignment Shims(E) half way into one Top Cap. Slide other Top Cap onto other half of Alignment Shim.
5. Align Cutouts in Top Caps with Bayonet Assemblies. Press down on Top Caps over Wire Channels until Top Caps snaps into place.



6. Position Mounting Flanges(J) onto Bayonet Assemblies.
7. Secure Mounting Flanges to Bayonet Assemblies with 4 Truss Head screws(M).
8. Remove backer from light seal. Place light seal (C) on top cap.



9. Position Storage Unit(A) onto Mounting Flanges.
10. Secure Storage Unit to Mounting Flanges with 4 Truss Head Screws(M) per Mounting Flange.

---

## **Disassembly and Recycling:**

### **Materials Identification and Segregation:**

Where possible, plastic components are marked with ASTM recycling codes. Use these codes to identify material type for recycling. Non marked components should be treated as mixed plastic. Ferrous metals can be identified using a small magnet for recycling. Non-ferrous metals should be separated and recycled separately.

To disassemble product, reverse steps 10 through 1 and also do the following: