

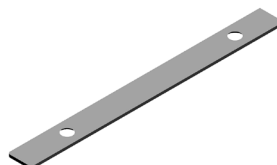


# Canvas Office Landscape™ Organizer Bracket Installation and Disassembly for Recycling Instructions

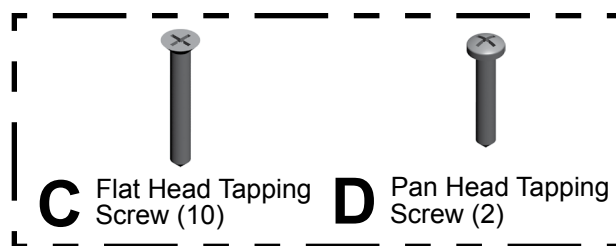
## Parts Included:



**A** Back Bracket



**B** End Bracket (2)



**C** Flat Head Tapping  
Screw (10)

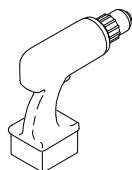
**D** Pan Head Tapping  
Screw (2)

Hardware Pack

## Tools Required:



Putty Knife



Power Driver



#2 Phillips Bit



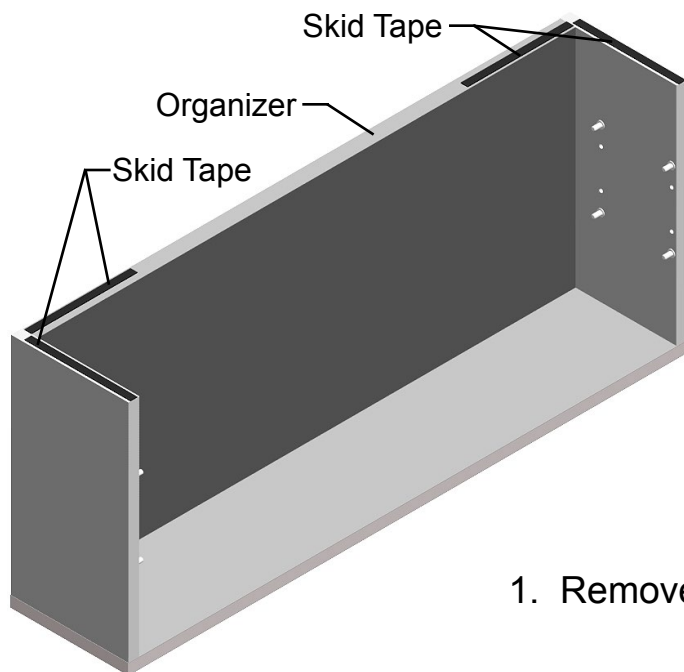
1/8" Drill Bit



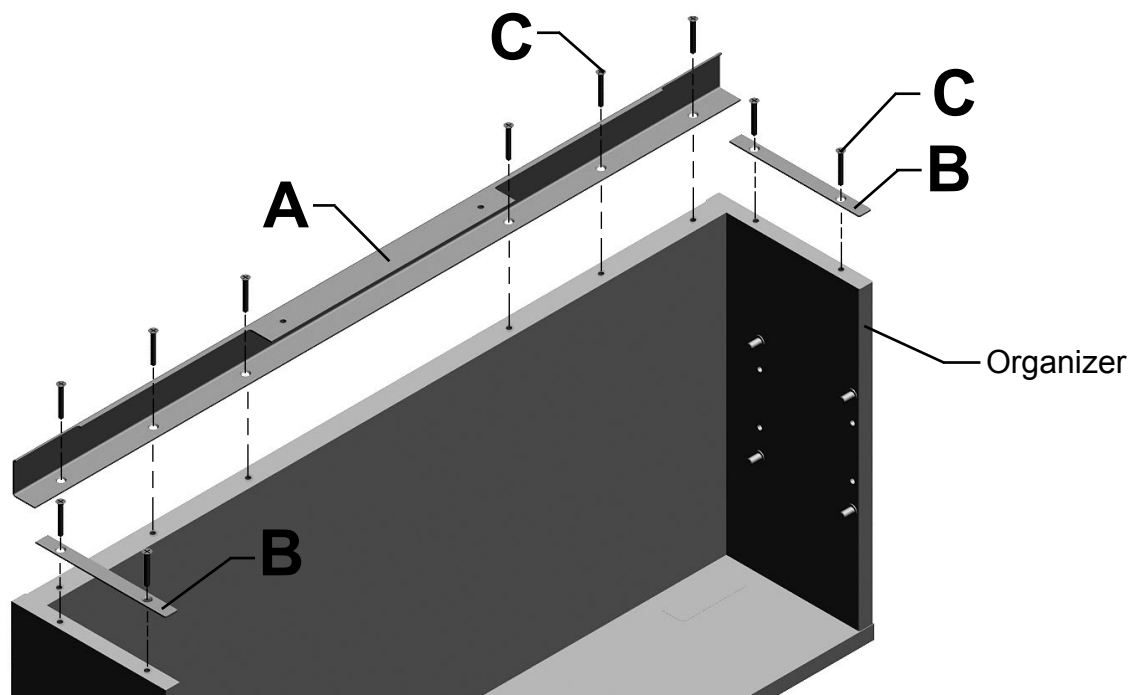
Safety Glasses

---

## **Assembly Instructions:**



1. Remove Skid Tape from bottom of Organizer.




2. Remove shelves from Organizer if not already removed.
3. Place Back Bracket(A) and End Brackets(B) onto bottom of Organizer.
4. Secure Brackets to Organizer with Flat Head Tapping Screws(C).

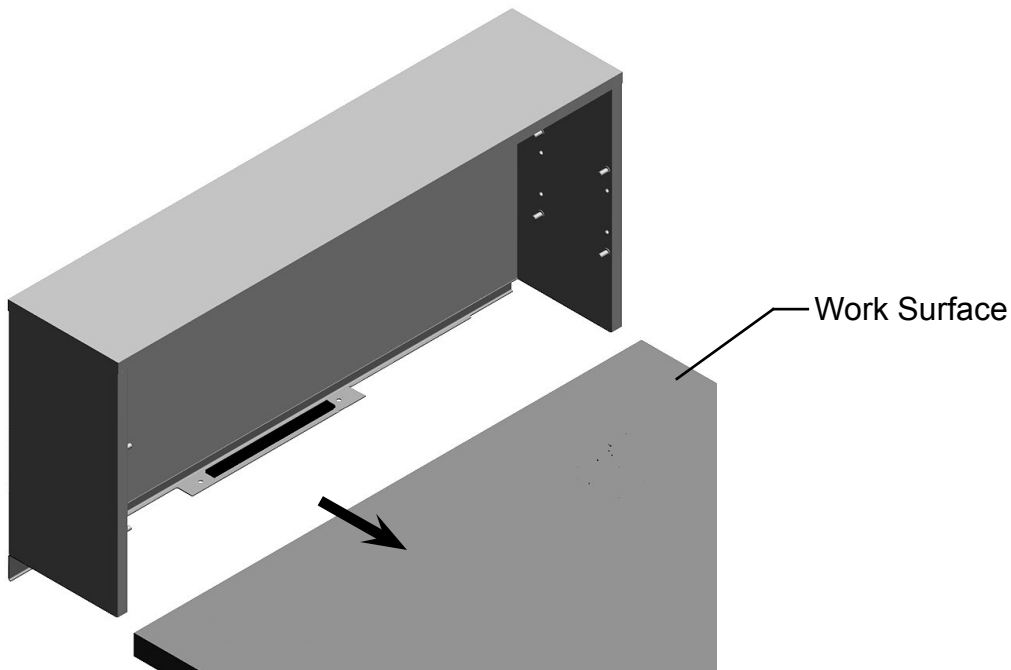
---

**HermanMiller**

Part no. 1b8jdb rev C.

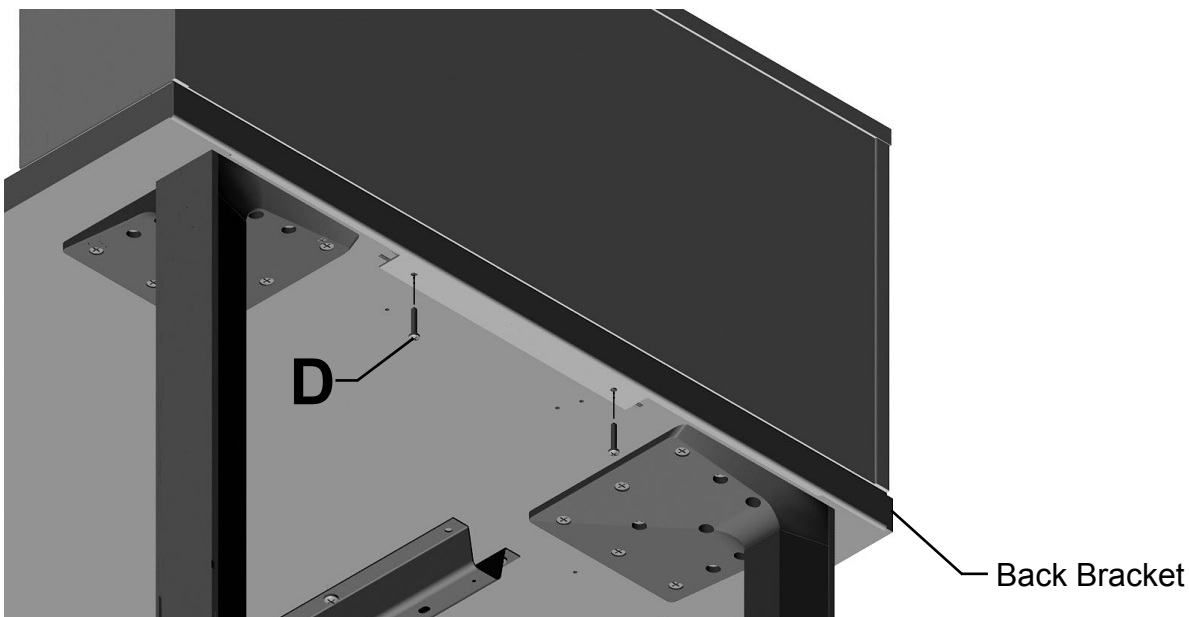
© 2014 Herman Miller, Inc. Zeeland, Michigan. Printed in the U.S.A.  
™  HermanMiller, Canvas Office Landscape are among the trademarks of Herman Miller, Inc.

Illustrations and specifications are based on the latest product information available at the time of publication.  
The right is reserved to make changes in design and specifications at any time, without notice, and also to discontinue products.

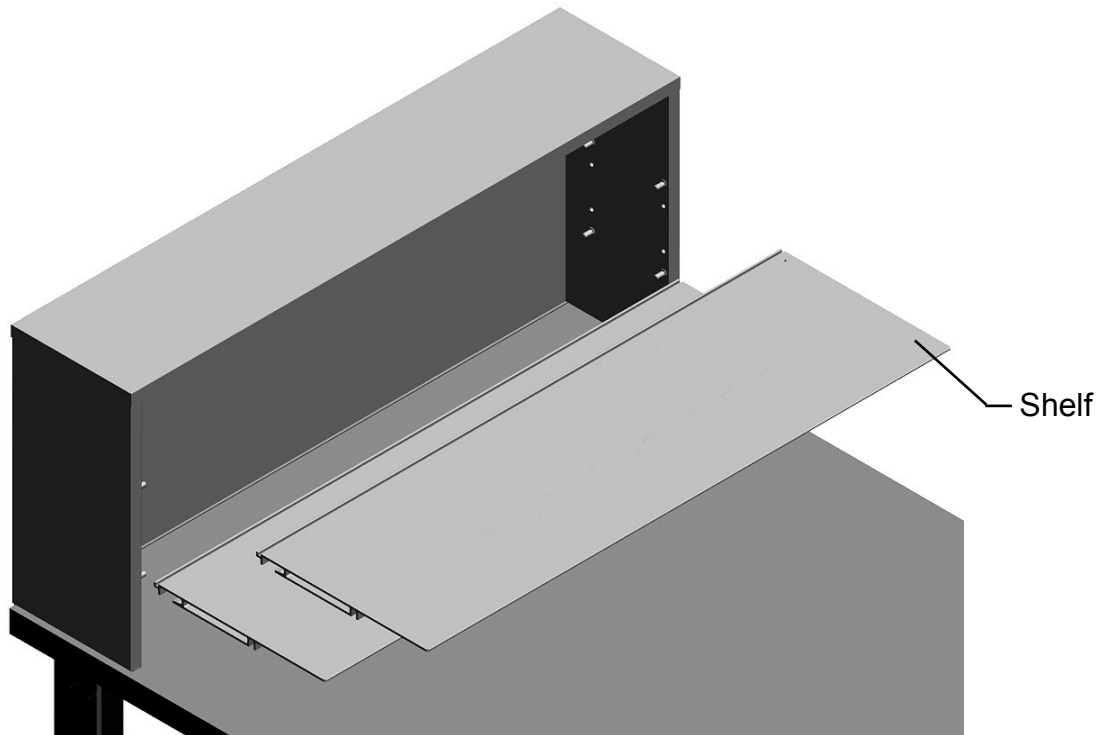


5. Position Organizer onto Work Surface.

Note: If difficulty positioning organizer onto work surface because of tight fit, remove tape from inside of channel.



6. Make sure Back Bracket is tight against edge of Work Surface.
7. Drill pilot holes into work surface making sure not to drill through work surface.
8. Secure Organizer to work surface with 2 Pan Head Tapping Screws(D).



9. Install Shelves into Organizer.

## **Disassembly for Recycling:**

### **Materials Identification and Segregation:**

Where possible, plastic components are marked with ASTM recycling codes. Use these codes to identify material type for recycling. Non marked components should be treated as mixed plastic. Ferrous metals can be identified using a small magnet for recycling. Non-ferrous metals should be separated and recycled separately.

To disassemble product, reverse steps 9 through 2.