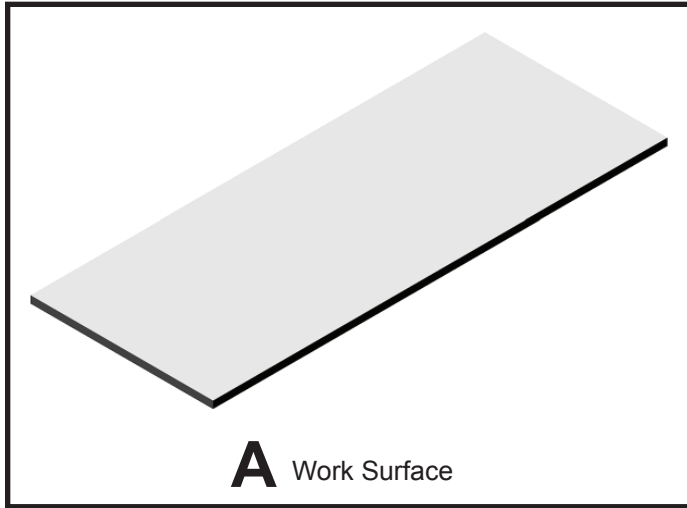




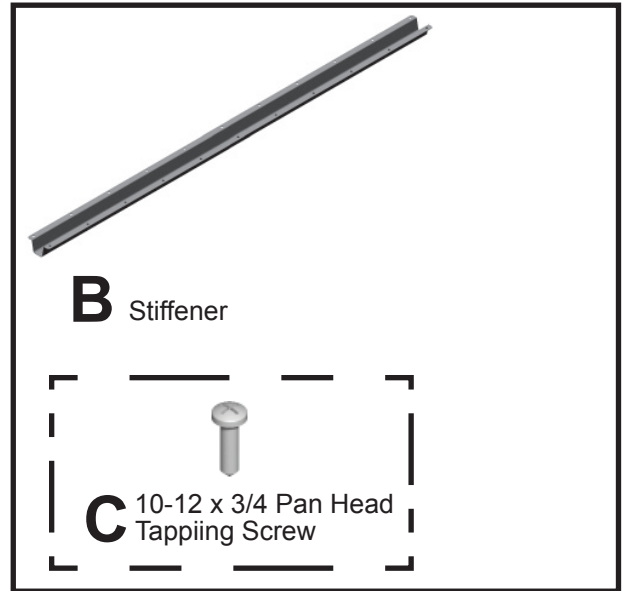
Canvas Office Landscape® Dock-Based Surface and Peninsula Installation and Disassembly for Recycling Instructions

Parts Included For Surface:



A Work Surface

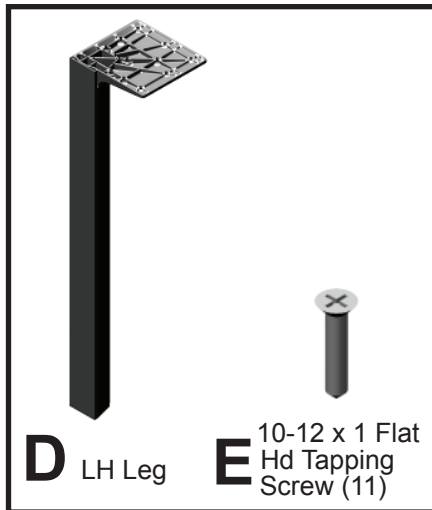
(Work Surface)



B Stiffener

C 10-12 x 3/4 Pan Head
Tapping Screw

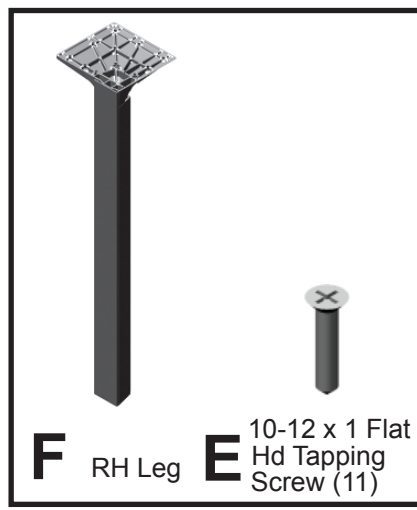
(Stiffener)



D LH Leg

E 10-12 x 1 Flat
Hd Tapping
Screw (11)

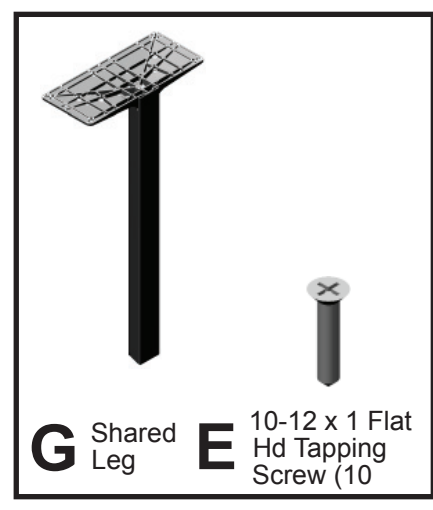
(FT2B2.FL)



F RH Leg

E 10-12 x 1 Flat
Hd Tapping
Screw (11)

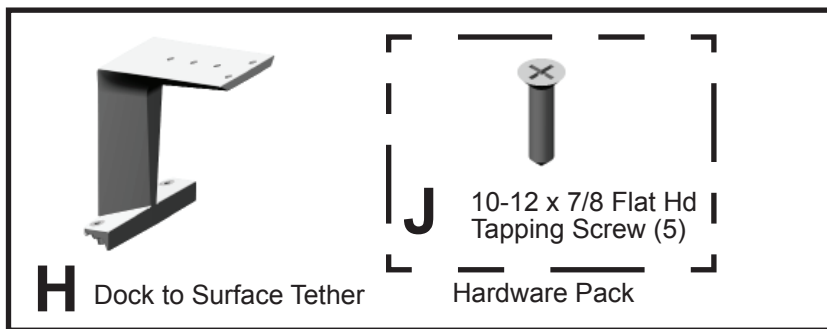
(FT2B2.FR)



G Shared
Leg

E 10-12 x 1 Flat
Hd Tapping
Screw (10)

(FD2B2.FS)



H Dock to Surface Tether

J 10-12 x 7/8 Flat Hd
Tapping Screw (5)

Hardware Pack

(FD290)

HermanMiller

© 2015 Herman Miller, Inc. Zeeland, Michigan. Printed in the U.S.A.

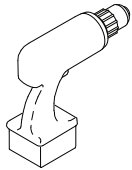
Part no. 1BDWNJ rev B.

™, ®, Herman Miller, Canvas Office Landscape are among the trademarks of Herman Miller, Inc.

Illustrations and specifications are based on the latest product information available at the time of publication.

The right is reserved to make changes in design and specifications at any time, without notice, and also to discontinue products.

Tools Required:



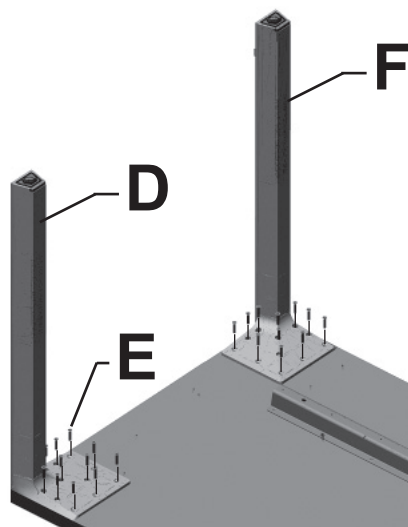
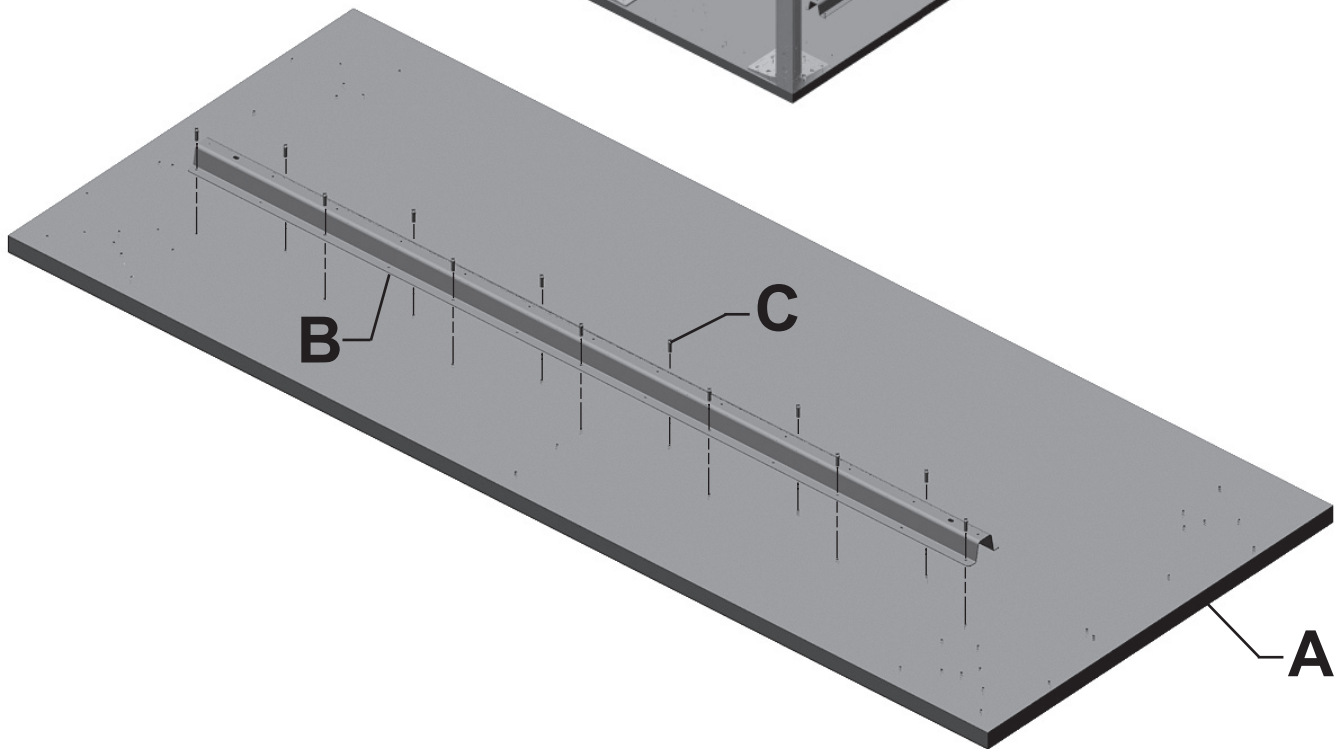
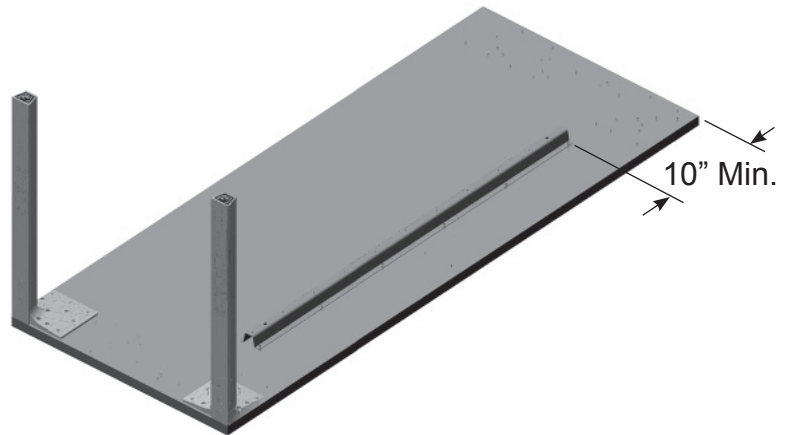
Power Driver



#2 Phillips Bit



1/8" Drill Bit



1. Place perpendicular mounted work surface (A) face down on clean padded surface.
2. Assemble Stiffener (B) to work surface with pan head tapping screws (C). Install Stiffener recommended in planning guide so that it is minimum of 10" between end of Stiffener and edge of surface that will attach to dock to allow for under surface power module.
3. Attach LH Leg (D) and RH Leg (F) to work surface with flat head tapping screws (E).

HermanMiller

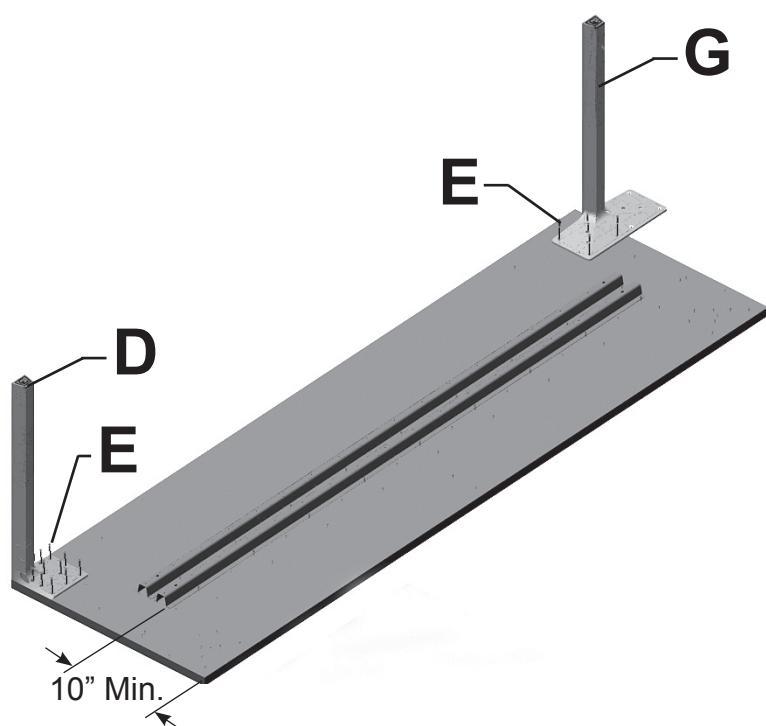
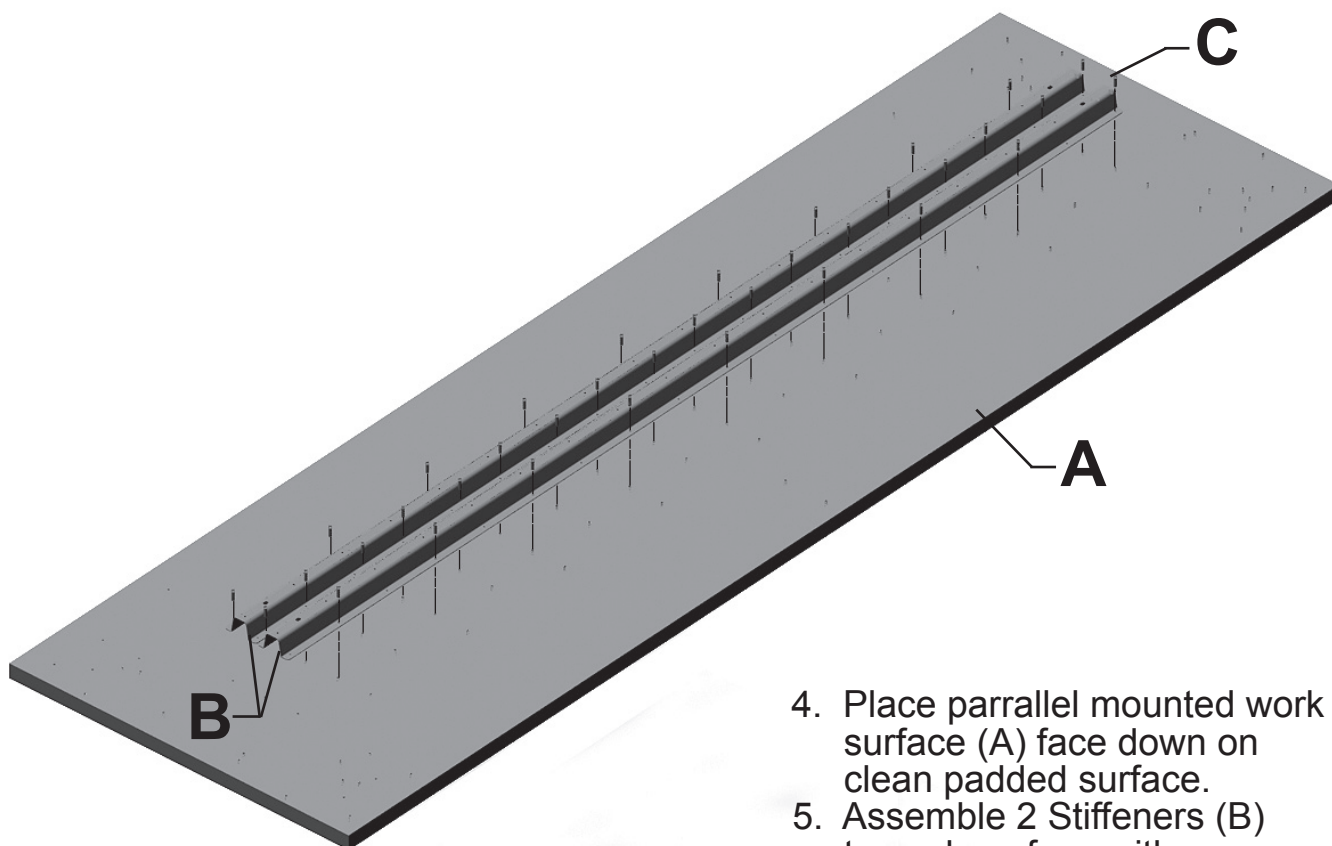
© 2015 Herman Miller, Inc. Zeeland, Michigan. Printed in the U.S.A.

Part no. 1BDWNJ rev B.

™, ®, Herman Miller, Canvas Office Landscape are among the trademarks of Herman Miller, Inc.

Illustrations and specifications are based on the latest product information available at the time of publication.

The right is reserved to make changes in design and specifications at any time, without notice, and also to discontinue products.



4. Place parallel mounted work surface (A) face down on clean padded surface.
5. Assemble 2 Stiffeners (B) to work surface with pan head tapping screws (C). Use front most sets of pre-drilled holes. There must be a minimum of 10" of space between back edge of surface and edge of Stiffener to allow for under surface power module. This may require new pilot holes in some surfaces.
6. Attach LH Leg (D) and/or RH Leg (F) to work surface with flat head tapping screws (E). Use Shared Leg (G) when ganging work surfaces end to end.

Note: There will be a 1/8" gap between surfaces if predrilled holes in surface are used to locate Shared Leg.

HermanMiller

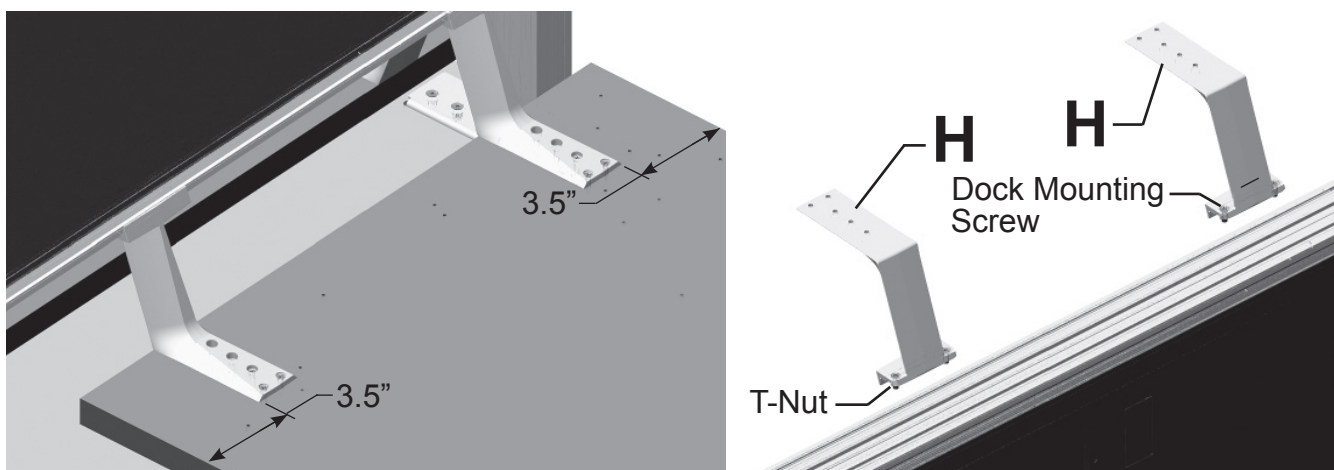
© 2015 Herman Miller, Inc. Zeeland, Michigan. Printed in the U.S.A.

Part no. 1BDWNJ rev B.

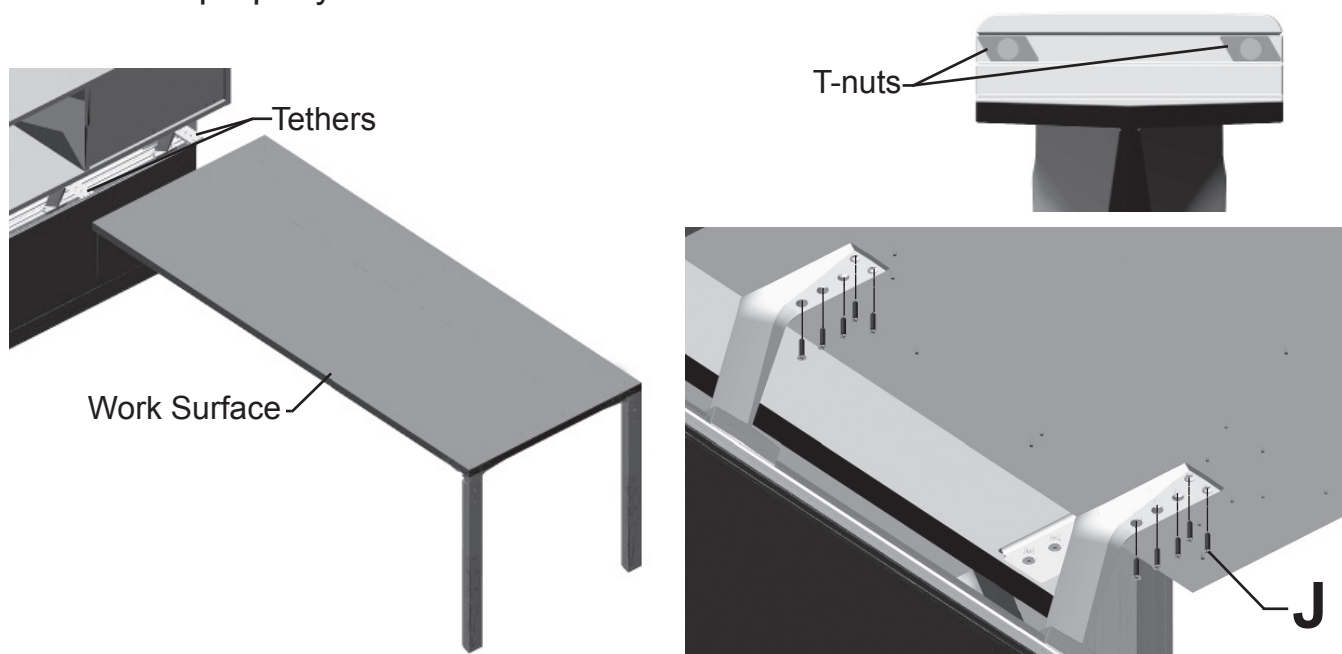
™  Herman Miller, Canvas Office Landscape are among the trademarks of Herman Miller, Inc.

Illustrations and specifications are based on the latest product information available at the time of publication.

The right is reserved to make changes in design and specifications at any time, without notice, and also to discontinue products.



7. Determine where work surface is to be installed. Dock to Surface Tethers are to be mounted 3 1/2" in from edge of work surface.
8. Back out dock mounting screws in Dock to Surface Tethers (H) until T-nuts hang loose.
9. Insert T-nuts into groove in top rail of dock.
10. Slide top support into appropriate position. Tighten screws. Pull up on tether to ensure T-nuts are engaged in slot in rail. If not, check to see if T-Nuts are intalled properly on tethers.



11. Place work surface assembly onto tether in proper location, with back edge of surface aligned with back edge of tether.
13. Using tethers as template, drill 5 pilot holes per tether. Be careful not to drill through top.
14. Attach work surface to supports with 5 flat head screws (J) per support.

HermanMiller

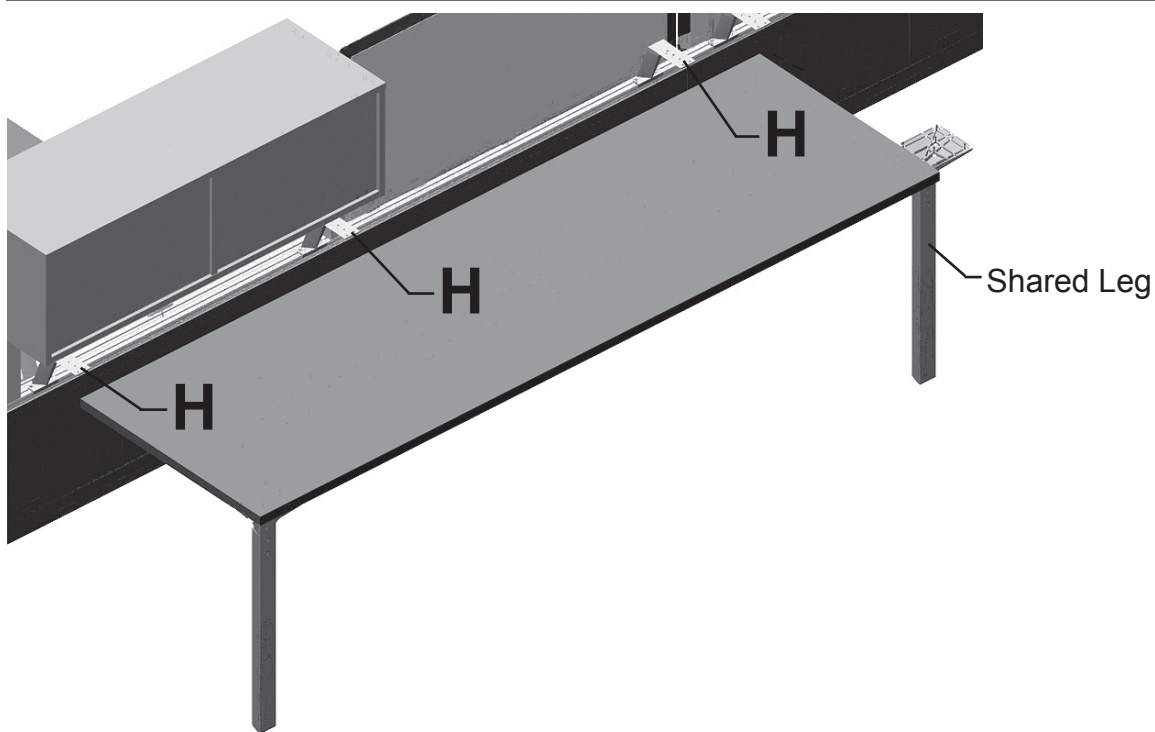
© 2015 Herman Miller, Inc. Zeeland, Michigan. Printed in the U.S.A.

Part no. 1BDWNJ rev B.

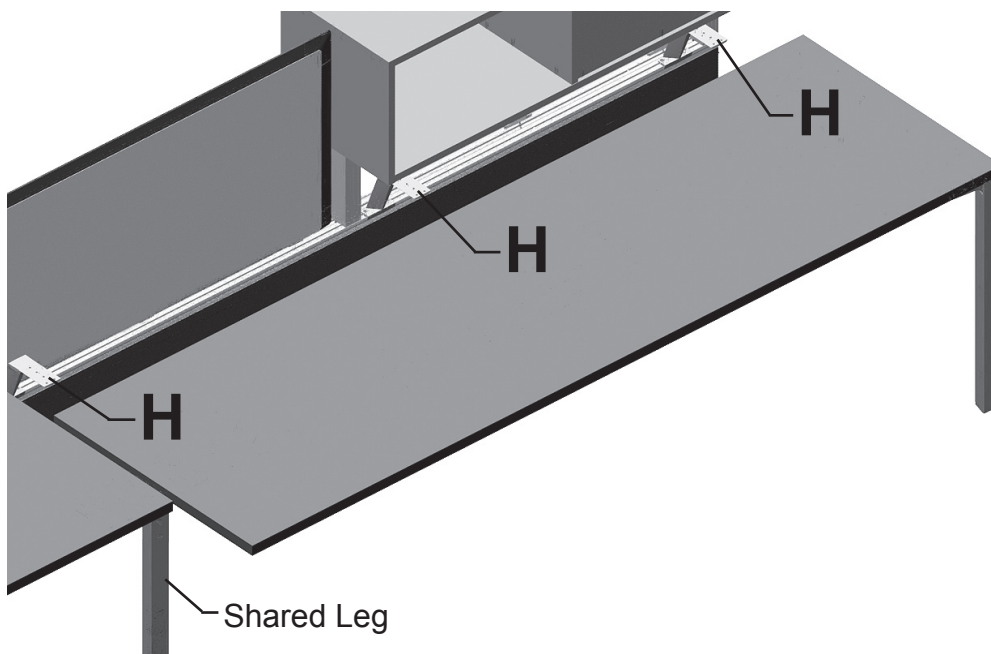
™, ®, HermanMiller, Canvas Office Landscape are among the trademarks of Herman Miller, Inc.

Illustrations and specifications are based on the latest product information available at the time of publication.

The right is reserved to make changes in design and specifications at any time, without notice, and also to discontinue products.



15. For parallel mounted work surface, mount surface assembly with Shared Leg first. Follow steps 7 through 14. Also add a third Dock to Surface Tether (H), for surfaces greater than 48", as close to center of top as possible.



16. Install next work surface as described above.
17. Attach Shared Leg to work surface with 5 flat head tapping screws (E).

HermanMiller

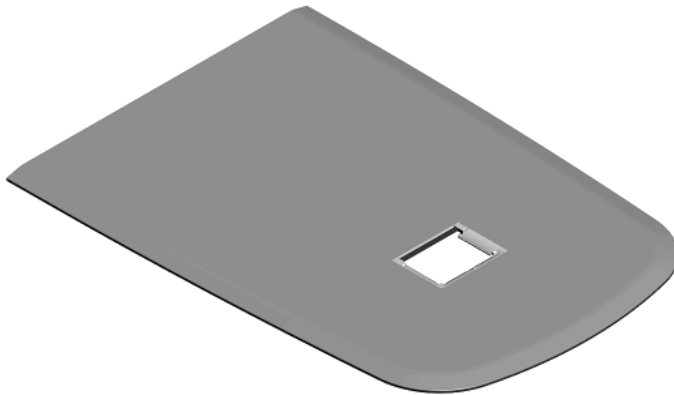
© 2015 Herman Miller, Inc. Zeeland, Michigan. Printed in the U.S.A.

Part no. 1BDWNJ rev B.

TM  Herman Miller, Canvas Office Landscape are among the trademarks of Herman Miller, Inc.

Illustrations and specifications are based on the latest product information available at the time of publication.
The right is reserved to make changes in design and specifications at any time, without notice, and also to discontinue products.

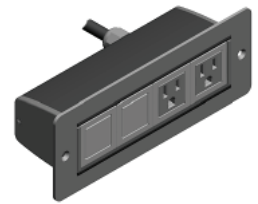
Parts Included For Peninsula:



A Work Surface
(FDS60)
(FDT60)
(FDE60)



B Flipper Door



D Power Tap



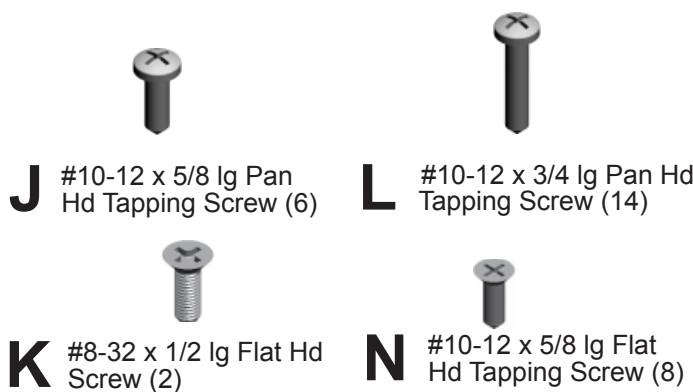
C Bottom Pan



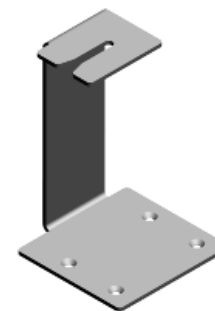
E Grommet (2)



F Rubber Pad



Hardware Pack



H Tether Bracket(2)



G Wire Trough

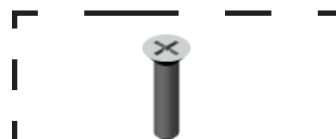


M Thumb Screw(2)

(FD600)



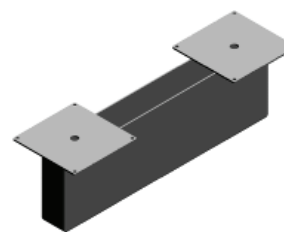
P Dock to Surface Tether



R 10-12 x 7/8 Flat Hd Tapping Screw (5)

Hardware Pack

(FD290)



S Surface Support



L #10-12 x 3/4 lg Pan Hd Tapping Screw (8)

(FT298_M)

HermanMiller

© 2015 Herman Miller, Inc. Zeeland, Michigan. Printed in the U.S.A.

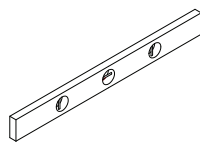
Part no. 1BDWNJ rev B.

™, ®, Herman Miller, Canvas Office Landscape are among the trademarks of Herman Miller, Inc.

Illustrations and specifications are based on the latest product information available at the time of publication.

The right is reserved to make changes in design and specifications at any time, without notice, and also to discontinue products.

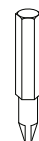
Tools Required:



Level



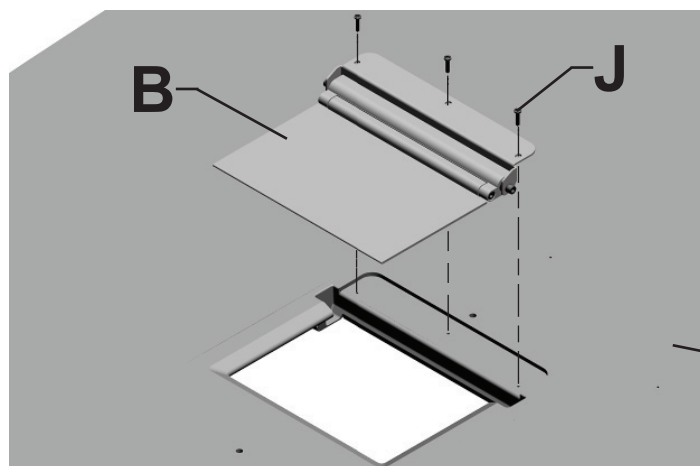
Power Driver



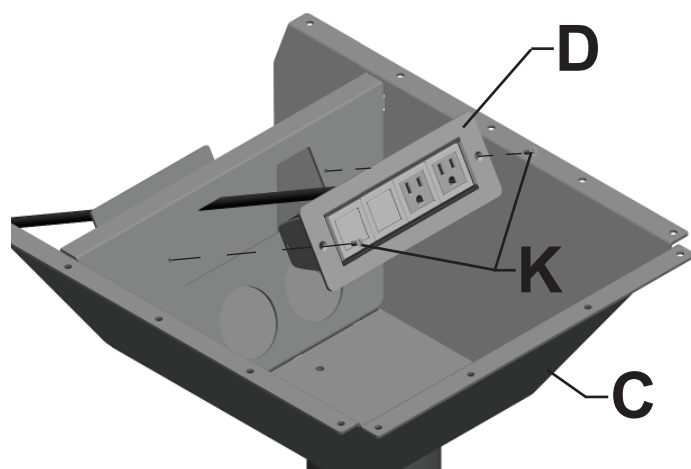
#2 Phillips Bit



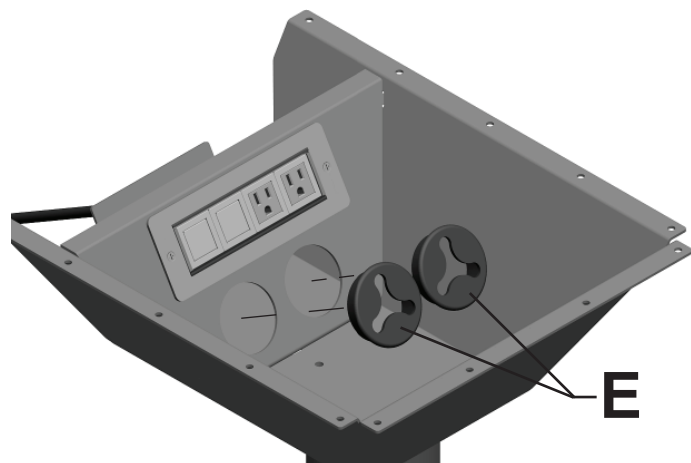
1/8" Drill Bit



1. Place Peninsula Work Surface (A) upside down on a clean padded surface.
2. Position Flipper Door (B) into opening in work surface.
3. Install 3 pan head screws (J).



4. Insert Power Tap (D) into cutout in Bottom Pan (C).
5. Install 2 flat head screws (K).



6. Press 2 grommets (E) into openings in Bottom Pan.

HermanMiller

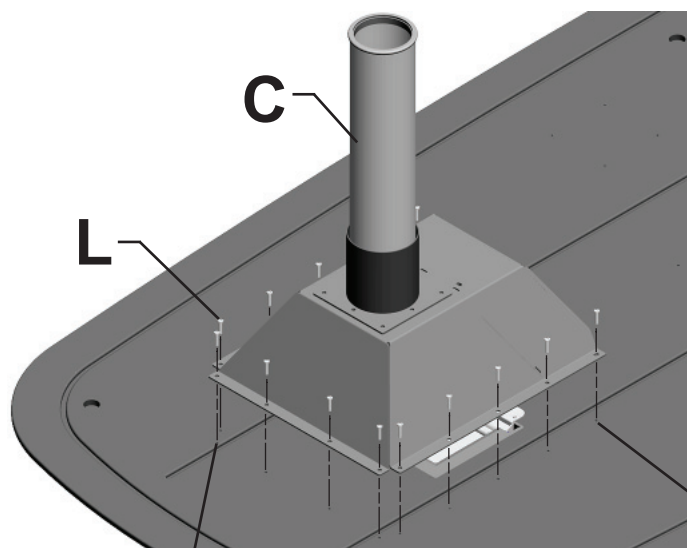
© 2015 Herman Miller, Inc. Zeeland, Michigan. Printed in the U.S.A.

Part no. 1BDWNJ rev B.

™, ®, Herman Miller, Canvas Office Landscape are among the trademarks of Herman Miller, Inc.

Illustrations and specifications are based on the latest product information available at the time of publication.

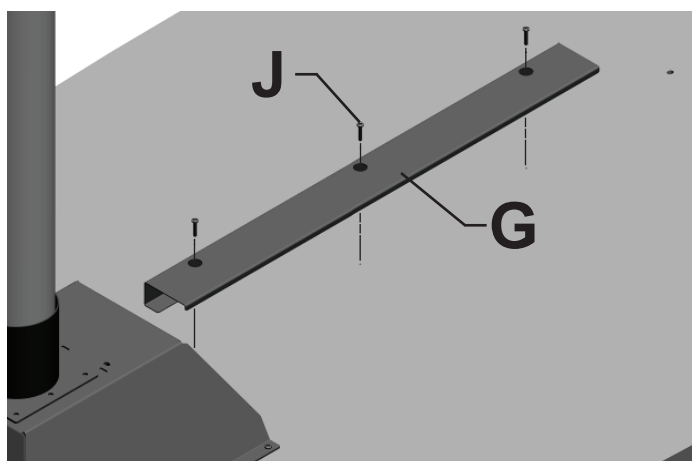
The right is reserved to make changes in design and specifications at any time, without notice, and also to discontinue products.



7. Place Bottom Pan (C) over opening in work surface.
8. Align pilot holes in work surface with holes in Bottom Pan.
9. Install 14 pan head screws (L).

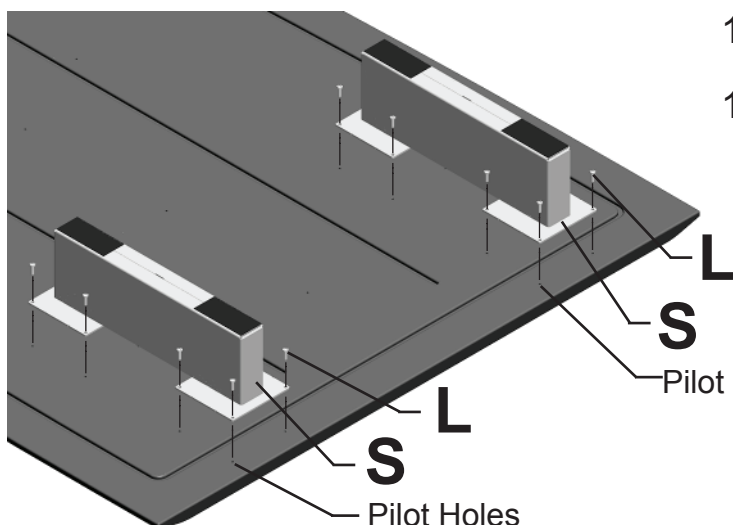
Pilot Holes

Pilot Holes



10. Position Wire Trough (G) over pilot holes in work surface.
11. Install 3 pan head screws (J).

Storage Mounted Peninsula:



12. Position two Surface Supports (S) over Pilot holes in work surface.
13. Install using pan head screws (L) provided with Surface Support.

Pilot Holes

Pilot Holes

HermanMiller

© 2015 Herman Miller, Inc. Zeeland, Michigan. Printed in the U.S.A.

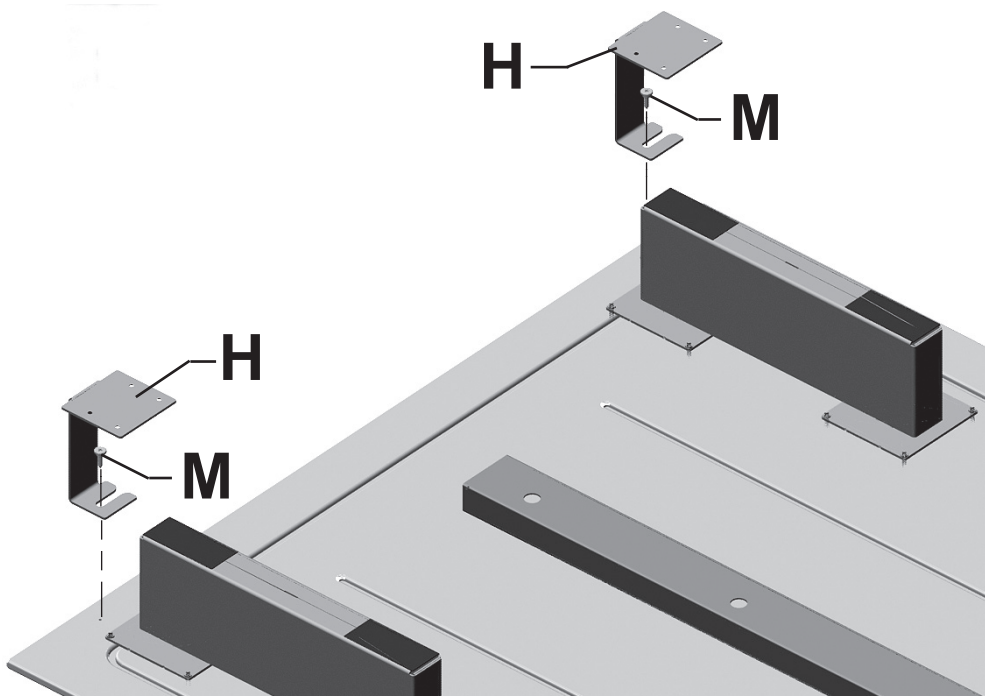
Part no. 1BDWNJ rev B.

™, ®, Herman Miller, Canvas Office Landscape are among the trademarks of Herman Miller, Inc.

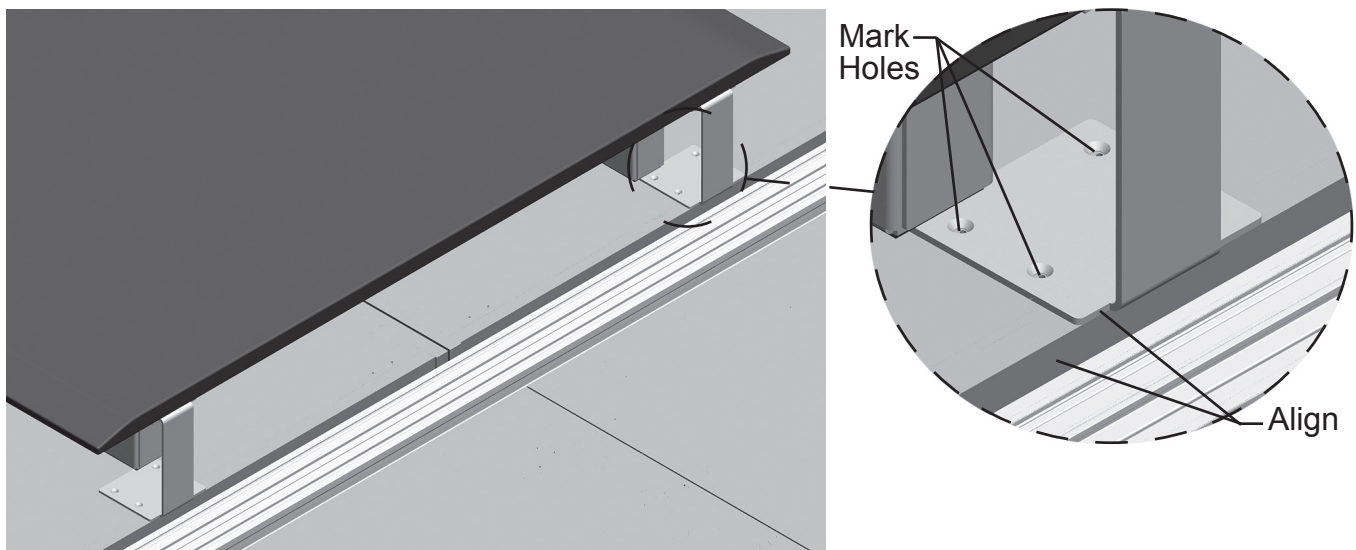
Illustrations and specifications are based on the latest product information available at the time of publication.

The right is reserved to make changes in design and specifications at any time, without notice, and also to discontinue products.

14. Remove tops from credenzas where peninsula is to be installed.



15. Assemble Tether Brackets (H) to Peninsula Surface with Shoulder Screws (M).



16. Place peninsula upright and position onto credenza.

17. Align back edge of Tether Brackets with back of credenzas.

18. Mark hole location on credenzas.

19. Remove peninsula from credenzas.

20. Remove Tether Bracket from peninsula.

21. Drill 1/8" diameter pilot holes in credenzas.

HermanMiller

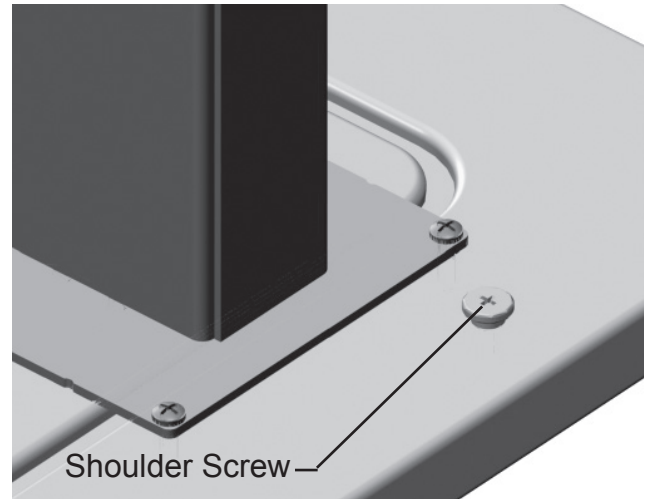
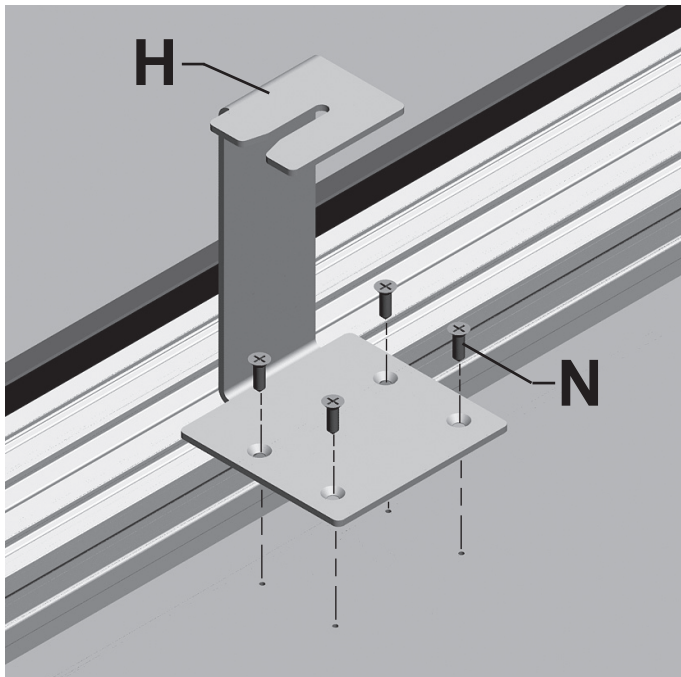
© 2015 Herman Miller, Inc. Zeeland, Michigan. Printed in the U.S.A.

Part no. 1BDWNJ rev B.

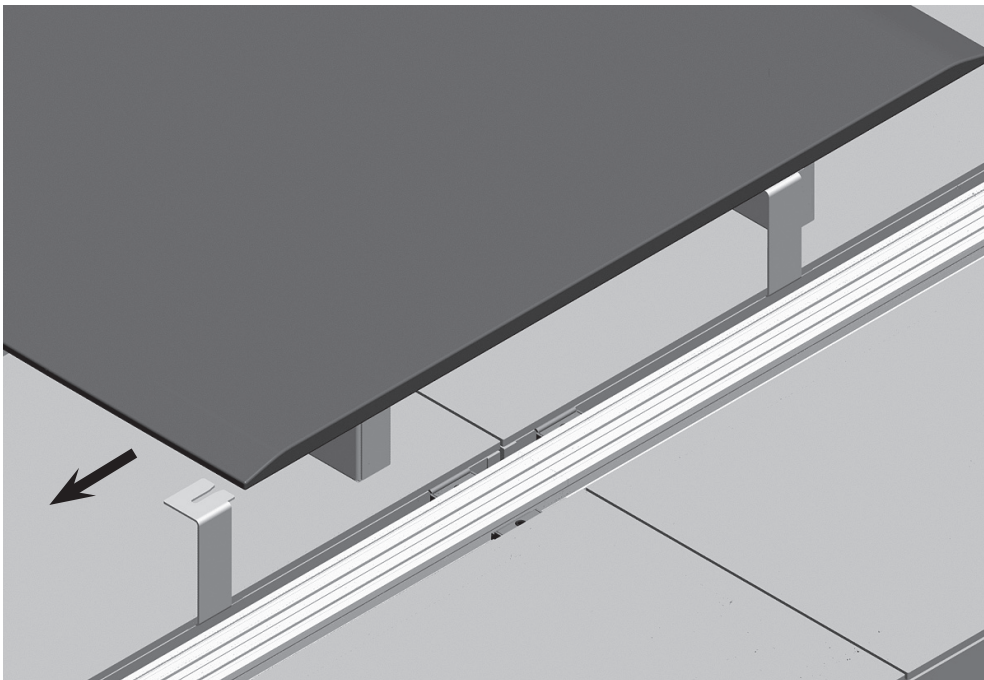
™, ®, HermanMiller, Canvas Office Landscape are among the trademarks of Herman Miller, Inc.

Illustrations and specifications are based on the latest product information available at the time of publication.

The right is reserved to make changes in design and specifications at any time, without notice, and also to discontinue products.



22. Attach Tether Bracket (H) to credenza with flat head tapping screws (N).
23. Keep Shoulder Screws loose in peninsula surface.



24. Return tops to credenzas.
25. Place peninsula surface onto credenzas. Slide surface over to engage tether brackets with shoulder screws. (Sheet of paper under stanchion pad makes top easier to slide.) Tighten shoulder screws.

HermanMiller

© 2015 Herman Miller, Inc. Zeeland, Michigan. Printed in the U.S.A.

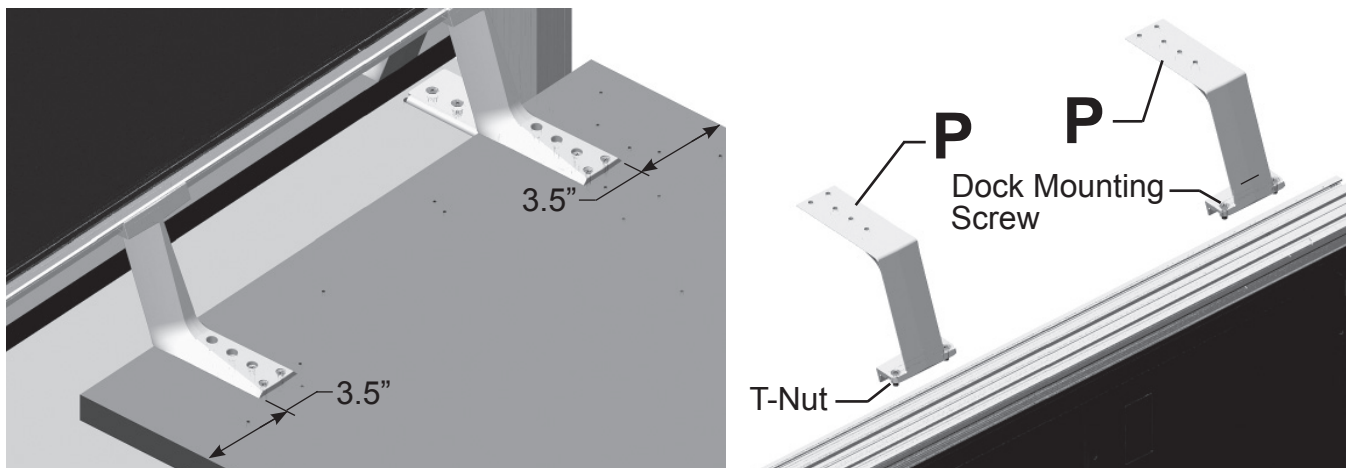
Part no. 1BDWNJ rev B.

™, ®, Herman Miller, Canvas Office Landscape are among the trademarks of Herman Miller, Inc.

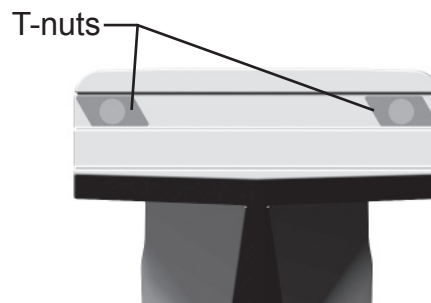
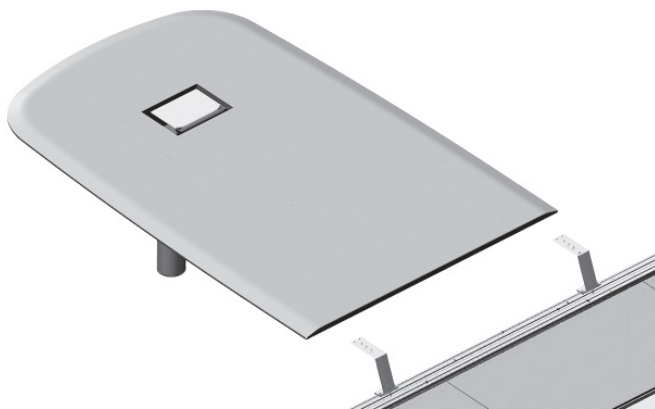
Illustrations and specifications are based on the latest product information available at the time of publication.

The right is reserved to make changes in design and specifications at any time, without notice, and also to discontinue products.

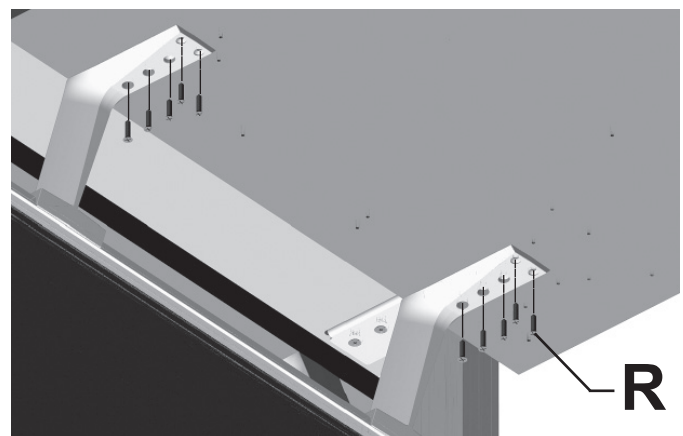
Dock Mounted Peninsula:



12. Determine where work surface is to be installed. Dock to Surface Tethers are to be mounted 3 1/2" in from edge of work surface.
13. Back out dock mounting screws in Dock to Surface Tethers (P) until T-nuts hang loose.
14. Insert T-nuts into groove in top rail of dock.
15. Slide top support into appropriate position. Tighten screws. Pull up on tether to ensure T-nuts are engaged in slot in rail. If not, check to see if T-Nuts are intalled properly on tethers.



16. Place work surface assembly onto tether in proper location, with back edge of surface aligned with back edge of tether.
17. Using tethers as template, drill 5 pilot holes per tether. Be careful not to drill through top.
18. Attach work surface to supports with 5 flat head screws (R) per support.



HermanMiller

© 2015 Herman Miller, Inc. Zeeland, Michigan. Printed in the U.S.A.

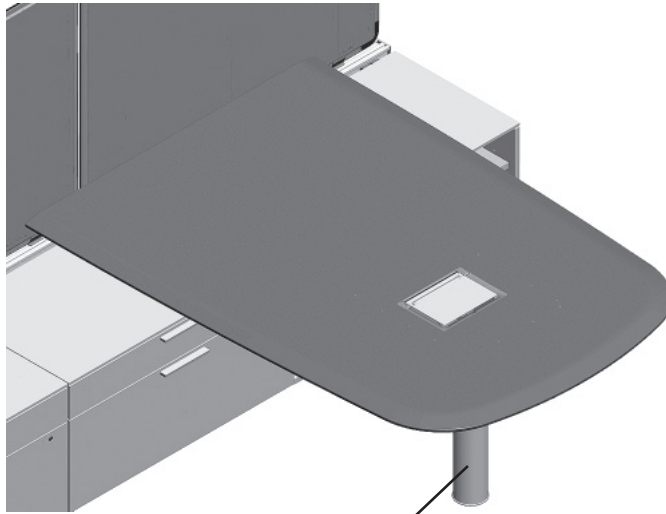
Part no. 1BDWNJ rev B.

™, ®, Herman Miller, Canvas Office Landscape are among the trademarks of Herman Miller, Inc.

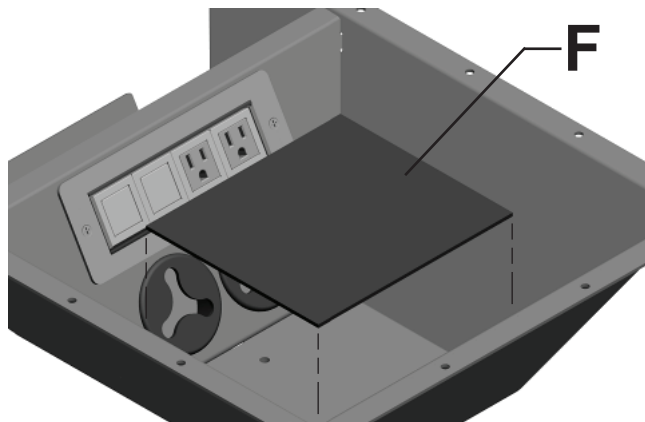
Illustrations and specifications are based on the latest product information available at the time of publication.

The right is reserved to make changes in design and specifications at any time, without notice, and also to discontinue products.

Both Mounted Peninsulas:



26. Level work surface by rotating leg in or out to adjust.




27. Place Rubber Pad (F) onto the floor of the Bottom Pan. (Note: Work Surface not shown for clarity.)

HermanMiller

© 2015 Herman Miller, Inc. Zeeland, Michigan. Printed in the U.S.A.

Part no. 1BDWNJ rev B.

™  Herman Miller, Canvas Office Landscape are among the trademarks of Herman Miller, Inc.

Illustrations and specifications are based on the latest product information available at the time of publication.
The right is reserved to make changes in design and specifications at any time, without notice, and also to discontinue products.

Disassembly for Recycling:

Materials Identification and Segregation:

Where possible, plastic components are marked with ASTM recycling codes. Use these codes to identify material type for recycling. Non-marked components should be treated as mixed plastic. Ferrous metals can be identified using a small magnet for recycling. Non-ferrous metals should be separated and recycled separately.

To disassemble product, reverse the above installation steps.