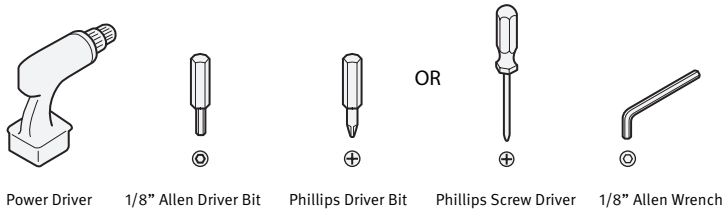


HermanMiller Ode™ Floor Lamp



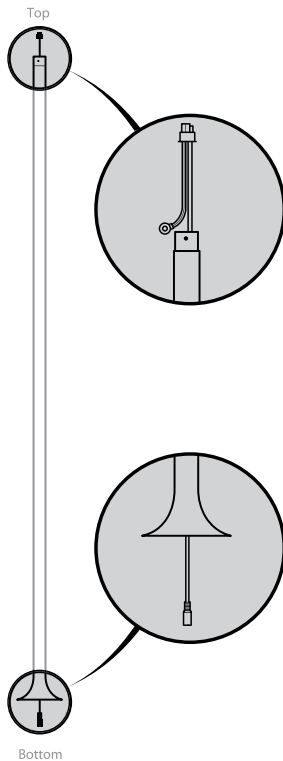
How to assemble your floor lamp.

Tools Required

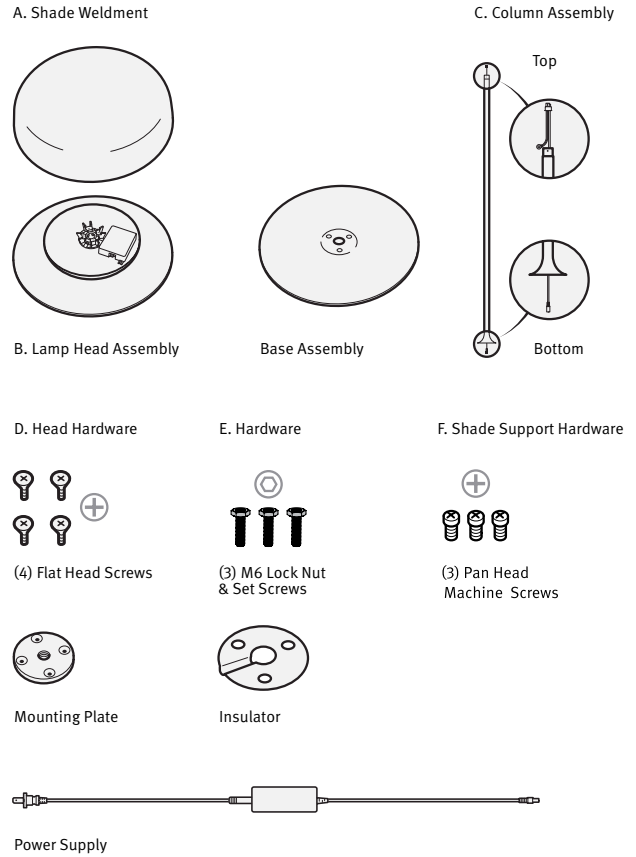


Step 1

Remove rubber band from column to free wire end from top of column.

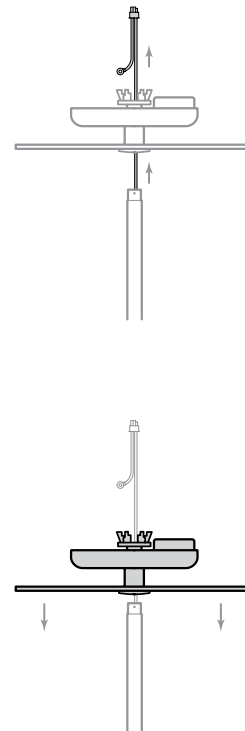


Parts Included



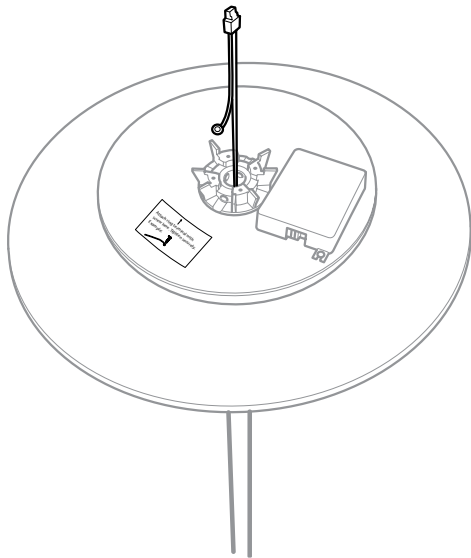
Step 2

Feed wire end through lamp head assembly.



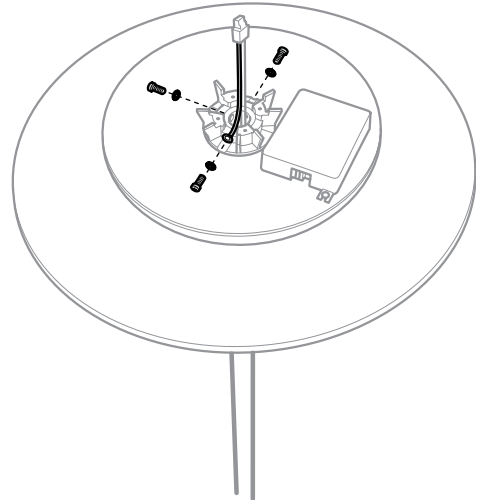
Step 3

Set lamp head assembly into place on top of the column.



Step 4

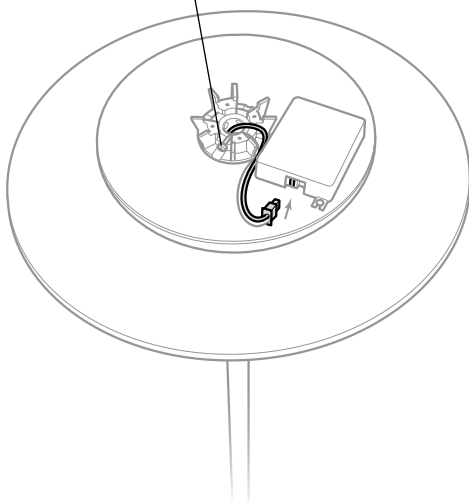
Install three pan head machine screws around the shade support. The ring terminal on the wire must be installed on one of these machine screws with internal tooth lock washer before it is installed the screw with ring terminal must be securely tightend to ensure conductivity to the post.



Step 5

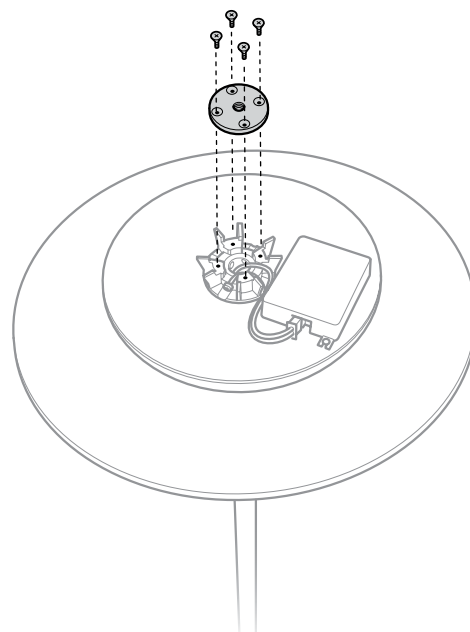
Plug the wire connector into the side of PCB driver board.

The screw with ring terminal must be securely tightend to ensure touch sense conductivity.



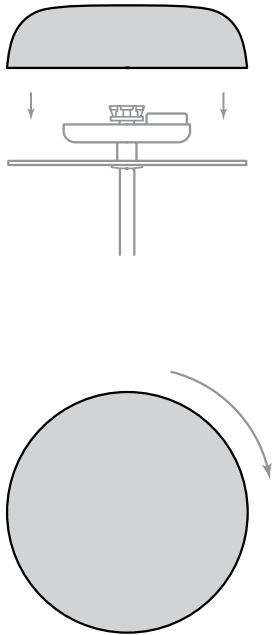
Step 6

Screw the shade mounting plate into the lamp head assembly using four flat head screws. Make sure that the wire is underneath of this plate.



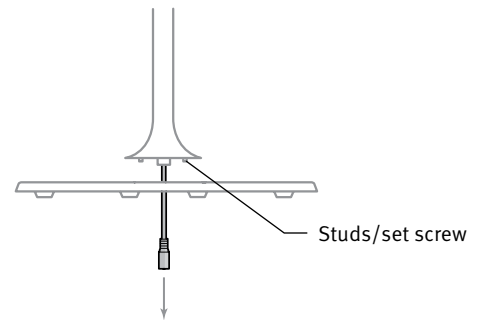
Step 7

Twist the shade weldment onto the mounting plate.



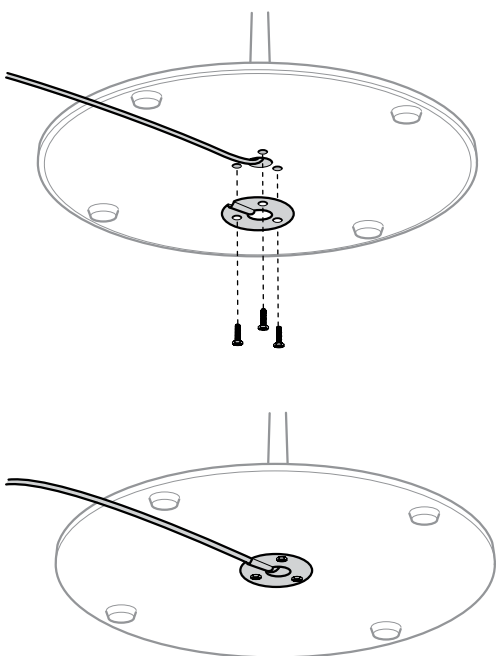
Step 8

Feed wire through central hole of base assembly.



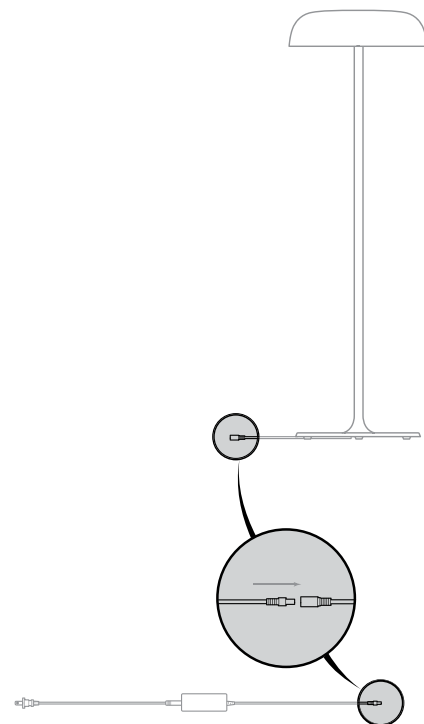
Step 9

Attach base assembly using three Allen head screws. Make sure that the insulator is installed between the base assembly and the screws.



Step 10

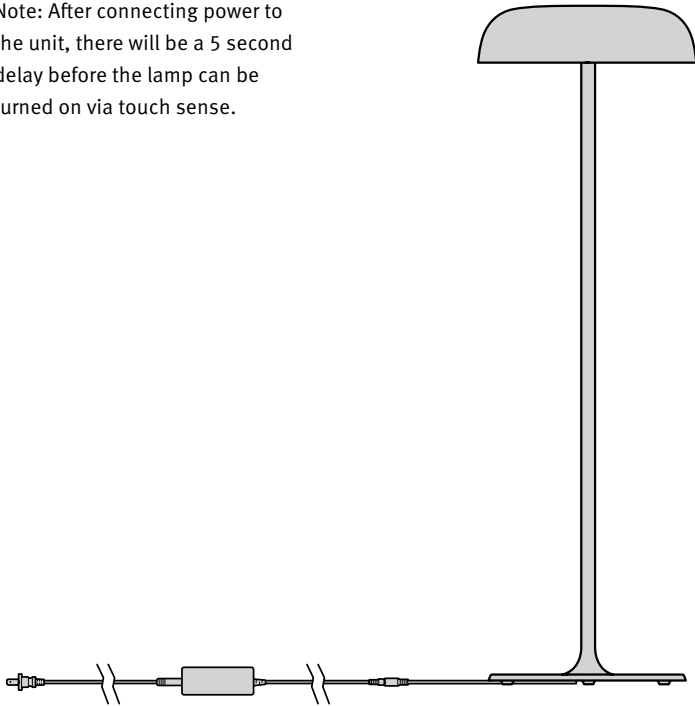
Connect power supply cord to floor lamp.



Step 11

Place lamp on desired floor location, making sure power supply and cord are properly routed. Plug power supply into a standard electrical outlet.

Note: After connecting power to the unit, there will be a 5 second delay before the lamp can be turned on via touch sense.

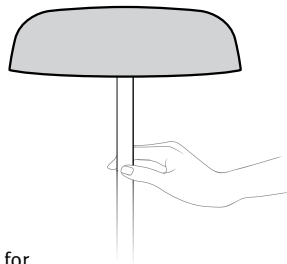


To operate lamps:

Grasp any part of the stem to turn lamps on or off.

NOTE: By design light automatically shuts off after nine hours.

For Example: The light is turned on and runs for two hours before being turned off. The light is then turned on again so now it will continue to run for an additional seven hours and then will turn off automatically.



For more information about our products and services please visit us at hermanmiller.com or call (800) 851 1196.

©2019 Herman Miller, Inc., Zeeland, Michigan Printed in U.S.A. Part No. 1BGH00
© and Herman Miller are among the registered trademarks of Herman Miller, Inc.
™ Ode is among the trademarks of Herman Miller, Inc.