

# HermanMiller

## Canvas™ Metal Desking System Peninsula Installation and Disassembly for Recycling Instructions



### How to assemble your Peninsula.

#### Tools Required



Power Driver



Phillips Bit



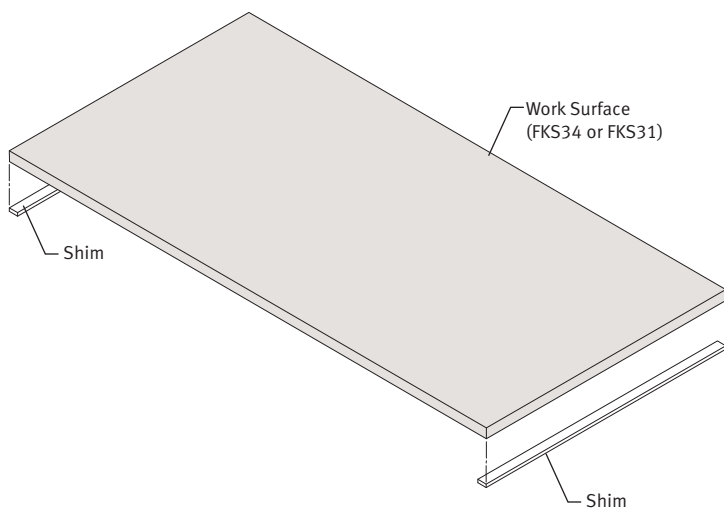
1/8" Drill Bit



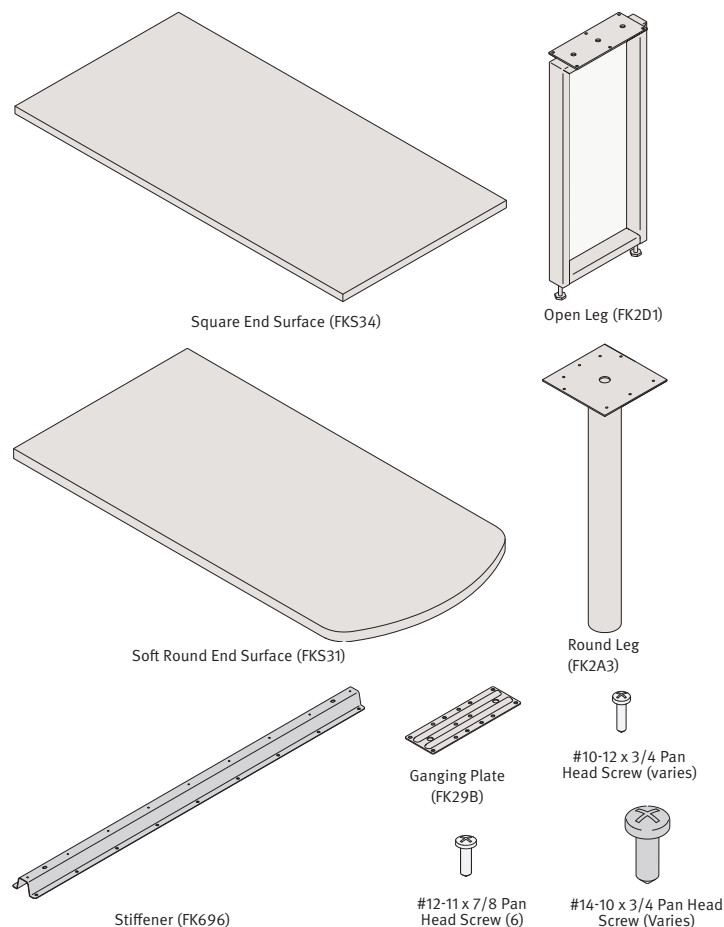
Safety Glass

#### Step 1

- 1.1 Place protective barrier (blanket, ect.) on floor surface.
- 1.2 Place (2) shims on floor. shims should be between 1/8" and 1/2" thick, approximately 1" wide.
- 1.3 Place worksurface face down onto shims. Shims should be flush with outside edge of worksurface.



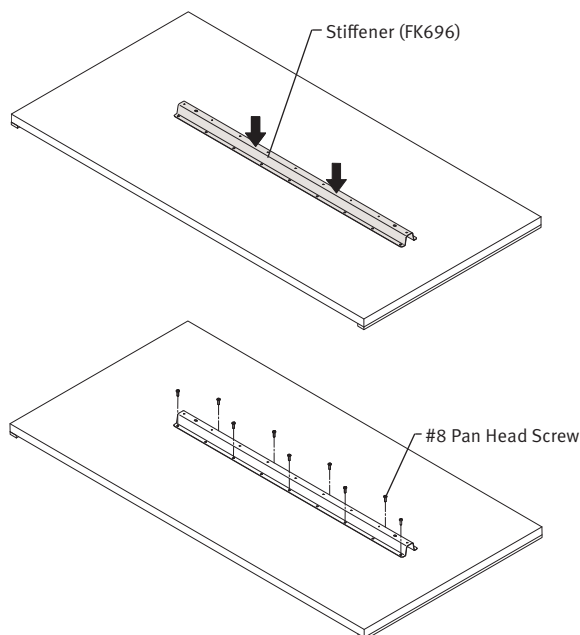
#### Parts Included



1.4 Place worksurface stiffener at center of worksurface. Location may differ depending on specific application (under worksurface storage, ect.).

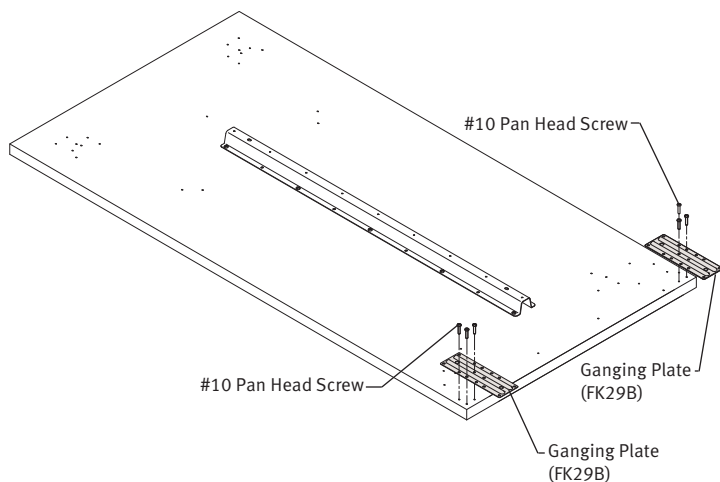
1.5 While applying downward force to worksurface (by standing on stiffener on backside of worksurface to create opposing bow) predrill worksurface through stiffener hole locations. Note: Pilot hole size if 3/32". Standard screw is #8 x 7/8 long.

1.6 While maintaining downward force, insert screws. Start from center, work outward, alternation sides. Install screws in all available holes in stiffener.



## Step 2

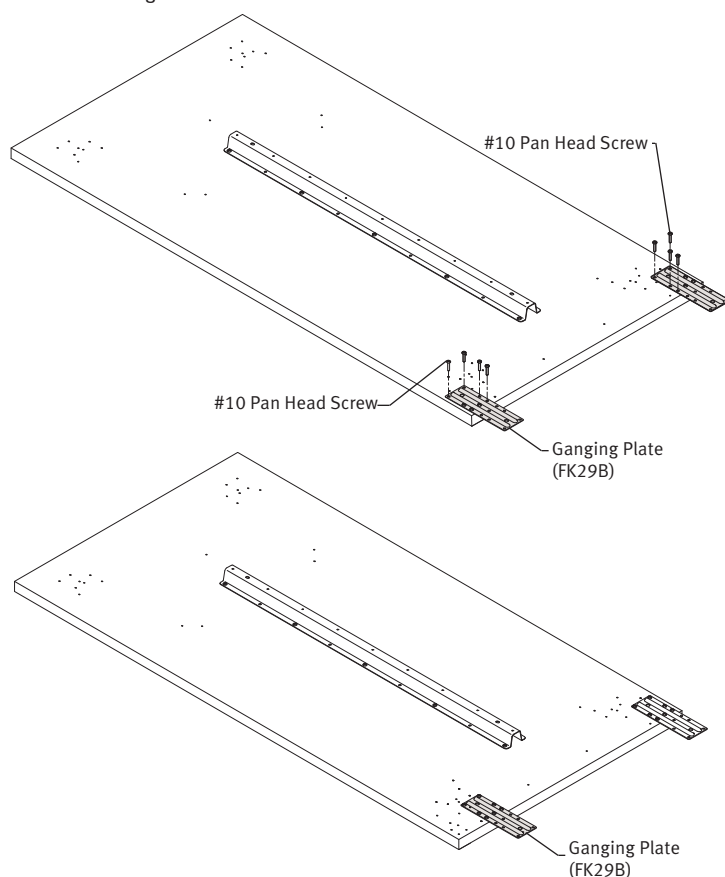
- 2.1 Align 3 pilot holes in surface with 3 holes in Ganging Plate.
- 2.2 Secure plate to surface with (3) #10 pan head screws.
- 2.3 Repeat for other Ganging Plate.



2.4 Using brackets as template, drill remaining pilot holes.

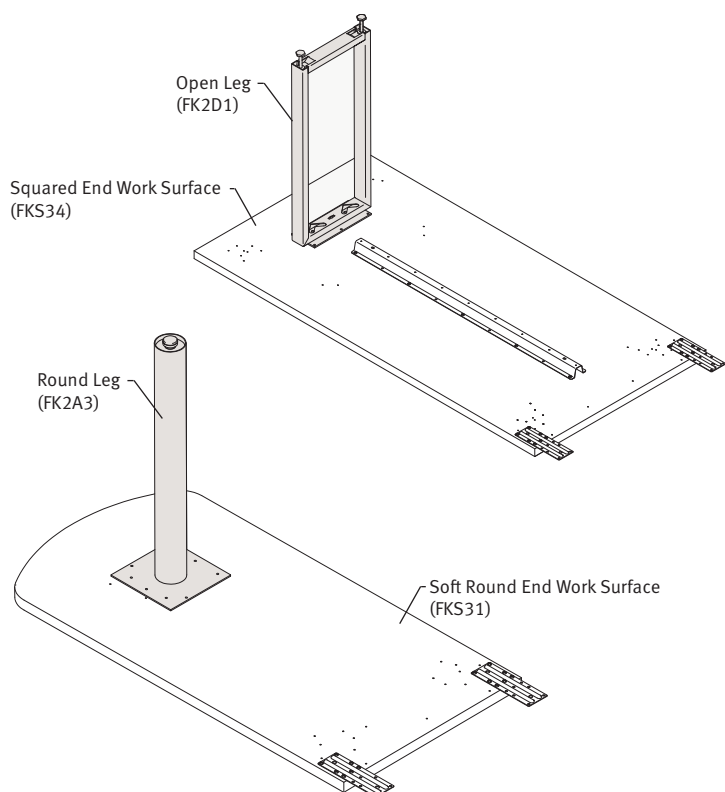
2.5 Install remaining pan head screws.

Note: If installing surface at end of desk, install end bracket over to allow for clearance of leg bracket.



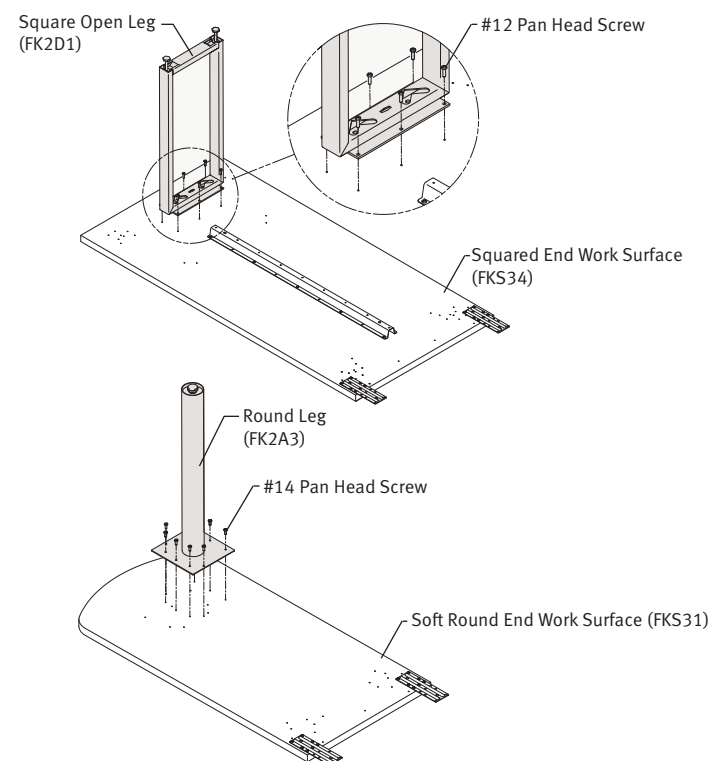
## Step 3

- 3.1 Position Leg onto surface. Mark Holes.



## Step 4

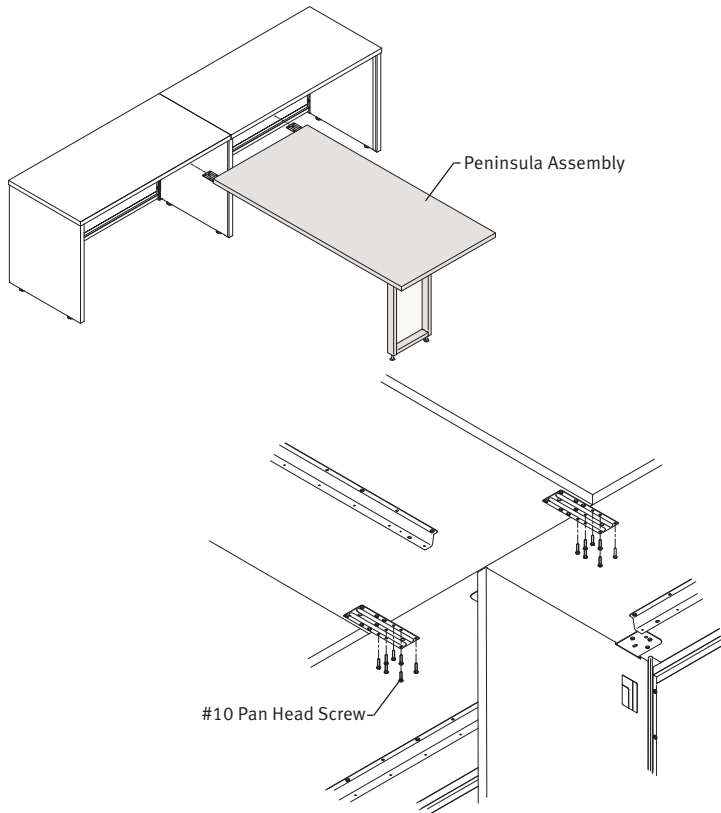
- 4.1 Remove Leg. Drill pilot holes.
- 4.2 Attach leg to surface with Pan Head Screws.



### Step 5 - Middle

5.1 Position Peninsula Assembly up to work surface(s) in a location free from leg mousing brackets.

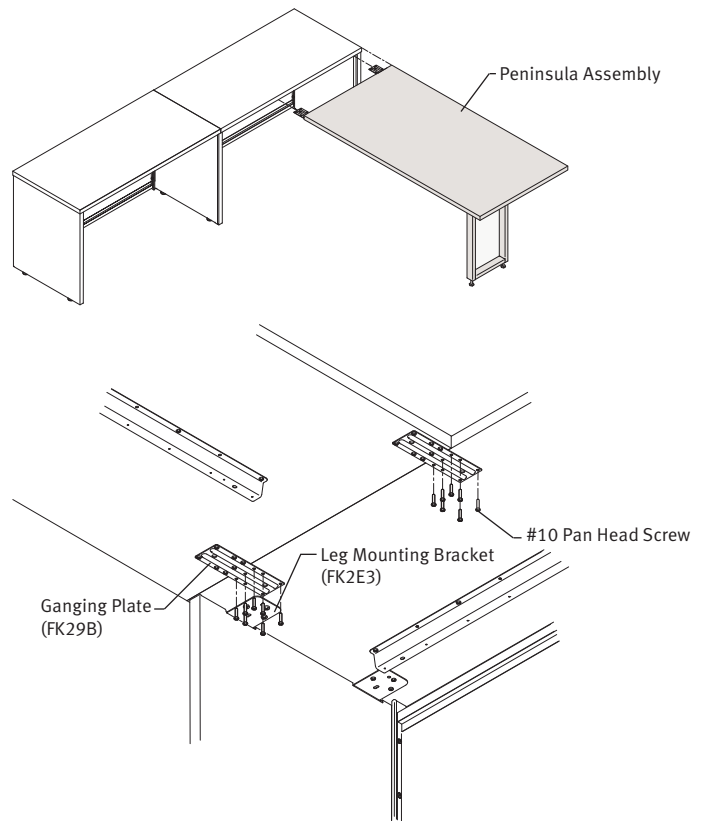
5.2 Attach Mounting Brackets to surface with (6) #10 Pan Head Screws per bracket.



### Step 5 - End

5.1 Position Peninsula Assembly up to end of work surface. Make sure Ganging Plate does not interfere with leg mousing brackets.

5.2 Attach Mounting Brackets to surface with (6) #10 Pan Head Screws per bracket.



### Disassembly and Recycling:

#### Materials Identification and Segregation:

Where possible, plastic components are marked with ASTM recycling codes. Use these codes to identify material type for recycling. Non marked components should be treated as mixed plastic. Ferrous metals can be identified using a small magnet for recycling. Non-ferrous metals should be separated and recycled separately.

To disassemble product, reverse the above installation steps.